

ITIH4 Antibody (C-Term)
Purified Rabbit Polyclonal Antibody (Pab)
Catalog # AP22075b**Specification**

ITIH4 Antibody (C-Term) - Product Information

| | |
|-------------------|------------------------|
| Application | IF, WB, FC,E |
| Primary Accession | Q14624 |
| Reactivity | Human |
| Host | Rabbit |
| Clonality | polyclonal |
| Isotype | Rabbit IgG |
| Calculated MW | 103357 |

ITIH4 Antibody (C-Term) - Additional Information**Gene ID** 3700**Other Names**

Inter-alpha-trypsin inhibitor heavy chain H4, ITI heavy chain H4, ITI-HC4, Inter-alpha-inhibitor heavy chain 4, Inter-alpha-trypsin inhibitor family heavy chain-related protein, IHRP, Plasma kallikrein sensitive glycoprotein 120, Gp120, PK-120, 70 kDa inter-alpha-trypsin inhibitor heavy chain H4, 35 kDa inter-alpha-trypsin inhibitor heavy chain H4, ITIH4, IHRP, ITIHL1, PK120

Target/Specificity

This ITIH4 antibody is generated from a rabbit immunized with a KLH conjugated synthetic peptide between 784-816 amino acids from human ITIH4.

Dilution

IF~~1:25

WB~~1:2000

FC~~1:25

Format

Purified polyclonal antibody supplied in PBS with 0.09% (W/V) sodium azide. This antibody is purified through a protein A column, followed by peptide affinity purification.

Storage

Maintain refrigerated at 2-8°C for up to 2 weeks. For long term storage store at -20°C in small aliquots to prevent freeze-thaw cycles.

Precautions

ITIH4 Antibody (C-Term) is for research use only and not for use in diagnostic or therapeutic procedures.

ITIH4 Antibody (C-Term) - Protein Information**Name** ITIH4

Synonyms IHRP, ITIHL1, PK120

Function Type II acute-phase protein (APP) involved in inflammatory responses to trauma. May also play a role in liver development or regeneration.

Cellular Location

Secreted.

Tissue Location

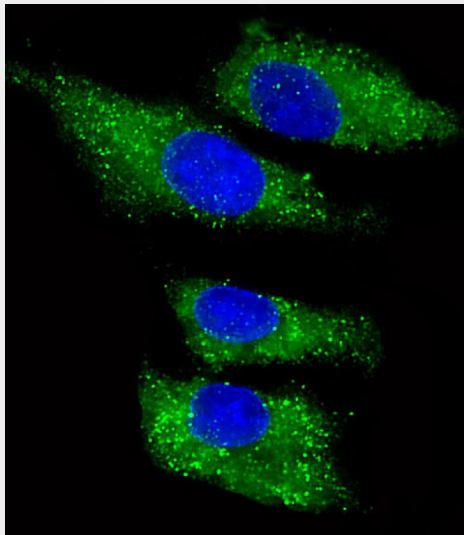
Liver specific.

ITIH4 Antibody (C-Term) - Protocols

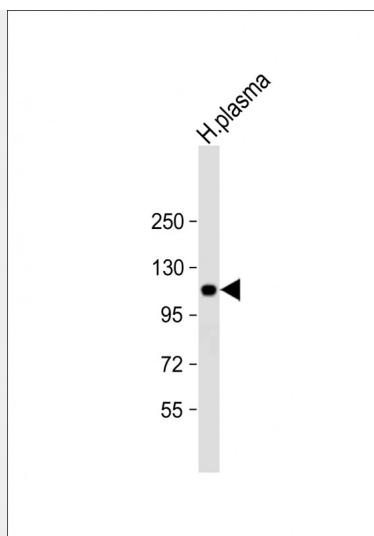
Provided below are standard protocols that you may find useful for product applications.

- [Western Blot](#)
- [Blocking Peptides](#)
- [Dot Blot](#)
- [Immunohistochemistry](#)
- [Immunofluorescence](#)
- [Immunoprecipitation](#)
- [Flow Cytometry](#)
- [Cell Culture](#)

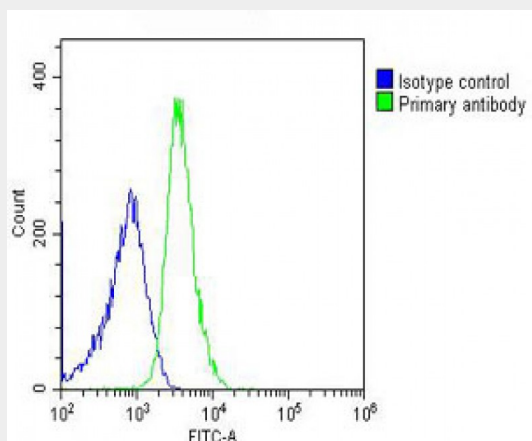
ITIH4 Antibody (C-Term) - Images



Immunofluorescent analysis of 4% paraformaldehyde-fixed, 0.1% Triton X-100 permeabilized HepG2 (human liver hepatocellular carcinoma cell line) cells labeling ITIH4 with AP22075b at 1/25 dilution, followed by Dylight® 488-conjugated goat anti-rabbit IgG (NK179883) secondary antibody at 1/200 dilution (green). Immunofluorescence image showing cytoplasm staining on HepG2 cell line. The nuclear counter stain is DAPI (blue).



Anti-ITIH4 Antibody (C-Term) at 1:2000 dilution + human plasma lysate Lysates/proteins at 20 μ g per lane. Secondary Goat Anti-Rabbit IgG, (H+L), Peroxidase conjugated at 1/10000 dilution. Predicted band size : 103 kDa Blocking/Dilution buffer: 5% NFDM/TBST.



Overlay histogram showing U-2OS cells stained with AP22075b (green line). The cells were fixed with 2% paraformaldehyde (10 min) and then permeabilized with 90% methanol for 10 min. The cells were then incubated in 2% bovine serum albumin to block non-specific protein-protein interactions followed by the antibody (AP22075b, 1:25 dilution) for 60 min at 37°C. The secondary antibody used was Goat-Anti-Rabbit IgG, DyLight® 488 Conjugated Highly Cross-Adsorbed(OH191631) at 1/200 dilution for 40 min at 37°C. Isotype control antibody (blue line) was rabbit IgG (1 μ g/1x10⁶ cells) used under the same conditions. Acquisition of >10, 000 events was performed.

ITIH4 Antibody (C-Term) - Background

Type II acute-phase protein (APP) involved in inflammatory responses to trauma. May also play a role in liver development or regeneration.

ITIH4 Antibody (C-Term) - References

- Nishimura H.,et al.FEBS Lett. 357:207-211(1995).
- Saguchi K.,et al.J. Biochem. 117:14-18(1995).
- Saguchi K.,et al.J. Biochem. 119:898-905(1996).
- Ota T.,et al.Nat. Genet. 36:40-45(2004).
- Kroczyńska B.,et al.Biochem. Biophys. Res. Commun. 338:1467-1477(2005).

