

**ARHGEF7 Antibody (C-Term)**  
**Purified Rabbit Polyclonal Antibody (Pab)**  
**Catalog # AP22153b****Specification**

---

**ARHGEF7 Antibody (C-Term) - Product Information**

Application	WB,E
Primary Accession	<a href="#">Q14155</a>
Other Accession	<a href="#">Q9ES28</a>
Reactivity	Human, Mouse
Predicted	Mouse
Host	Rabbit
Clonality	polyclonal
Isotype	Rabbit IgG
Calculated MW	90012

**ARHGEF7 Antibody (C-Term) - Additional Information****Gene ID** 8874**Other Names**

Rho guanine nucleotide exchange factor 7, Beta-Pix, COOL-1, PAK-interacting exchange factor beta, p85, ARHGEF7, COOL1, KIAA0142, P85SPR, PAK3BP, PIXB

**Target/Specificity**

This ARHGEF7 antibody is generated from a rabbit immunized with a KLH conjugated synthetic peptide between 654-688 amino acids from human ARHGEF7.

**Dilution**

WB~~1:2000

**Format**

Purified polyclonal antibody supplied in PBS with 0.09% (W/V) sodium azide. This antibody is purified through a protein A column, followed by peptide affinity purification.

**Storage**

Maintain refrigerated at 2-8°C for up to 2 weeks. For long term storage store at -20°C in small aliquots to prevent freeze-thaw cycles.

**Precautions**

ARHGEF7 Antibody (C-Term) is for research use only and not for use in diagnostic or therapeutic procedures.

**ARHGEF7 Antibody (C-Term) - Protein Information****Name** ARHGEF7**Synonyms** COOL1, KIAA0142, P85SPR, PAK3BP, PIXB

**Function** Acts as a RAC1 guanine nucleotide exchange factor (GEF) and can induce membrane ruffling. Functions in cell migration, attachment and cell spreading. Promotes targeting of RAC1 to focal adhesions (By similarity). May function as a positive regulator of apoptosis. Downstream of NMDA receptors and CaMKK-CaMK1 signaling cascade, promotes the formation of spines and synapses in hippocampal neurons.

#### Cellular Location

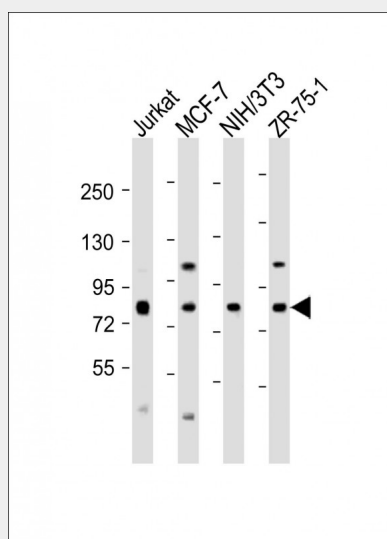
Cell junction, focal adhesion. Cell projection, ruffle. Cytoplasm, cell cortex Cell projection, lamellipodium. Note=Detected at cell adhesions. A small proportion is detected at focal adhesions

### ARHGEF7 Antibody (C-Term) - Protocols

Provided below are standard protocols that you may find useful for product applications.

- [Western Blot](#)
- [Blocking Peptides](#)
- [Dot Blot](#)
- [Immunohistochemistry](#)
- [Immunofluorescence](#)
- [Immunoprecipitation](#)
- [Flow Cytometry](#)
- [Cell Culture](#)

### ARHGEF7 Antibody (C-Term) - Images



All lanes : Anti-ARHGEF7 Antibody (C-Term) at 1:2000 dilution Lane 1: Jurkat whole cell lysate Lane 2: MCF-7 whole cell lysate Lane 3: NIH/3T3 whole cell lysate Lane 4: ZR-75-1 whole cell lysate Lysates/proteins at 20 µg per lane. Secondary Goat Anti-Rabbit IgG, (H+L), Peroxidase conjugated at 1/10000 dilution. Predicted band size : 90 kDa Blocking/Dilution buffer: 5% NFDM/TBST.

### ARHGEF7 Antibody (C-Term) - Background

Acts as a RAC1 guanine nucleotide exchange factor (GEF) and can induce membrane ruffling. Functions in cell migration, attachment and cell spreading. Promotes targeting of RAC1 to focal adhesions (By similarity). May function as a positive regulator of apoptosis. Downstream of NMDA receptors and CaMKK-CaMK1 signaling cascade, promotes the formation of spines and synapses in

hippocampal neurons.

#### **ARHGEF7 Antibody (C-Term) - References**

Nagase T.,et al.DNA Res. 2:167-174(1995).  
Bagrodia S.,et al.J. Biol. Chem. 273:23633-23636(1998).  
Bechtel S.,et al.BMC Genomics 8:399-399(2007).  
Dunham A.,et al.Nature 428:522-528(2004).  
Mural R.J.,et al.Submitted (JUL-2005) to the EMBL/GenBank/DDBJ databases.