

**SH3PXD2B Antibody (Center)**  
**Purified Rabbit Polyclonal Antibody (Pab)**  
**Catalog # AP22209c****Specification**

---

**SH3PXD2B Antibody (Center) - Product Information**

Application	WB,E
Primary Accession	<a href="#">A1X283</a>
Reactivity	Human
Host	Rabbit
Clonality	polyclonal
Isotype	Rabbit IgG
Calculated MW	101579
Antigen Region	505-539

**SH3PXD2B Antibody (Center) - Additional Information****Gene ID** 285590**Target/Specificity**

This SH3PXD2B antibody is generated from a rabbit immunized with a KLH conjugated synthetic peptide between 505-539 amino acids from the Central region of human SH3PXD2B.

**Dilution**

WB~~1:2000

**Format**

Purified polyclonal antibody supplied in PBS with 0.09% (W/V) sodium azide. This antibody is purified through a protein A column, followed by peptide affinity purification.

**Storage**

Maintain refrigerated at 2-8°C for up to 2 weeks. For long term storage store at -20°C in small aliquots to prevent freeze-thaw cycles.

**Precautions**

SH3PXD2B Antibody (Center) is for research use only and not for use in diagnostic or therapeutic procedures.

**SH3PXD2B Antibody (Center) - Protein Information****Name** SH3PXD2B**Synonyms** FAD49, KIAA1295, TKS4

**Function** Adapter protein involved in invadopodia and podosome formation and extracellular matrix degradation. Binds matrix metalloproteinases (ADAMs), NADPH oxidases (NOXs) and phosphoinositides. Acts as an organizer protein that allows NOX1- or NOX3-dependent reactive oxygen species (ROS) generation and ROS localization. Plays a role in mitotic clonal expansion

during the immediate early stage of adipocyte differentiation (By similarity).

**Cellular Location**

Cytoplasm. Cell projection, podosome. Note=Cytoplasmic in normal cells and localizes to podosomes in SRC-transformed cells.

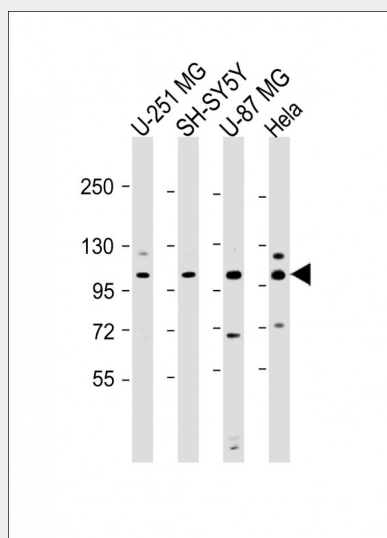
**Tissue Location**

Expressed in fibroblasts.

**SH3PXD2B Antibody (Center) - Protocols**

Provided below are standard protocols that you may find useful for product applications.

- [Western Blot](#)
- [Blocking Peptides](#)
- [Dot Blot](#)
- [Immunohistochemistry](#)
- [Immunofluorescence](#)
- [Immunoprecipitation](#)
- [Flow Cytometry](#)
- [Cell Culture](#)

**SH3PXD2B Antibody (Center) - Images**

All lanes : Anti-SH3PXD2B Antibody (Center) at 1:2000 dilution Lane 1: U-251 MG whole cell lysate Lane 2: SH-SY5Y whole cell lysate Lane 3: U-87 MG whole cell lysate Lane 4: HeLa whole cell lysate Lysates/proteins at 20 µg per lane. Secondary Goat Anti-Rabbit IgG, (H+L), Peroxidase conjugated at 1/10000 dilution. Predicted band size : 102 kDa Blocking/Dilution buffer: 5% NFDM/TBST.