

**STK25 Antibody**  
**Purified Rabbit Polyclonal Antibody (Pab)**  
**Catalog # AP22291a****Specification**

---

**STK25 Antibody - Product Information**

Application	WB,E
Primary Accession	<a href="#">O00506</a>
Reactivity	Human
Host	Rabbit
Clonality	polyclonal
Isotype	Rabbit IgG
Calculated MW	48112

**STK25 Antibody - Additional Information****Gene ID** 10494**Other Names**

Serine/threonine-protein kinase 25, 2.7.11.1, Ste20-like kinase, Sterile 20/oxidant stress-response kinase 1, SOK-1, Ste20/oxidant stress response kinase 1, STK25, SOK1, YSK1

**Target/Specificity**

This STK25 antibody is generated from a rabbit immunized with a recombinant protein of human STK25.

**Dilution**

WB~~1:2000

**Format**

Purified polyclonal antibody supplied in PBS with 0.09% (W/V) sodium azide. This antibody is purified through a protein A column, followed by peptide affinity purification.

**Storage**

Maintain refrigerated at 2-8°C for up to 2 weeks. For long term storage store at -20°C in small aliquots to prevent freeze-thaw cycles.

**Precautions**

STK25 Antibody is for research use only and not for use in diagnostic or therapeutic procedures.

**STK25 Antibody - Protein Information****Name** STK25**Synonyms** SOK1, YSK1

**Function** Oxidant stress-activated serine/threonine kinase that may play a role in the response to environmental stress. Targets to the Golgi apparatus where it appears to regulate protein

transport events, cell adhesion, and polarity complexes important for cell migration.

#### **Cellular Location**

Cytoplasm. Golgi apparatus. Note=Localizes to the Golgi apparatus

#### **Tissue Location**

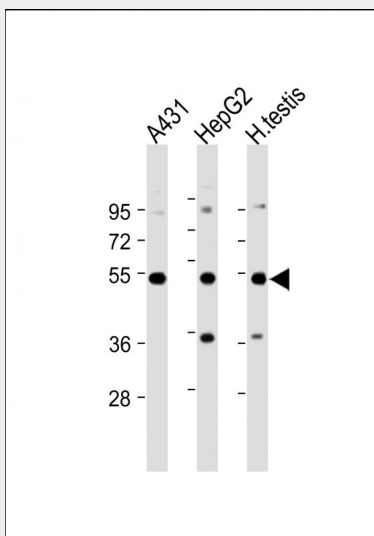
Ubiquitously expressed. Highest levels are found in testis, large intestine, brain and stomach followed by heart and lung

### **STK25 Antibody - Protocols**

Provided below are standard protocols that you may find useful for product applications.

- [Western Blot](#)
- [Blocking Peptides](#)
- [Dot Blot](#)
- [Immunohistochemistry](#)
- [Immunofluorescence](#)
- [Immunoprecipitation](#)
- [Flow Cytometry](#)
- [Cell Culture](#)

### **STK25 Antibody - Images**



All lanes : Anti-STK25 Antibody at 1:2000 dilution Lane 1: A431 whole cell lysate Lane 2: HepG2 whole cell lysate Lane 3: Human testis lysate Lysates/proteins at 20 µg per lane. Secondary Goat Anti-Rabbit IgG, (H+L), Peroxidase conjugated at 1/10000 dilution. Predicted band size : 48 kDa Blocking/Dilution buffer: 5% NFDM/TBST.

### **STK25 Antibody - Background**

Oxidant stress-activated serine/threonine kinase that may play a role in the response to environmental stress. Targets to the Golgi apparatus where it appears to regulate protein transport events, cell adhesion, and polarity complexes important for cell migration.

### **STK25 Antibody - References**

Pombo C.M.,et al.EMBO J. 15:4537-4546(1996).  
Osada S.,et al.Oncogene 14:2047-2057(1997).  
Kalnine N.,et al.Submitted (OCT-2004) to the EMBL/GenBank/DDBJ databases.  
Ota T.,et al.Nat. Genet. 36:40-45(2004).  
Hillier L.W.,et al.Nature 434:724-731(2005).