

**TGFA Antibody (C-Term)**  
**Purified Rabbit Polyclonal Antibody (Pab)**  
**Catalog # AP22303b****Specification**

---

**TGFA Antibody (C-Term) - Product Information**

Application	WB, FC,E
Primary Accession	<a href="#">P01135</a>
Other Accession	<a href="#">P48030</a> , <a href="#">Q06922</a> , <a href="#">P01134</a>
Reactivity	Human
Predicted	Mouse, Pig, Rat
Host	Rabbit
Clonality	polyclonal
Isotype	Rabbit IgG
Calculated MW	17006

**TGFA Antibody (C-Term) - Additional Information****Gene ID** 7039**Other Names**

Protransforming growth factor alpha, Transforming growth factor alpha, TGF-alpha, EGF-like TGF, ETGF, TGF type 1, TGFA

**Target/Specificity**

This TGFA antibody is generated from a rabbit immunized with a KLH conjugated synthetic peptide between 118-150 amino acids from the human region of human TGFA.

**Dilution**

WB~~1:2000  
FC~~1:25

**Format**

Purified polyclonal antibody supplied in PBS with 0.09% (W/V) sodium azide. This antibody is purified through a protein A column, followed by peptide affinity purification.

**Storage**

Maintain refrigerated at 2-8°C for up to 2 weeks. For long term storage store at -20°C in small aliquots to prevent freeze-thaw cycles.

**Precautions**

TGFA Antibody (C-Term) is for research use only and not for use in diagnostic or therapeutic procedures.

**TGFA Antibody (C-Term) - Protein Information****Name** TGFA

**Function** TGF alpha is a mitogenic polypeptide that is able to bind to the EGF receptor/EGFR and to act synergistically with TGF beta to promote anchorage-independent cell proliferation in soft agar.

#### Cellular Location

[Transforming growth factor alpha]: Secreted, extracellular space

#### Tissue Location

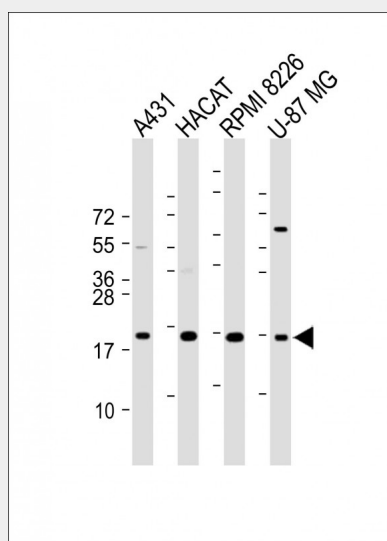
Isoform 1, isoform 3 and isoform 4 are expressed in keratinocytes and tumor-derived cell lines

### TGFA Antibody (C-Term) - Protocols

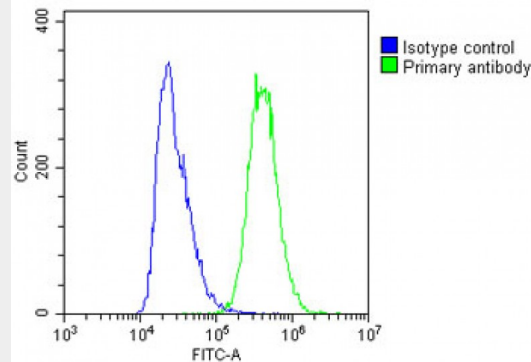
Provided below are standard protocols that you may find useful for product applications.

- [Western Blot](#)
- [Blocking Peptides](#)
- [Dot Blot](#)
- [Immunohistochemistry](#)
- [Immunofluorescence](#)
- [Immunoprecipitation](#)
- [Flow Cytometry](#)
- [Cell Culture](#)

### TGFA Antibody (C-Term) - Images



All lanes : Anti-TGFA Antibody (C-Term) at 1:2000 dilution Lane 1: A431 whole cell lysate Lane 2: HACAT whole cell lysate Lane 3: RPMI 8226 whole cell lysate Lane 4: U-87 MG whole cell lysate Lysates/proteins at 20 µg per lane. Secondary Goat Anti-Rabbit IgG, (H+L), Peroxidase conjugated at 1/10000 dilution. Predicted band size : 17 kDa Blocking/Dilution buffer: 5% NFDM/TBST.



Overlay histogram showing A431 cells stained with AP22303b (green line). The cells were fixed with 2% paraformaldehyde and then permeabilized with 90% methanol for 10 min. The cells were then incubated in 2% bovine serum albumin to block non-specific protein-protein interactions followed by the antibody (1:25 dilution) for 60 min at 37°C. The secondary antibody used was Goat-Anti-Rabbit IgG, DyLight® 488 Conjugated Highly Cross-Adsorbed at 1/200 dilution for 40 min at Room temperature. Isotype control antibody (blue line) was rabbit IgG1 (1µg/1x10<sup>6</sup> cells) used under the same conditions. Acquisition of >10,000 events was performed.

#### **TGFA Antibody (C-Term) - Background**

TGF alpha is a mitogenic polypeptide that is able to bind to the EGF receptor/EGFR and to act synergistically with TGF beta to promote anchorage-independent cell proliferation in soft agar.

#### **TGFA Antibody (C-Term) - References**

- Derynck R., et al. Cell 38:287-297(1984).
- Jakowlew S.B., et al. Mol. Endocrinol. 2:1056-1063(1988).
- Qian J.F., et al. Gene 132:291-296(1993).
- Qian J.F., et al. Am. J. Hum. Genet. 53:168-175(1993).
- Machida J., et al. Genomics 61:237-242(1999).