

IGFBP1 Antibody (Center)
Purified Rabbit Polyclonal Antibody (Pab)
Catalog # AP22309c**Specification**

IGFBP1 Antibody (Center) - Product Information

Application	WB,E
Primary Accession	P08833
Reactivity	Human
Host	Rabbit
Clonality	polyclonal
Isotype	Rabbit IgG
Calculated MW	27904

IGFBP1 Antibody (Center) - Additional Information**Gene ID** 3484**Other Names**

Insulin-like growth factor-binding protein 1, IBP-1, IGF-binding protein 1, IGFBP-1, Placental protein 12, PP12, IGFBP1, IBP1

Target/Specificity

This IGFBP1 antibody is generated from a rabbit immunized with a KLH conjugated synthetic peptide between 140-174 amino acids from the Central region of human IGFBP1.

Dilution

WB~~1:2000

Format

Purified polyclonal antibody supplied in PBS with 0.09% (W/V) sodium azide. This antibody is purified through a protein A column, followed by peptide affinity purification.

Storage

Maintain refrigerated at 2-8°C for up to 2 weeks. For long term storage store at -20°C in small aliquots to prevent freeze-thaw cycles.

Precautions

IGFBP1 Antibody (Center) is for research use only and not for use in diagnostic or therapeutic procedures.

IGFBP1 Antibody (Center) - Protein Information**Name** IGFBP1**Synonyms** IBP1**Function** IGF-binding proteins prolong the half-life of the IGFs and have been shown to either

inhibit or stimulate the growth promoting effects of the IGFs on cell culture. They alter the interaction of IGFs with their cell surface receptors. Promotes cell migration.

Cellular Location

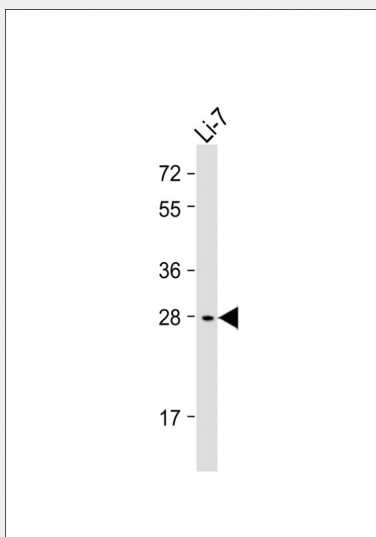
Secreted.

IGFBP1 Antibody (Center) - Protocols

Provided below are standard protocols that you may find useful for product applications.

- [Western Blot](#)
- [Blocking Peptides](#)
- [Dot Blot](#)
- [Immunohistochemistry](#)
- [Immunofluorescence](#)
- [Immunoprecipitation](#)
- [Flow Cytometry](#)
- [Cell Culture](#)

IGFBP1 Antibody (Center) - Images



Anti-IGFBP1 Antibody (Center) at 1:2000 dilution + Li-7 whole cell lysate Lysates/proteins at 20 µg per lane. Secondary Goat Anti-Rabbit IgG, (H+L), Peroxidase conjugated at 1/10000 dilution. Predicted band size : 28 kDa Blocking/Dilution buffer: 5% NFDN/TBST.

IGFBP1 Antibody (Center) - Background

IGF-binding proteins prolong the half-life of the IGFs and have been shown to either inhibit or stimulate the growth promoting effects of the IGFs on cell culture. They alter the interaction of IGFs with their cell surface receptors. Promotes cell migration.

IGFBP1 Antibody (Center) - References

- Brinkman A.,et al.EMBO J. 7:2417-2423(1988).
Brewer M.T.,et al.Biochem. Biophys. Res. Commun. 152:1289-1297(1988).
Grundmann U.,et al.Nucleic Acids Res. 16:8711-8711(1988).
Julkunen M.,et al.FEBS Lett. 236:295-302(1988).

Lee Y.-L., et al. Mol. Endocrinol. 2:404-411(1988).