

**GRM2 Antibody (C-Term)**  
**Purified Rabbit Polyclonal Antibody (Pab)**  
**Catalog # AP22322b****Specification**

---

**GRM2 Antibody (C-Term) - Product Information**

Application	WB,E
Primary Accession	<a href="#">Q14416</a>
Other Accession	<a href="#">P31421</a>
Reactivity	Human
Predicted	Rat
Host	Rabbit
Clonality	polyclonal
Isotype	Rabbit IgG
Calculated MW	95568

**GRM2 Antibody (C-Term) - Additional Information****Gene ID** 2912**Other Names**

Metabotropic glutamate receptor 2, mGluR2, GRM2, GPRC1B, MGLUR2

**Target/Specificity**

This GRM2 antibody is generated from a rabbit immunized with a KLH conjugated synthetic peptide between 681-715 amino acids from the human region of human GRM2.

**Dilution**

WB~~1:2000

**Format**

Purified polyclonal antibody supplied in PBS with 0.09% (W/V) sodium azide. This antibody is purified through a protein A column, followed by peptide affinity purification.

**Storage**

Maintain refrigerated at 2-8°C for up to 2 weeks. For long term storage store at -20°C in small aliquots to prevent freeze-thaw cycles.

**Precautions**

GRM2 Antibody (C-Term) is for research use only and not for use in diagnostic or therapeutic procedures.

**GRM2 Antibody (C-Term) - Protein Information****Name** GRM2 ([HGNC:4594](#))**Synonyms** GPRC1B, MGLUR2

**Function** G-protein coupled receptor for glutamate. Ligand binding causes a conformation change that triggers signaling via guanine nucleotide-binding proteins (G proteins) and modulates the activity of down-stream effectors, such as adenylate cyclase. Signaling inhibits adenylate cyclase activity. May mediate suppression of neurotransmission or may be involved in synaptogenesis or synaptic stabilization.

**Cellular Location**

Cell membrane; Multi-pass membrane protein. Synapse. Cell projection, dendrite

**Tissue Location**

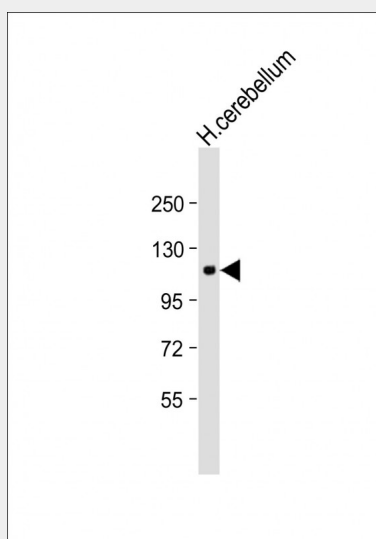
Detected in brain cortex (at protein level). Widely expressed in different regions of the adult brain as well as in fetal brain.

**GRM2 Antibody (C-Term) - Protocols**

Provided below are standard protocols that you may find useful for product applications.

- [Western Blot](#)
- [Blocking Peptides](#)
- [Dot Blot](#)
- [Immunohistochemistry](#)
- [Immunofluorescence](#)
- [Immunoprecipitation](#)
- [Flow Cytometry](#)
- [Cell Culture](#)

**GRM2 Antibody (C-Term) - Images**



Anti-GRM2 Antibody (C-Term) at 1:2000 dilution + Human cerebellum lysate Lysates/proteins at 20 µg per lane. Secondary Goat Anti-Rabbit IgG, (H+L), Peroxidase conjugated at 1/10000 dilution. Predicted band size : 96 kDa Blocking/Dilution buffer: 5% NFDM/TBST.

**GRM2 Antibody (C-Term) - Background**

G-protein coupled receptor for glutamate. Ligand binding causes a conformation change that triggers signaling via guanine nucleotide-binding proteins (G proteins) and modulates the activity of down-stream effectors, such as adenylate cyclase. Signaling inhibits adenylate cyclase activity. May

mediate suppression of neurotransmission or may be involved in synaptogenesis or synaptic stabilization.

#### **GRM2 Antibody (C-Term) - References**

Flor P.J.,et al.Eur. J. Neurosci. 7:622-629(1995).  
Yasuyuki F.,et al.Submitted (JUN-2000) to the EMBL/GenBank/DDBJ databases.  
Bonner T.I.,et al.Submitted (APR-2005) to the EMBL/GenBank/DDBJ databases.  
Kaighin V.A.,et al.Submitted (DEC-2007) to the EMBL/GenBank/DDBJ databases.  
Mural R.J.,et al.Submitted (JUL-2005) to the EMBL/GenBank/DDBJ databases.