

MAP4K1(Y381) Antibody
Purified Rabbit Polyclonal Antibody (Pab)
Catalog # AP22375a**Specification**

MAP4K1(Y381) Antibody - Product Information

Application	WB,E
Primary Accession	O92918
Reactivity	Human
Host	Rabbit
Clonality	polyclonal
Isotype	Rabbit IgG
Calculated MW	91296

MAP4K1(Y381) Antibody - Additional Information**Gene ID** 11184**Other Names**

Mitogen-activated protein kinase kinase kinase kinase 1, 2.7.11.1, Hematopoietic progenitor kinase, MAPK/ERK kinase kinase kinase 1, MEK kinase kinase 1, MEKKK 1, MAP4K1, HPK1

Target/Specificity

This MAP4K1(Y381) antibody is generated from a rabbit immunized with a KLH conjugated synthetic peptide between amino acids from the human region of human MAP4K1(Y381).

Dilution

WB~~1:2000

Format

Purified polyclonal antibody supplied in PBS with 0.09% (W/V) sodium azide. This antibody is purified through a protein A column, followed by peptide affinity purification.

Storage

Maintain refrigerated at 2-8°C for up to 2 weeks. For long term storage store at -20°C in small aliquots to prevent freeze-thaw cycles.

Precautions

MAP4K1(Y381) Antibody is for research use only and not for use in diagnostic or therapeutic procedures.

MAP4K1(Y381) Antibody - Protein Information**Name** MAP4K1**Synonyms** HPK1**Function** Serine/threonine-protein kinase, which may play a role in the response to environmental

stress (PubMed:[24362026](#)). Appears to act upstream of the JUN N-terminal pathway (PubMed:[8824585](#)). May play a role in hematopoietic lineage decisions and growth regulation (PubMed:[8824585](#), PubMed:[24362026](#)). Able to autophosphorylate (PubMed:[8824585](#)). Together with CLNK, it enhances CD3-triggered activation of T-cells and subsequent IL2 production (By similarity).

Tissue Location

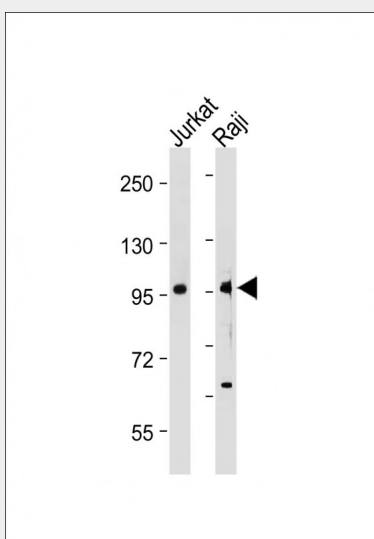
Expressed primarily in hematopoietic organs, including bone marrow, spleen and thymus. Also expressed at very low levels in lung, kidney, mammary glands and small intestine

MAP4K1(Y381) Antibody - Protocols

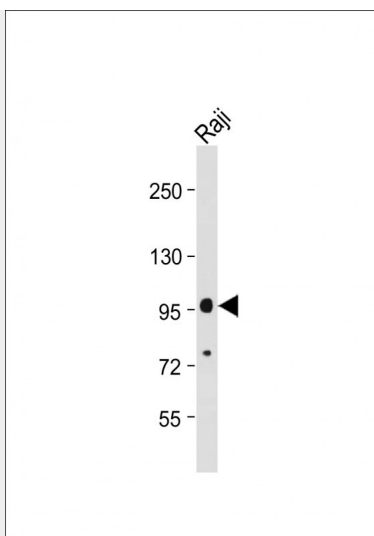
Provided below are standard protocols that you may find useful for product applications.

- [Western Blot](#)
- [Blocking Peptides](#)
- [Dot Blot](#)
- [Immunohistochemistry](#)
- [Immunofluorescence](#)
- [Immunoprecipitation](#)
- [Flow Cytometry](#)
- [Cell Culture](#)

MAP4K1(Y381) Antibody - Images



All lanes : Anti-MAP4K1(Y381) Antibody at 1:2000 dilution Lane 1: Jurkat whole cell lysate Lane 2: Raji whole cell lysate Lysates/proteins at 20 µg per lane. Secondary Goat Anti-Rabbit IgG, (H+L), Peroxidase conjugated at 1/10000 dilution. Predicted band size : 91 kDa Blocking/Dilution buffer: 5% NFDM/TBST.



Anti-MAP4K1(Y381) Antibody at 1:2000 dilution + Raji whole cell lysate Lysates/proteins at 20 µg per lane. Secondary Goat Anti-Rabbit IgG, (H+L), Peroxidase conjugated at 1/10000 dilution. Predicted band size : 91 kDa Blocking/Dilution buffer: 5% NFDM/TBST.

MAP4K1(Y381) Antibody - Background

Serine/threonine-protein kinase, which may play a role in the response to environmental stress. Appears to act upstream of the JUN N-terminal pathway. May play a role in hematopoietic lineage decisions and growth regulation. Able to autophosphorylate.

MAP4K1(Y381) Antibody - References

Hu M.C.-T.,et al.Genes Dev. 10:2251-2264(1996).
Grimwood J.,et al.Nature 428:529-535(2004).
Oppermann F.S.,et al.Mol. Cell. Proteomics 8:1751-1764(2009).
Mayya V.,et al.Sci. Signal. 2:RA46-RA46(2009).
Burkard T.R.,et al.BMC Syst. Biol. 5:17-17(2011).