

**ICMT (C-term) Antibody**  
**Purified Rabbit Polyclonal Antibody (Pab)**  
**Catalog # AP2543b****Specification**

---

**ICMT (C-term) Antibody - Product Information**

|                   |                        |
|-------------------|------------------------|
| Application       | WB,E                   |
| Primary Accession | <a href="#">O60725</a> |
| Reactivity        | Human                  |
| Host              | Rabbit                 |
| Clonality         | Polyclonal             |
| Isotype           | Rabbit IgG             |
| Calculated MW     | 31938                  |
| Antigen Region    | 250-284                |

**ICMT (C-term) Antibody - Additional Information****Gene ID** 23463**Other Names**

Protein-S-isoprenylcysteine O-methyltransferase, Isoprenylcysteine carboxylmethyltransferase, Prenylated protein carboxyl methyltransferase, PPMT, Prenylcysteine carboxyl methyltransferase, pcCMT, ICMT, PCCMT

**Target/Specificity**

This ICMT antibody is generated from rabbits immunized with a KLH conjugated synthetic peptide between 250-284 amino acids from the C-terminal region of human ICMT.

**Dilution**

WB~~1:1000

**Format**

Purified polyclonal antibody supplied in PBS with 0.09% (W/V) sodium azide. This antibody is prepared by Saturated Ammonium Sulfate (SAS) precipitation followed by dialysis against PBS.

**Storage**

Maintain refrigerated at 2-8°C for up to 2 weeks. For long term storage store at -20°C in small aliquots to prevent freeze-thaw cycles.

**Precautions**

ICMT (C-term) Antibody is for research use only and not for use in diagnostic or therapeutic procedures.

**ICMT (C-term) Antibody - Protein Information****Name** ICMT**Synonyms** PCCMT

**Function** Catalyzes the post-translational methylation of isoprenylated C-terminal cysteine residues.

**Cellular Location**

Endoplasmic reticulum membrane; Multi-pass membrane protein

**Tissue Location**

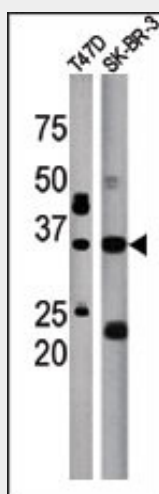
Ubiquitously expressed. Expressed at higher levels in the cerebellum and putamen than in other brain regions. Abundant expression seen in the Purkinje cells and pontine neurons

**ICMT (C-term) Antibody - Protocols**

Provided below are standard protocols that you may find useful for product applications.

- [Western Blot](#)
- [Blocking Peptides](#)
- [Dot Blot](#)
- [Immunohistochemistry](#)
- [Immunofluorescence](#)
- [Immunoprecipitation](#)
- [Flow Cytometry](#)
- [Cell Culture](#)

**ICMT (C-term) Antibody - Images**



The anti-ICMT Pab (Cat. #AP2543b) is used in Western blot to detect ICMT in T47D (left) and SK-BR-3 (right) tissue lysate

**ICMT (C-term) Antibody - Background**

This gene encodes the third of three enzymes that posttranslationally modify isoprenylated C-terminal cysteine residues in certain proteins and target those proteins to the cell membrane. This enzyme localizes to the endoplasmic reticulum. Alternative splicing results in two transcript variants encoding different isoforms.

**ICMT (C-term) Antibody - References**

Bergo, M.O., et al., J. Clin. Invest. 113(4):539-550 (2004).  
Ahmad, M., et al., Arterioscler. Thromb. Vasc. Biol. 22(5):759-764 (2002).

Van Dessel, G.A., et al., Int. J. Biochem. Cell Biol. 34(5):477-486 (2002).  
Dai, Q., et al., J. Biol. Chem. 273(24):15030-15034 (1998).