

EOMES (TBR2) Antibody (N-term)
Affinity Purified Rabbit Polyclonal Antibody (Pab)
Catalog # AP2703a**Specification**

EOMES (TBR2) Antibody (N-term) - Product Information

Application	WB,E
Primary Accession	O95936
Reactivity	Human
Host	Rabbit
Clonality	Polyclonal
Isotype	Rabbit IgG
Calculated MW	72732
Antigen Region	26-57

EOMES (TBR2) Antibody (N-term) - Additional Information**Gene ID** 8320**Other Names**

Eomesodermin homolog, T-box brain protein 2, T-brain-2, TBR-2, EOMES, TBR2

Target/Specificity

This EOMES (TBR2) antibody is generated from rabbits immunized with a KLH conjugated synthetic peptide between 26-57 amino acids from the N-terminal region of human EOMES (TBR2).

Dilution

WB~~1:1000

Format

Purified polyclonal antibody supplied in PBS with 0.09% (W/V) sodium azide. This antibody is purified through a protein A column, followed by peptide affinity purification.

Storage

Maintain refrigerated at 2-8°C for up to 2 weeks. For long term storage store at -20°C in small aliquots to prevent freeze-thaw cycles.

Precautions

EOMES (TBR2) Antibody (N-term) is for research use only and not for use in diagnostic or therapeutic procedures.

EOMES (TBR2) Antibody (N-term) - Protein Information**Name** EOMES**Synonyms** TBR2**Function** Functions as a transcriptional activator playing a crucial role during development.

Functions in trophoblast differentiation and later in gastrulation, regulating both mesoderm delamination and endoderm specification. Plays a role in brain development being required for the specification and the proliferation of the intermediate progenitor cells and their progeny in the cerebral cortex. Also involved in the differentiation of CD8+ T-cells during immune response regulating the expression of lytic effector genes.

Cellular Location

Nucleus.

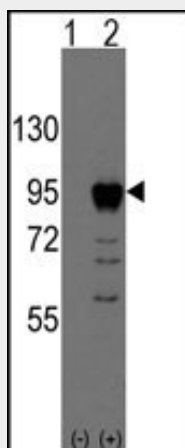
Tissue Location

Expressed in CD8+ T-cells.

EOMES (TBR2) Antibody (N-term) - Protocols

Provided below are standard protocols that you may find useful for product applications.

- [Western Blot](#)
- [Blocking Peptides](#)
- [Dot Blot](#)
- [Immunohistochemistry](#)
- [Immunofluorescence](#)
- [Immunoprecipitation](#)
- [Flow Cytometry](#)
- [Cell Culture](#)

EOMES (TBR2) Antibody (N-term) - Images

Western blot analysis of EOMES (arrow) using rabbit polyclonal EOMES Antibody (Human N-term) (RB10349). 293 cell lysates (2 ug/lane) either nontransfected (Lane 1) or transiently transfected with the EOMES gene (Lane 2) (Origene Technologies).

EOMES (TBR2) Antibody (N-term) - Background

This protein is a member of a conserved protein family that shares a common DNA-binding domain, the T-box. T-box genes encode transcription factors involved in the regulation of developmental processes. A similar protein disrupted in mice is shown to be essential during trophoblast development and gastrulation.

EOMES (TBR2) Antibody (N-term) - References

Baala,L., Nat. Genet. 39 (4), 454-456 (2007)
Intlekofer,A.M.,Nat. Immunol. 6 (12), 1236-1244 (2005)
Kimura,N., Brain Res. Dev. Brain Res. 115 (2), 183-193 (1999)
Yi,C.H.,Genomics 55 (1), 10-20 (1999)