

**M Sema5a Antibody (N-term)**  
**Purified Rabbit Polyclonal Antibody (Pab)**  
**Catalog # AP2712a****Specification**

---

**M Sema5a Antibody (N-term) - Product Information**

Application	WB,E
Primary Accession	<a href="#">Q13591</a>
Other Accession	<a href="#">D3ZTD8</a> , <a href="#">Q62217</a>
Reactivity	Mouse
Predicted	Rat
Host	Rabbit
Clonality	Polyclonal
Isotype	Rabbit IgG

**M Sema5a Antibody (N-term) - Additional Information****Gene ID** 9037**Other Names**

Semaphorin-5A, Semaphorin-F, Sema F, SEMA5A, SEMAF

**Target/Specificity**

This Mouse Sema5a antibody is generated from rabbits immunized with a KLH conjugated synthetic peptide selected from the N-terminal region of mouse Sema5a.

**Dilution**

WB~~1:1000

**Format**

Purified polyclonal antibody supplied in PBS with 0.09% (W/V) sodium azide. This antibody is purified through a protein A column, followed by peptide affinity purification.

**Storage**

Maintain refrigerated at 2-8°C for up to 2 weeks. For long term storage store at -20°C in small aliquots to prevent freeze-thaw cycles.

**Precautions**

M Sema5a Antibody (N-term) is for research use only and not for use in diagnostic or therapeutic procedures.

**M Sema5a Antibody (N-term) - Protein Information****Name** SEMA5A**Synonyms** SEMAF**Function** Bifunctional axonal guidance cue regulated by sulfated proteoglycans; attractive effects

result from interactions with heparan sulfate proteoglycans (HSPGs), while the inhibitory effects depend on interactions with chondroitin sulfate proteoglycans (CSPGs) (By similarity). Ligand for receptor PLXNB3. In glioma cells, SEMA5A stimulation of PLXNB3 results in the disassembly of F-actin stress fibers, disruption of focal adhesions and cellular collapse as well as inhibition of cell migration and invasion through ARHGDIA-mediated inactivation of RAC1. May promote angiogenesis by increasing endothelial cell proliferation and migration and inhibiting apoptosis.

#### **Cellular Location**

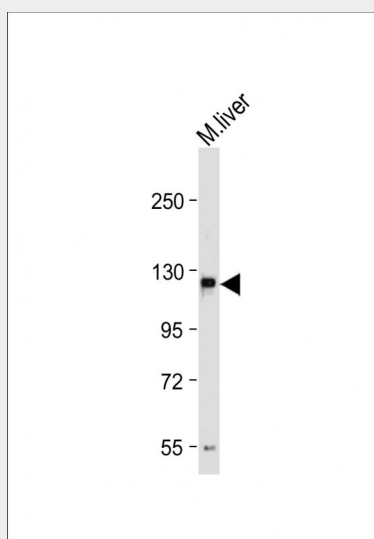
Membrane; Single-pass type I membrane protein.

### **M Sema5a Antibody (N-term) - Protocols**

Provided below are standard protocols that you may find useful for product applications.

- [Western Blot](#)
- [Blocking Peptides](#)
- [Dot Blot](#)
- [Immunohistochemistry](#)
- [Immunofluorescence](#)
- [Immunoprecipitation](#)
- [Flow Cytometry](#)
- [Cell Culture](#)

### **M Sema5a Antibody (N-term) - Images**



Anti-M Sema5a Antibody (N-term) at 1:1000 dilution + Mouse liver tissue lysate Lysates/proteins at 20 µg per lane. Secondary Goat Anti-Rabbit IgG, (H+L), Peroxidase conjugated at 1/10000 dilution. Predicted band size : 121 kDa Blocking/Dilution buffer: 5% NFDM/TBST.

### **M Sema5a Antibody (N-term) - Background**

Members of the semaphorin protein family, such as SEMA5A, are involved in axonal guidance during neural development.

### **M Sema5a Antibody (N-term) - References**

Bialecka,M., Neurosci. Lett. 399 (1-2), 121-123 (2006)

Melin,M., Neuropsychobiology 54 (1), 64-69 (2006)

**M Sema5a Antibody (N-term) - Citations**

- [Identification of a novel biomarker, SEMA5A, for non-small cell lung carcinoma in nonsmoking women.](#)