

Dtnbp1 Antibody (N-term)
Purified Rabbit Polyclonal Antibody (Pab)
Catalog # AP2714a**Specification**

Dtnbp1 Antibody (N-term) - Product Information

Application	WB, IHC-P,E
Primary Accession	O91WZ8
Reactivity	Human, Mouse
Host	Rabbit
Clonality	Polyclonal
Isotype	Rabbit IgG
Calculated MW	39651
Antigen Region	8-38

Dtnbp1 Antibody (N-term) - Additional Information**Gene ID** 94245**Other Names**

Dysbindin, Biogenesis of lysosome-related organelles complex 1 subunit 8, BLOC-1 subunit 8, Dysbindin-1, Dystrobrevin-binding protein 1, Hermansky-Pudlak syndrome 7 protein homolog, HPS7 protein homolog, Dtnbp1, Bloc1s8, Sdy

Target/Specificity

This Dtnbp1 antibody is generated from rabbits immunized with a KLH conjugated synthetic peptide between 8-38 amino acids from the N-terminal region of human Dtnbp1.

Dilution

WB~~1:1000
IHC-P~~1:10~50

Format

Purified polyclonal antibody supplied in PBS with 0.09% (W/V) sodium azide. This antibody is purified through a protein G column, followed by dialysis against PBS.

Storage

Maintain refrigerated at 2-8°C for up to 2 weeks. For long term storage store at -20°C in small aliquots to prevent freeze-thaw cycles.

Precautions

Dtnbp1 Antibody (N-term) is for research use only and not for use in diagnostic or therapeutic procedures.

Dtnbp1 Antibody (N-term) - Protein Information**Name** Dtnbp1

Synonyms Bloc1s8, Sdy

Function Component of the BLOC-1 complex, a complex that is required for normal biogenesis of lysosome-related organelles (LRO), such as platelet dense granules and melanosomes. In concert with the AP-3 complex, the BLOC-1 complex is required to target membrane protein cargos into vesicles assembled at cell bodies for delivery into neurites and nerve terminals. The BLOC-1 complex, in association with SNARE proteins, is also proposed to be involved in neurite extension. Associates with the BLOC-2 complex to facilitate the transport of TYRP1 independent of AP-3 function. Plays a role in synaptic vesicle trafficking and in neurotransmitter release. Plays a role in the regulation of cell surface exposure of DRD2. May play a role in actin cytoskeleton reorganization and neurite outgrowth. May modulate MAPK8 phosphorylation. Appears to promote neuronal transmission and viability through regulating the expression of SNAP25 and SYN1, modulating PI3- kinase-Akt signaling and influencing glutamatergic release. Regulates the expression of SYN1 through binding to its promoter. Modulates prefrontal cortical activity via the dopamine/D2 pathway.

Cellular Location

[Isoform 1]: Cytoplasm. Cytoplasmic vesicle membrane; Peripheral membrane protein; Cytoplasmic side. Endosome membrane; Peripheral membrane protein; Cytoplasmic side. Melanosome membrane; Peripheral membrane protein; Cytoplasmic side. Postsynaptic density. Endoplasmic reticulum. Nucleus. Note=Mainly cytoplasmic but shuttles between the cytoplasm and nucleus. Exported out of the nucleus via its NES in a XPO1-dependent manner. Nuclear localization is required for regulation of the expression of genes such as SYN1. Detected in neuron cell bodies, axons and dendrites. Mainly located to the postsynaptic density. Detected at tubulovesicular elements in the vicinity of the Golgi apparatus and of melanosomes Occasionally detected at the membrane of pigmented melanosomes in cultured melanoma cells (By similarity). The BLOC-1 complex associates with the BLOC-2 complex in early endosome-associated tubules Associated with the AP-3 complex at presynaptic terminals

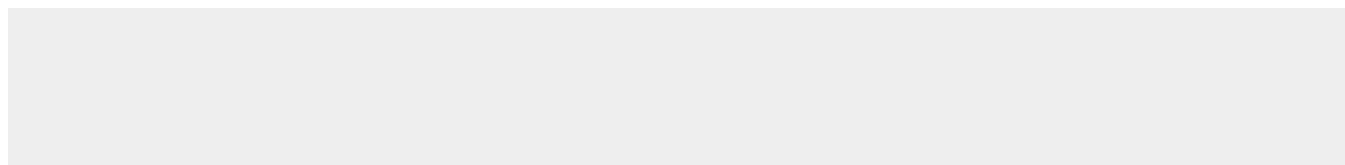
Tissue Location

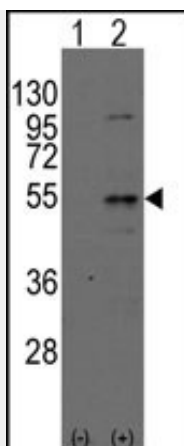
Detected in brain, in hippocampus and dentate gyrus neurons. Detected at axon bundles and axon terminals, notably in the cerebellum and hippocampus. Detected in neuropil in hippocampus, lateral septum, basal ganglia and substantia nigra. Highly expressed in pyramidal cells of hippocampus CA2 and CA3. Detected at the heart and skeletal muscle sarcolemma (at protein level). Ubiquitously expressed The highest expression is observed in testis, liver, kidney, brain, heart and lung. Expressed at lower levels in stomach and small intestine.

Dtnbp1 Antibody (N-term) - Protocols

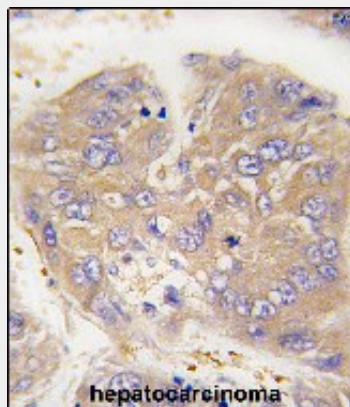
Provided below are standard protocols that you may find useful for product applications.

- [Western Blot](#)
- [Blocking Peptides](#)
- [Dot Blot](#)
- [Immunohistochemistry](#)
- [Immunofluorescence](#)
- [Immunoprecipitation](#)
- [Flow Cytometry](#)
- [Cell Culture](#)

Dtnbp1 Antibody (N-term) - Images



Western blot analysis of Dtnbpt (arrow) using rabbit polyclonal Dysbindin (Dtnbp1) Antibody (N-term) (Cat.#AP2714a). 293 cell lysates (2 ug/lane) either nontransfected (Lane 1) or transiently transfected with the Dtnbpt gene (Lane 2) (Origene Technologies).



Formalin-fixed and paraffin-embedded human hepatocarcinoma tissue reacted with Dtnbp1 Antibody (N-term) (Cat.#AP2714a), which was peroxidase-conjugated to the secondary antibody, followed by DAB staining. This data demonstrates the use of this antibody for immunohistochemistry; clinical relevance has not been evaluated.

Dtnbp1 Antibody (N-term) - Background

Dtnbp1 may play a role in organelle biogenesis associated with melanosomes, platelet dense granules, and lysosomes. A similar protein in mouse is a component of a protein complex termed biogenesis of lysosome-related organelles complex 1 (BLOC-1), and binds to alpha- and beta-dystrobrevins, which are components of the dystrophin-associated protein complex (DPC). Mutations are associated with Hermansky-Pudlak syndrome type 7. This protein may also be associated with schizophrenia.

Dtnbp1 Antibody (N-term) - References

Benson M.A., J. Biol. Chem. 276:24232-24241(2001).
Li W., Nat. Genet. 35:84-89(2003).
Talbot K., Hum. Mol. Genet. 15:3041-3054(2006).