

**NPTX2 Antibody (C-term)**  
**Purified Rabbit Polyclonal Antibody (Pab)**  
**Catalog # AP2718b****Specification**

---

**NPTX2 Antibody (C-term) - Product Information**

Application	WB, IHC-P,E
Primary Accession	<a href="#">P47972</a>
Other Accession	<a href="#">P97738</a> , <a href="#">O70340</a>
Reactivity	Human
Predicted	Mouse, Rat
Host	Rabbit
Clonality	Polyclonal
Isotype	Rabbit IgG
Calculated MW	47042
Antigen Region	309-338

**NPTX2 Antibody (C-term) - Additional Information****Gene ID** 4885**Other Names**

Neuronal pentraxin-2, NP2, Neuronal pentraxin II, NP-II, NPTX2

**Target/Specificity**

This NPTX2 antibody is generated from rabbits immunized with a KLH conjugated synthetic peptide between 309-338 amino acids from the C-terminal region of human NPTX2.

**Dilution**

WB~~1:1000

IHC-P~~1:10~50

**Format**

Purified polyclonal antibody supplied in PBS with 0.09% (W/V) sodium azide. This antibody is purified through a protein G column, followed by dialysis against PBS.

**Storage**

Maintain refrigerated at 2-8°C for up to 2 weeks. For long term storage store at -20°C in small aliquots to prevent freeze-thaw cycles.

**Precautions**

NPTX2 Antibody (C-term) is for research use only and not for use in diagnostic or therapeutic procedures.

**NPTX2 Antibody (C-term) - Protein Information****Name** NPTX2

**Function** Likely to play role in the modification of cellular properties that underlie long-term plasticity. Binds to agar matrix in a calcium-dependent manner (By similarity).

**Cellular Location**

Secreted.

**Tissue Location**

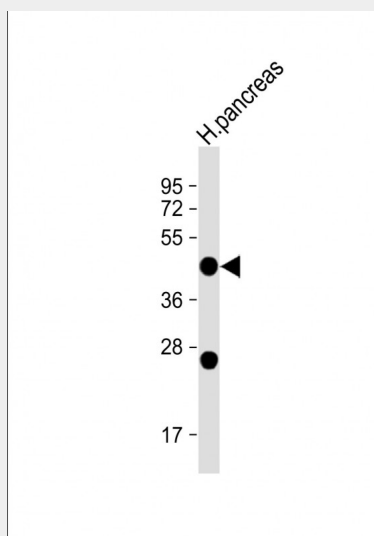
Brain, pancreas, liver, heart and skeletal muscle. Highest levels are seen in the testis

**NPTX2 Antibody (C-term) - Protocols**

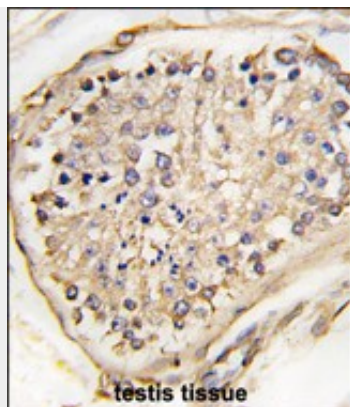
Provided below are standard protocols that you may find useful for product applications.

- [Western Blot](#)
- [Blocking Peptides](#)
- [Dot Blot](#)
- [Immunohistochemistry](#)
- [Immunofluorescence](#)
- [Immunoprecipitation](#)
- [Flow Cytometry](#)
- [Cell Culture](#)

**NPTX2 Antibody (C-term) - Images**



Anti-NPTX2 (C-term) at 1:1000 dilution + H. pancreas whole cell lysate Lysates/proteins at 20 µg per lane. Secondary Goat Anti-Rabbit IgG, (H+L), Peroxidase conjugated at 1/10000 dilution. Predicted band size : 47 kDa Blocking/Dilution buffer: 5% NFDM/TBST.



Formalin-fixed and paraffin-embedded human testis tissue reacted with NARP(Nptx2) Antibody (C-term) (Cat.#AP2718b), which was peroxidase-conjugated to the secondary antibody, followed by DAB staining. This data demonstrates the use of this antibody for immunohistochemistry; clinical relevance has not been evaluated.

#### **NPTX2 Antibody (C-term) - Background**

NPTX2 is likely to play a role in the modification of cellular properties that underlie long-term plasticity. It binds to agar matrix in a calcium-dependent manner.

#### **NPTX2 Antibody (C-term) - References**

- Park,J.K., Pancreas 35 (3), E9-E15 (2007)
- Marui,T., Prog. Neuropsychopharmacol. Biol. Psychiatry 31 (4), 940-943 (2007)
- Kirkpatrick,L.L., J. Biol. Chem. 275 (23), 17786-17792 (2000)
- Dodds,D.C., . Biol. Chem. 272 (34), 21488-21494 (1997)
- Hsu,Y.C., Genomics 28 (2), 220-227 (1995)