

**Olfm1 Antibody (C-term)**  
**Purified Rabbit Polyclonal Antibody (Pab)**  
**Catalog # AP2719b****Specification**

---

**Olfm1 Antibody (C-term) - Product Information**

Application	WB,E
Primary Accession	<a href="#">Q99784</a>
Other Accession	<a href="#">Q62609</a> , <a href="#">Q88998</a> , <a href="#">Q9IAK4</a>
Reactivity	Human
Predicted	Chicken, Mouse, Rat
Host	Rabbit
Clonality	Polyclonal
Isotype	Rabbit IgG
Calculated MW	55343
Antigen Region	434-463

**Olfm1 Antibody (C-term) - Additional Information****Gene ID** 10439**Other Names**

Noelin, Neuronal olfactomedin-related ER localized protein, Olfactomedin-1, OLFM1, NOE1, NOEL1

**Target/Specificity**

This Olfm1 antibody is generated from rabbits immunized with a KLH conjugated synthetic peptide between 434-463 amino acids from the C-terminal region of human Olfm1.

**Dilution**

WB~~1:1000

**Format**

Purified polyclonal antibody supplied in PBS with 0.09% (W/V) sodium azide. This antibody is purified through a protein G column, followed by dialysis against PBS.

**Storage**

Maintain refrigerated at 2-8°C for up to 2 weeks. For long term storage store at -20°C in small aliquots to prevent freeze-thaw cycles.

**Precautions**

Olfm1 Antibody (C-term) is for research use only and not for use in diagnostic or therapeutic procedures.

**Olfm1 Antibody (C-term) - Protein Information****Name** OLFM1**Synonyms** NOE1, NOEL1

**Function** Contributes to the regulation of axonal growth in the embryonic and adult central nervous system by inhibiting interactions between RTN4R and LINGO1. Inhibits RTN4R-mediated axon growth cone collapse (By similarity). May play an important role in regulating the production of neural crest cells by the neural tube (By similarity). May be required for normal responses to olfactory stimuli (By similarity).

#### Cellular Location

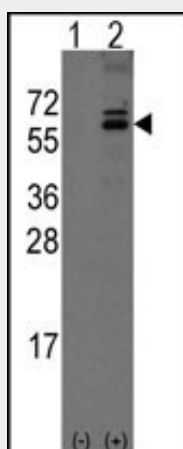
Secreted {ECO:0000250|UniProtKB:O88998}. Synapse {ECO:0000250|UniProtKB:O88998}. Endoplasmic reticulum {ECO:0000250|UniProtKB:O88998}. Cell projection, axon {ECO:0000250|UniProtKB:O88998}. Perikaryon {ECO:0000250|UniProtKB:O88998}

### Olfm1 Antibody (C-term) - Protocols

Provided below are standard protocols that you may find useful for product applications.

- [Western Blot](#)
- [Blocking Peptides](#)
- [Dot Blot](#)
- [Immunohistochemistry](#)
- [Immunofluorescence](#)
- [Immunoprecipitation](#)
- [Flow Cytometry](#)
- [Cell Culture](#)

### Olfm1 Antibody (C-term) - Images



Western blot analysis of Noelin-1(Olfm1) (arrow) using rabbit polyclonal Noelin-1(Olfm1) Antibody (C-term) (Cat.#AP2719b). 293 cell lysates (2 ug/lane) either nontransfected (Lane 1) or transiently transfected with the Noelin-1(Olfm1) gene (Lane 2) (Origene Technologies).

### Olfm1 Antibody (C-term) - Background

Olfm1 shares extensive sequence similarity with the rat neuronal olfactomedin-related ER localized protein. While the exact function of this protein is not known, its abundant expression in brain suggests that it may have an essential role in nerve tissue.

### Olfm1 Antibody (C-term) - References

Yokoyama M., DNA Res. 3:311-320(1996).  
Yu W., Genome Res. 7:353-358(1997).

Liu T.,J. Proteome Res. 4:2070-2080(2005).