

**DAAM1 Antibody (C-term)**  
**Affinity Purified Rabbit Polyclonal Antibody (Pab)**  
**Catalog # AP2720b**

**Specification**

---

**DAAM1 Antibody (C-term) - Product Information**

Application	WB, IHC-P,E
Primary Accession	<a href="#">O9Y4D1</a>
Reactivity	Human
Host	Rabbit
Clonality	Polyclonal
Isotype	Rabbit IgG
Calculated MW	123473
Antigen Region	1034-1063

**DAAM1 Antibody (C-term) - Additional Information**

**Gene ID** 23002

**Other Names**

Disheveled-associated activator of morphogenesis 1, DAAM1, KIAA0666

**Target/Specificity**

This DAAM1 antibody is generated from rabbits immunized with a KLH conjugated synthetic peptide between 1034-1063 amino acids from the C-terminal region of human DAAM1.

**Dilution**

WB~~1:1000

IHC-P~~1:10~50

**Format**

Purified polyclonal antibody supplied in PBS with 0.09% (W/V) sodium azide. This antibody is purified through a protein A column, followed by peptide affinity purification.

**Storage**

Maintain refrigerated at 2-8°C for up to 2 weeks. For long term storage store at -20°C in small aliquots to prevent freeze-thaw cycles.

**Precautions**

DAAM1 Antibody (C-term) is for research use only and not for use in diagnostic or therapeutic procedures.

**DAAM1 Antibody (C-term) - Protein Information**

**Name** DAAM1

**Synonyms** KIAA0666

**Function** Binds to disheveled (Dvl) and Rho, and mediates Wnt-induced Dvl-Rho complex formation. May play a role as a scaffolding protein to recruit Rho-GDP and Rho-GEF, thereby enhancing Rho-GTP formation. Can direct nucleation and elongation of new actin filaments. Involved in building functional cilia (PubMed:[16630611](#), PubMed:[17482208](#)). Involved in the organization of the subapical actin network in multiciliated epithelial cells (By similarity). Together with DAAM2, required for myocardial maturation and sarcomere assembly (By similarity).

**Cellular Location**

Cytoplasm. Cytoplasm, cytoskeleton, cilium basal body. Note=Perinuclear

**Tissue Location**

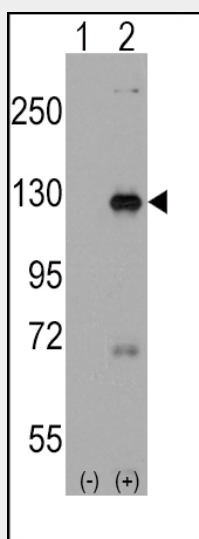
Expressed in all tissues examined.

**DAAM1 Antibody (C-term) - Protocols**

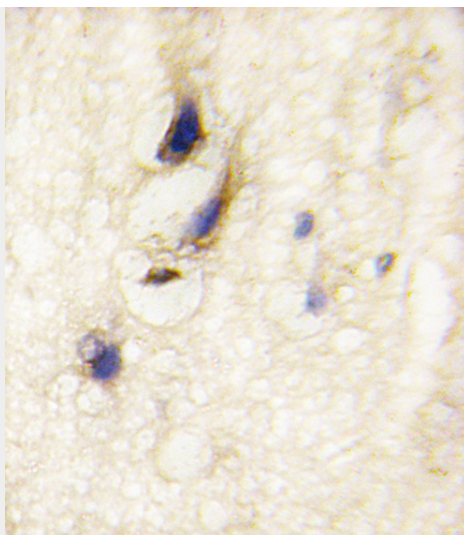
Provided below are standard protocols that you may find useful for product applications.

- [Western Blot](#)
- [Blocking Peptides](#)
- [Dot Blot](#)
- [Immunohistochemistry](#)
- [Immunofluorescence](#)
- [Immunoprecipitation](#)
- [Flow Cytometry](#)
- [Cell Culture](#)

**DAAM1 Antibody (C-term) - Images**



Western blot analysis of DAAM1 (arrow) using rabbit polyclonal DAAM1 Antibody(Human C-term) (Cat.#AP2720b). 293 cell lysates (2 ug/lane) either nontransfected (Lane 1) or transiently transfected with the DAAM1 gene (Lane 2) (Origene Technologies).



Formalin-fixed and paraffin-embedded human brain tissue reacted with DAAM1 Antibody (C-term) (Cat.#AP2720b), which was peroxidase-conjugated to the secondary antibody, followed by DAB staining. This data demonstrates the use of this antibody for immunohistochemistry; clinical relevance has not been evaluated.

#### **DAAM1 Antibody (C-term) - Background**

Functions of the cell cortex, including motility, adhesion, and cytokinesis, are mediated by the reorganization of the actin cytoskeleton and recent evidence suggests a role for the Formin homology (FH) proteins in these processes. DAAM1 contains FH domains and belongs to a novel FH protein subfamily implicated in cell polarity. Wnt/Fz signaling activates the small GTPase Rho, a key regulator of cytoskeleton architecture, to control cell polarity and movement during development. Activation requires Dvl-Rho complex formation, an assembly mediated by DAAM1, which is thought to function as a scaffolding protein.

#### **DAAM1 Antibody (C-term) - References**

Liu,W., Proc. Natl. Acad. Sci. U.S.A. 105 (1), 210-215 (2008)  
Yamashita,M.,Genes Cells 12 (11), 1255-1265 (2007)  
Lu,J., J. Mol. Biol. 369 (5), 1258-1269 (2007)

#### **DAAM1 Antibody (C-term) - Citations**

- [DAAM1 stabilizes epithelial junctions by restraining WAVE complex-dependent lateral membrane motility.](#)