

**WIF1 Antibody (N-term)**  
**Affinity Purified Rabbit Polyclonal Antibody (Pab)**  
**Catalog # AP2723a**

**Specification**

---

**WIF1 Antibody (N-term) - Product Information**

Application	WB, IHC-P,E
Primary Accession	<a href="#">Q9Y5W5</a>
Other Accession	<a href="#">Q9W6F8</a> , <a href="#">Q6IN38</a> , <a href="#">Q9WUA1</a> , <a href="#">Q9W6F9</a>
Reactivity	Human
Predicted	Zebrafish, Mouse, Rat, Xenopus
Host	Rabbit
Clonality	Polyclonal
Isotype	Rabbit IgG
Antigen Region	51-80

**WIF1 Antibody (N-term) - Additional Information**

**Gene ID** 11197

**Other Names**

Wnt inhibitory factor 1, WIF-1, WIF1

**Target/Specificity**

This WIF1 antibody is generated from rabbits immunized with a KLH conjugated synthetic peptide between 51-80 amino acids from the N-terminal region of human WIF1.

**Dilution**

WB~~1:1000

IHC-P~~1:10~50

**Format**

Purified polyclonal antibody supplied in PBS with 0.09% (W/V) sodium azide. This antibody is purified through a protein A column, followed by peptide affinity purification.

**Storage**

Maintain refrigerated at 2-8°C for up to 2 weeks. For long term storage store at -20°C in small aliquots to prevent freeze-thaw cycles.

**Precautions**

WIF1 Antibody (N-term) is for research use only and not for use in diagnostic or therapeutic procedures.

**WIF1 Antibody (N-term) - Protein Information**

**Name** WIF1

**Function** Binds to WNT proteins and inhibits their activities. May be involved in mesoderm

segmentation.

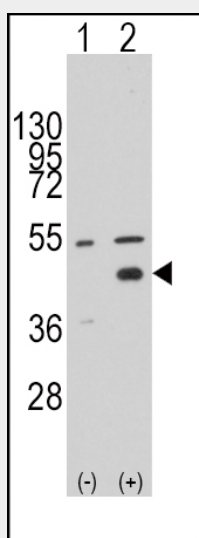
**Cellular Location**  
Secreted.

### WIF1 Antibody (N-term) - Protocols

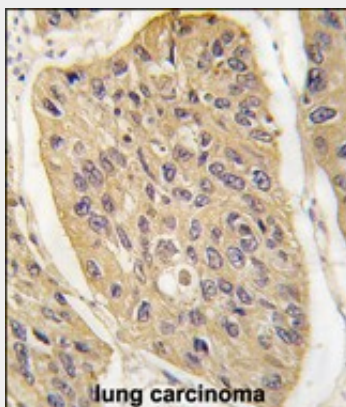
Provided below are standard protocols that you may find useful for product applications.

- [Western Blot](#)
- [Blocking Peptides](#)
- [Dot Blot](#)
- [Immunohistochemistry](#)
- [Immunofluorescence](#)
- [Immunoprecipitation](#)
- [Flow Cytometry](#)
- [Cell Culture](#)

### WIF1 Antibody (N-term) - Images



Western blot analysis of WIF1 (arrow) using rabbit polyclonal WIF1 Antibody (N-term) (Cat.#AP2723a). 293 cell lysates (2 ug/lane) either nontransfected (Lane 1) or transiently transfected with the WIF1 gene (Lane 2) (Origene Technologies).



Formalin-fixed and paraffin-embedded human lung carcinoma tissue reacted with WIF1 (Human C-term) (Cat.#AP2723a), which was peroxidase-conjugated to the secondary antibody, followed by DAB staining. This data demonstrates the use of this antibody for immunohistochemistry; clinical relevance has not been evaluated.

#### **WIF1 Antibody (N-term) - Background**

WNT proteins are extracellular signaling molecules involved in the control of embryonic development. WIF1 is a secreted protein, which binds WNT proteins and inhibits their activities. This protein contains a WNT inhibitory factor (WIF) domain and 5 epidermal growth factor (EGF)-like domains. It may be involved in mesoderm segmentation. This protein is found to be present in fish, amphibia and mammals.

#### **WIF1 Antibody (N-term) - References**

Elston,M.S., Endocrinology 149 (3), 1235-1242 (2008)  
Clement,G., Cancer Sci. 99 (1), 46-53 (2008)  
Chan,S.L., Lab. Invest. 87 (7), 644-650 (2007)

#### **WIF1 Antibody (N-term) - Citations**

- [Expression and promoter methylation of Wnt inhibitory factor-1 in the development of oral submucous fibrosis.](#)