

**PPAT Antibody (Center)**  
**Purified Rabbit Polyclonal Antibody (Pab)**  
**Catalog # AP2752c****Specification**

---

**PPAT Antibody (Center) - Product Information**

Application	WB,E
Primary Accession	<a href="#">Q06203</a>
Other Accession	<a href="#">P35433</a>
Reactivity	Human
Predicted	Rat
Host	Rabbit
Clonality	Polyclonal
Isotype	Rabbit IgG
Calculated MW	57399
Antigen Region	175-205

**PPAT Antibody (Center) - Additional Information****Gene ID** 5471**Other Names**Amidophosphoribosyltransferase, ATase, Glutamine phosphoribosylpyrophosphate  
amidotransferase, GPAT, PPAT, GPAT**Target/Specificity**

This PPAT antibody is generated from rabbits immunized with a KLH conjugated synthetic peptide between 175-205 amino acids from the Central region of human PPAT.

**Dilution**

WB~~1:1000

**Format**

Purified polyclonal antibody supplied in PBS with 0.09% (W/V) sodium azide. This antibody is prepared by Saturated Ammonium Sulfate (SAS) precipitation followed by dialysis against PBS.

**Storage**

Maintain refrigerated at 2-8°C for up to 2 weeks. For long term storage store at -20°C in small aliquots to prevent freeze-thaw cycles.

**Precautions**

PPAT Antibody (Center) is for research use only and not for use in diagnostic or therapeutic procedures.

**PPAT Antibody (Center) - Protein Information****Name** PPAT

**Synonyms** GPAT {ECO:0000303|PubMed:8106516}

**Function** Catalyzes the formation of phosphoribosylamine from phosphoribosylpyrophosphate (PRPP) and glutamine.

**Tissue Location**

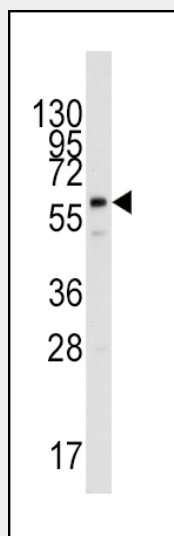
Ubiquitously expressed.

### PPAT Antibody (Center) - Protocols

Provided below are standard protocols that you may find useful for product applications.

- [Western Blot](#)
- [Blocking Peptides](#)
- [Dot Blot](#)
- [Immunohistochemistry](#)
- [Immunofluorescence](#)
- [Immunoprecipitation](#)
- [Flow Cytometry](#)
- [Cell Culture](#)

### PPAT Antibody (Center) - Images



Western blot analysis of anti-PPAT Antibody (Center) (Cat.#AP2752c) in HepG2 cell line lysates (35ug/lane). PPAT (arrow) was detected using the purified Pab.

### PPAT Antibody (Center) - Background

PPAT is a member of the purine/pyrimidine phosphoribosyltransferase family. This protein is a regulatory allosteric enzyme that catalyzes the first step of de novo purine nucleotide biosynthesis.

### PPAT Antibody (Center) - References

Bera, A.K., J. Biol. Chem. 274 (51), 36498-36504 (1999)  
Stanley, W., Cytogenet. Cell Genet. 22 (1-6), 228-231 (1978)