

U2AF1 Antibody (Center S70)
Purified Rabbit Polyclonal Antibody (Pab)
Catalog # AP2802c**Specification**

U2AF1 Antibody (Center S70) - Product Information

Application	WB, IHC-P,E
Primary Accession	Q01081
Other Accession	Q9D883 , A1A4K8 , P0DN76
Reactivity	Human
Predicted	Bovine, Mouse
Host	Rabbit
Clonality	Polyclonal
Isotype	Rabbit IgG
Calculated MW	27872
Antigen Region	55-83

U2AF1 Antibody (Center S70) - Additional Information**Gene ID** 102724594;7307**Other Names**

Splicing factor U2AF 35 kDa subunit, U2 auxiliary factor 35 kDa subunit, U2 small nuclear RNA auxiliary factor 1, U2 snRNP auxiliary factor small subunit, U2AF1, U2AF35, U2AFBP

Target/Specificity

This U2AF1 antibody is generated from rabbits immunized with a KLH conjugated synthetic peptide between 55-83 amino acids from the Central region of human U2AF1.

Dilution

WB~~1:1000
IHC-P~~1:50~100

Format

Purified polyclonal antibody supplied in PBS with 0.09% (W/V) sodium azide. This antibody is prepared by Saturated Ammonium Sulfate (SAS) precipitation followed by dialysis against PBS.

Storage

Maintain refrigerated at 2-8°C for up to 2 weeks. For long term storage store at -20°C in small aliquots to prevent freeze-thaw cycles.

Precautions

U2AF1 Antibody (Center S70) is for research use only and not for use in diagnostic or therapeutic procedures.

U2AF1 Antibody (Center S70) - Protein Information**Name** U2AF1

Synonyms U2AF35, U2AFBP

Function Plays a critical role in both constitutive and enhancer- dependent splicing by mediating protein-protein interactions and protein-RNA interactions required for accurate 3'-splice site selection. Recruits U2 snRNP to the branch point. Directly mediates interactions between U2AF2 and proteins bound to the enhancers and thus may function as a bridge between U2AF2 and the enhancer complex to recruit it to the adjacent intron.

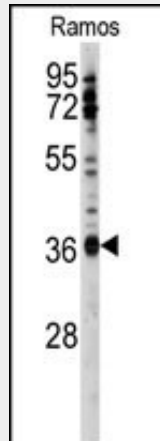
Cellular Location

Nucleus. Nucleus speckle

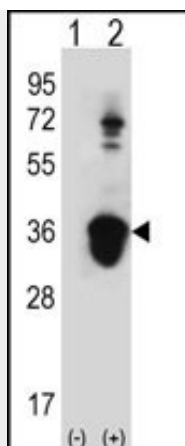
U2AF1 Antibody (Center S70) - Protocols

Provided below are standard protocols that you may find useful for product applications.

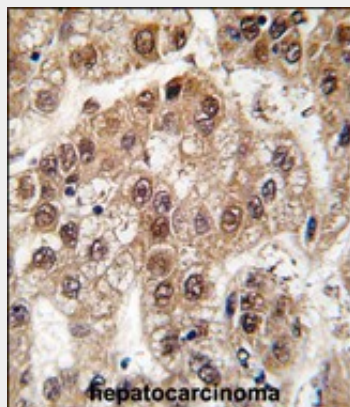
- [Western Blot](#)
- [Blocking Peptides](#)
- [Dot Blot](#)
- [Immunohistochemistry](#)
- [Immunofluorescence](#)
- [Immunoprecipitation](#)
- [Flow Cytometry](#)
- [Cell Culture](#)

U2AF1 Antibody (Center S70) - Images

Western blot analysis of anti-U2AF1 Antibody (Center S70) (Cat.#AP2802c) in Ramos cell line lysates (35ug/lane). U2AF1 (arrow) was detected using the purified Pab.



Western blot analysis of U2AF1 (arrow) using rabbit polyclonal U2AF1 Antibody (Center S70) (Cat.#AP2802c). 293 cell lysates (2 ug/lane) either nontransfected (Lane 1) or transiently transfected (Lane 2) with the U2AF1 gene.



Formalin-fixed and paraffin-embedded human hepatocarcinoma tissue reacted with U2AF1 antibody (Center S70), which was peroxidase-conjugated to the secondary antibody, followed by DAB staining. This data demonstrates the use of this antibody for immunohistochemistry; clinical relevance has not been evaluated.

U2AF1 Antibody (Center S70) - Background

U2AF1 belongs to the splicing factor SR family. U2 auxiliary factor, comprising a large and a small subunit, is a non-snRNP protein required for the binding of U2 snRNP to the pre-mRNA branch site. This gene encodes the small subunit which plays a critical role in both constitutive and enhancer-dependent RNA splicing by directly mediating interactions between the large subunit and proteins bound to the enhancers.

U2AF1 Antibody (Center S70) - References

Rino,J., Mol. Cell. Biol. 28 (9), 3045-3057 (2008) Little,J.T., J. Biol. Chem. 283 (13), 8145-8152 (2008) Pacheco,T.R., Mol. Cell. Biol. 26 (21), 8183-8190 (2006)