

**S100A11 Antibody (S6)**  
**Affinity Purified Rabbit Polyclonal Antibody (Pab)**  
**Catalog # AP2807b****Specification**

---

**S100A11 Antibody (S6) - Product Information**

Application	WB,E
Primary Accession	<a href="#">P31949</a>
Reactivity	Human
Host	Rabbit
Clonality	Polyclonal
Isotype	Rabbit IgG
Calculated MW	11740
Antigen Region	1-30

**S100A11 Antibody (S6) - Additional Information****Gene ID** 6282**Other Names**

Protein S100-A11, Calgizzarin, Metastatic lymph node gene 70 protein, MLN 70, Protein S100-C, S100 calcium-binding protein A11, Protein S100-A11, N-terminally processed, S100A11, MLN70, S100C

**Target/Specificity**

This S100A11 antibody is generated from rabbits immunized with a KLH conjugated synthetic peptide between 1-30 amino acids from human S100A11.

**Dilution**

WB~~1:1000

**Format**

Purified polyclonal antibody supplied in PBS with 0.09% (W/V) sodium azide. This antibody is purified through a protein A column, followed by peptide affinity purification.

**Storage**

Maintain refrigerated at 2-8°C for up to 2 weeks. For long term storage store at -20°C in small aliquots to prevent freeze-thaw cycles.

**Precautions**

S100A11 Antibody (S6) is for research use only and not for use in diagnostic or therapeutic procedures.

**S100A11 Antibody (S6) - Protein Information****Name** S100A11**Synonyms** MLN70, S100C

**Function** Facilitates the differentiation and the cornification of keratinocytes.

**Cellular Location**

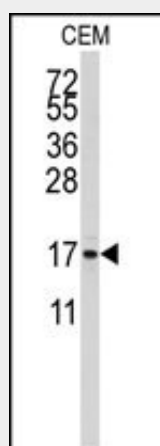
Cytoplasm. Nucleus

**S100A11 Antibody (S6) - Protocols**

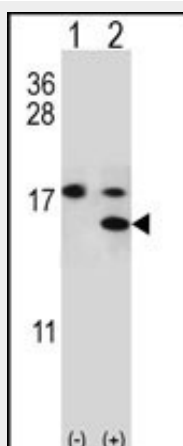
Provided below are standard protocols that you may find useful for product applications.

- [Western Blot](#)
- [Blocking Peptides](#)
- [Dot Blot](#)
- [Immunohistochemistry](#)
- [Immunofluorescence](#)
- [Immunoprecipitation](#)
- [Flow Cytometry](#)
- [Cell Culture](#)

**S100A11 Antibody (S6) - Images**



Western blot analysis of anti-S100A11 Antibody (S6) (Cat.#AP2807b) in CEM cell line lysates (35ug/lane). S100A11 (arrow) was detected using the purified Pab.



Western blot analysis of S100A11 (arrow) using rabbit polyclonal S100A11 Antibody (S6) (Cat.#AP2807b). 293 cell lysates (2 ug/lane) either nontransfected (Lane 1) or transiently

transfected (Lane 2) with the S100A11 gene.

#### **S100A11 Antibody (S6) - Background**

S100A11 is a member of the S100 family of proteins containing 2 EF-hand calcium-binding motifs. S100 proteins are localized in the cytoplasm and/or nucleus of a wide range of cells, and involved in the regulation of a number of cellular processes such as cell cycle progression and differentiation. This protein may function in motility, invasion, and tubulin polymerization. Chromosomal rearrangements and altered expression of S100A11 gene have been implicated in tumor metastasis.

#### **S100A11 Antibody (S6) - References**

Fernandez-Fernandez,M.R., Protein Sci. 17 (10), 1663-1670 (2008)  
Kouno,T., J. Pept. Sci. 14 (10), 1129-1138 (2008)  
Cecil,D.L., J. Immunol. 180 (12), 8378-8385 (2008)