

RFC5 Antibody (Center R185)
Purified Rabbit Polyclonal Antibody (Pab)
Catalog # AP2812c**Specification**

RFC5 Antibody (Center R185) - Product Information

Application	WB, FC,E
Primary Accession	P40937
Reactivity	Human, Rat
Host	Rabbit
Clonality	Polyclonal
Isotype	Rabbit IgG
Calculated MW	38497
Antigen Region	170-200

RFC5 Antibody (Center R185) - Additional Information**Gene ID** 5985**Other Names**

Replication factor C subunit 5, Activator 1 36 kDa subunit, A1 36 kDa subunit, Activator 1 subunit 5, Replication factor C 36 kDa subunit, RF-C 36 kDa subunit, RFC36, RFC5

Target/Specificity

This RFC5 antibody is generated from rabbits immunized with a KLH conjugated synthetic peptide between 170-200 amino acids from the Central region of human RFC5.

Dilution

WB~~1:1000

FC~~1:10~50

Format

Purified polyclonal antibody supplied in PBS with 0.09% (W/V) sodium azide. This antibody is prepared by Saturated Ammonium Sulfate (SAS) precipitation followed by dialysis against PBS.

Storage

Maintain refrigerated at 2-8°C for up to 2 weeks. For long term storage store at -20°C in small aliquots to prevent freeze-thaw cycles.

Precautions

RFC5 Antibody (Center R185) is for research use only and not for use in diagnostic or therapeutic procedures.

RFC5 Antibody (Center R185) - Protein Information**Name** RFC5**Function** The elongation of primed DNA templates by DNA polymerase delta and epsilon requires

the action of the accessory proteins proliferating cell nuclear antigen (PCNA) and activator 1.

Cellular Location

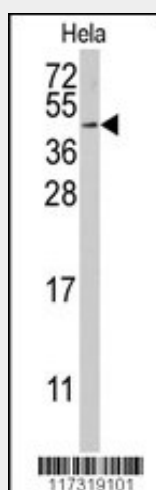
Nucleus.

RFC5 Antibody (Center R185) - Protocols

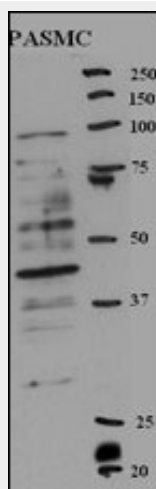
Provided below are standard protocols that you may find useful for product applications.

- [Western Blot](#)
- [Blocking Peptides](#)
- [Dot Blot](#)
- [Immunohistochemistry](#)
- [Immunofluorescence](#)
- [Immunoprecipitation](#)
- [Flow Cytometry](#)
- [Cell Culture](#)

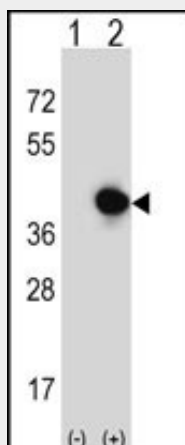
RFC5 Antibody (Center R185) - Images



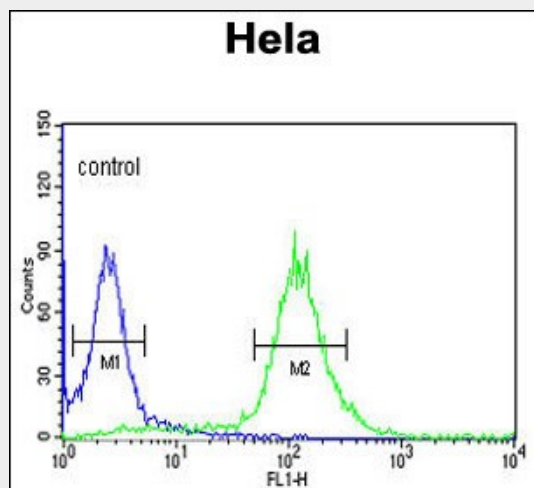
Western blot analysis of anti-RFC5 Antibody (Center R185) (Cat.#AP2812c) in HeLa cell line lysates (35ug/lane). RFC5 (arrow) was detected using the purified Pab.



Western blot analysis of anti-RFC5 Antibody (Center R185) (Cat.#AP2812c) in rat PASM cell line lysates (35ug/lane). RFC5(arrow) was detected using the purified Pab(Provided by Hirotaka Ata).



Western blot analysis of RFC5 (arrow) using rabbit polyclonal RFC5 Antibody (Center R185) (Cat.#AP2812c). 293 cell lysates (2 ug/lane) either nontransfected (Lane 1) or transiently transfected (Lane 2) with the RFC5 gene.



RFC5 Antibody (Center R185) (Cat. #AP2812c) flow cytometric analysis of HeLa cells (right histogram) compared to a negative control cell (left histogram).FITC-conjugated goat-anti-rabbit secondary antibodies were used for the analysis.

RFC5 Antibody (Center R185) - Background

The elongation of primed DNA templates by DNA polymerase delta and DNA polymerase epsilon requires the accessory proteins proliferating cell nuclear antigen (PCNA) and replication factor C (RFC). RFC, also named activator 1, is a protein complex consisting of five distinct subunits of 140, 40, 38, 37, and 36 kD. RFC5 is the 36 kD subunit. This subunit can interact with the C-terminal region of PCNA. It forms a core complex with the 38 and 40 kDa subunits. The core complex possesses DNA-dependent ATPase activity, which was found to be stimulated by PCNA in an in vitro system.

RFC5 Antibody (Center R185) - References

Stelzl,U., Cell 122 (6), 957-968 (2005)
Andersen,J.S., Nature 433 (7021), 77-83 (2005)