

**RFC3 Antibody (Center)**  
**Purified Rabbit Polyclonal Antibody (Pab)**  
**Catalog # AP2860c****Specification**

---

**RFC3 Antibody (Center) - Product Information**

Application	WB, FC,E
Primary Accession	<a href="#">P40938</a>
Other Accession	<a href="#">Q8R323</a> , <a href="#">Q2TBV1</a>
Reactivity	Human
Predicted	Bovine, Mouse
Host	Rabbit
Clonality	Polyclonal
Isotype	Rabbit IgG
Calculated MW	40556
Antigen Region	121-150

**RFC3 Antibody (Center) - Additional Information****Gene ID** 5983**Other Names**

Replication factor C subunit 3, Activator 1 38 kDa subunit, A1 38 kDa subunit, Activator 1 subunit 3, Replication factor C 38 kDa subunit, RF-C 38 kDa subunit, RFC38, RFC3

**Target/Specificity**

This RFC3 antibody is generated from rabbits immunized with a KLH conjugated synthetic peptide between 121-150 amino acids from the Central region of human RFC3.

**Dilution**

WB~~1:1000  
FC~~1:10~50

**Format**

Purified polyclonal antibody supplied in PBS with 0.09% (W/V) sodium azide. This antibody is prepared by Saturated Ammonium Sulfate (SAS) precipitation followed by dialysis against PBS.

**Storage**

Maintain refrigerated at 2-8°C for up to 2 weeks. For long term storage store at -20°C in small aliquots to prevent freeze-thaw cycles.

**Precautions**

RFC3 Antibody (Center) is for research use only and not for use in diagnostic or therapeutic procedures.

**RFC3 Antibody (Center) - Protein Information****Name** RFC3

**Function** The elongation of primed DNA templates by DNA polymerase delta and epsilon requires the action of the accessory proteins proliferating cell nuclear antigen (PCNA) and activator 1.

**Cellular Location**

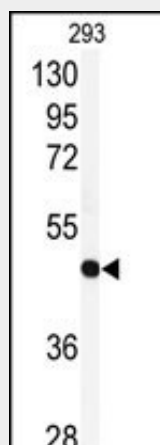
Nucleus.

**RFC3 Antibody (Center) - Protocols**

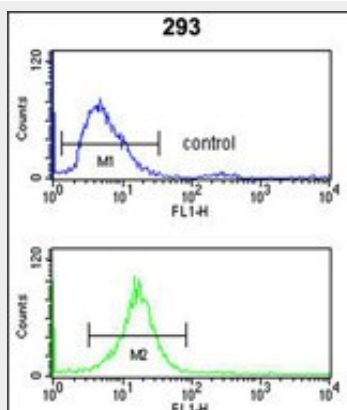
Provided below are standard protocols that you may find useful for product applications.

- [Western Blot](#)
- [Blocking Peptides](#)
- [Dot Blot](#)
- [Immunohistochemistry](#)
- [Immunofluorescence](#)
- [Immunoprecipitation](#)
- [Flow Cytometry](#)
- [Cell Culture](#)

**RFC3 Antibody (Center) - Images**



Western blot analysis of anti-RFC3 Antibody (Center) (Cat.#AP2860c) in 293 cell line lysates (35ug/lane). RFC3 (arrow) was detected using the purified Pab.



RFC3 Antibody (Center) (Cat. #AP2860c) flow cytometry analysis of 293 cells (bottom histogram) compared to a negative control cell (top histogram). FITC-conjugated goat-anti-rabbit secondary antibodies were used for the analysis.

**RFC3 Antibody (Center) - Background**

The elongation of primed DNA templates by DNA polymerase delta and DNA polymerase epsilon requires the accessory proteins proliferating cell nuclear antigen (PCNA) and replication factor C (RFC). RFC, also named activator 1, is a protein complex consisting of five distinct subunits of 140, 40, 38, 37, and 36 kDa.

**RFC3 Antibody (Center) - References**

Rauen M., Burtelow M.A.J. Biol. Chem. 275:29767-29771(2000)