

**DCC1 Antibody (N-term)**  
**Purified Rabbit Polyclonal Antibody (Pab)**  
**Catalog # AP2874a****Specification**

---

**DCC1 Antibody (N-term) - Product Information**

Application	WB, IHC-P,E
Primary Accession	<a href="#">Q9BVC3</a>
Other Accession	<a href="#">Q14AI0</a>
Reactivity	Human
Predicted	Mouse
Host	Rabbit
Clonality	Polyclonal
Isotype	Rabbit IgG
Calculated MW	44825
Antigen Region	61-87

**DCC1 Antibody (N-term) - Additional Information****Gene ID** 79075**Other Names**

Sister chromatid cohesion protein DCC1, Defective in sister chromatid cohesion protein 1 homolog, DSCC1, DCC1

**Target/Specificity**

This DCC1 antibody is generated from rabbits immunized with a KLH conjugated synthetic peptide between 61-87 amino acids from the N-terminal region of human DCC1.

**Dilution**

WB~~1:1000  
IHC-P~~1:50~100

**Format**

Purified polyclonal antibody supplied in PBS with 0.09% (W/V) sodium azide. This antibody is prepared by Saturated Ammonium Sulfate (SAS) precipitation followed by dialysis against PBS.

**Storage**

Maintain refrigerated at 2-8°C for up to 2 weeks. For long term storage store at -20°C in small aliquots to prevent freeze-thaw cycles.

**Precautions**

DCC1 Antibody (N-term) is for research use only and not for use in diagnostic or therapeutic procedures.

**DCC1 Antibody (N-term) - Protein Information****Name** DSCC1

## Synonyms DCC1

**Function** Loads PCNA onto primed templates regulating velocity, spacing and restart activity of replication forks. May couple DNA replication to sister chromatid cohesion through regulation of the acetylation of the cohesin subunit SMC3.

## Cellular Location

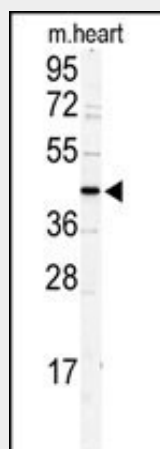
Nucleus.

## DCC1 Antibody (N-term) - Protocols

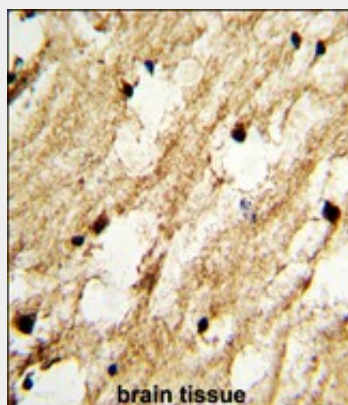
Provided below are standard protocols that you may find useful for product applications.

- [Western Blot](#)
- [Blocking Peptides](#)
- [Dot Blot](#)
- [Immunohistochemistry](#)
- [Immunofluorescence](#)
- [Immunoprecipitation](#)
- [Flow Cytometry](#)
- [Cell Culture](#)

## DCC1 Antibody (N-term) - Images



Western blot analysis of DCC1 antibody (N-term) (Cat.#AP2874a) in mouse heart tissue lysates (35ug/lane). DCC1 (arrow) was detected using the purified Pab.



Formalin-fixed and paraffin-embedded human brain tissue with DCC1 Antibody (N-term), which was peroxidase-conjugated to the secondary antibody, followed by DAB staining. This data demonstrates the use of this antibody for immunohistochemistry; clinical relevance has not been evaluated.

**DCC1 Antibody (N-term) - Background**

DCC1 is involved in sister chromatid cohesion establishment. The protein may act as a PCNA loader, loading PCNA onto primed templates.

**DCC1 Antibody (N-term) - References**

Clark H.F., Gurney A.L. Genome Res. 13:2265-2270(2003)

Merkle C.J., Karnitz L.M.J. Biol. Chem. 278:30051-30056(2003)