

ENOA Antibody (C-term)
Purified Rabbit Polyclonal Antibody (Pab)
Catalog # AP2879b**Specification**

ENOA Antibody (C-term) - Product Information

Application	IF, WB, IHC-P, FC,E
Primary Accession	P06733
Other Accession	Q4R5L2
Reactivity	Human, Mouse
Predicted	Monkey
Host	Rabbit
Clonality	Polyclonal
Isotype	Rabbit IgG
Calculated MW	47169
Antigen Region	405-434

ENOA Antibody (C-term) - Additional Information**Gene ID** 2023**Other Names**

Alpha-enolase, 2-phospho-D-glycerate hydro-lyase, C-myc promoter-binding protein, Enolase 1, MBP-1, MPB-1, Non-neural enolase, NNE, Phosphopyruvate hydratase, Plasminogen-binding protein, ENO1, ENO1L1, MBPB1, MPB1

Target/Specificity

This ENOA antibody is generated from rabbits immunized with a KLH conjugated synthetic peptide between 405-434 amino acids from the C-terminal region of human ENOA.

Dilution

IF~~1:10~50
WB~~1:1000
IHC-P~~1:10~50
FC~~1:10~50

Format

Purified polyclonal antibody supplied in PBS with 0.09% (W/V) sodium azide. This antibody is prepared by Saturated Ammonium Sulfate (SAS) precipitation followed by dialysis against PBS.

Storage

Maintain refrigerated at 2-8°C for up to 2 weeks. For long term storage store at -20°C in small aliquots to prevent freeze-thaw cycles.

Precautions

ENOA Antibody (C-term) is for research use only and not for use in diagnostic or therapeutic procedures.

ENOA Antibody (C-term) - Protein Information

Name ENO1**Synonyms** ENO1L1, MBPB1, MPB1

Function Glycolytic enzyme that catalyzes the conversion of 2-phosphoglycerate to phosphoenolpyruvate (PubMed:[29775581](#), PubMed:[1369209](#)). In addition to glycolysis, involved in various processes such as growth control, hypoxia tolerance and allergic responses (PubMed:[2005901](#), PubMed:[10802057](#), PubMed:[12666133](#), PubMed:[29775581](#)). May also function in the intravascular and pericellular fibrinolytic system due to its ability to serve as a receptor and activator of plasminogen on the cell surface of several cell-types such as leukocytes and neurons (PubMed:[12666133](#)). Stimulates immunoglobulin production (PubMed:[1369209](#)).

Cellular Location

Cytoplasm. Cell membrane. Cytoplasm, myofibril, sarcomere, M line. Note=Can translocate to the plasma membrane in either the homodimeric (alpha/alpha) or heterodimeric (alpha/gamma) form. ENO1 is localized to the M line

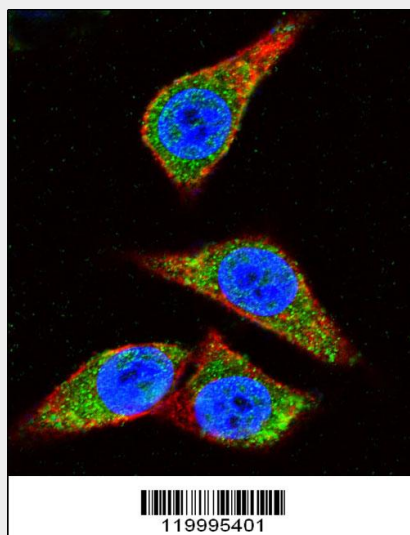
Tissue Location

The alpha/alpha homodimer is expressed in embryo and in most adult tissues. The alpha/beta heterodimer and the beta/beta homodimer are found in striated muscle, and the alpha/gamma heterodimer and the gamma/gamma homodimer in neurons

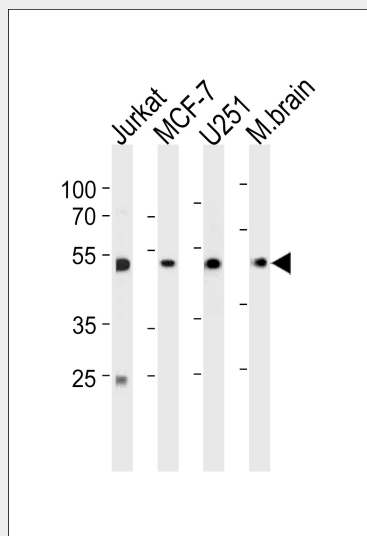
ENOA Antibody (C-term) - Protocols

Provided below are standard protocols that you may find useful for product applications.

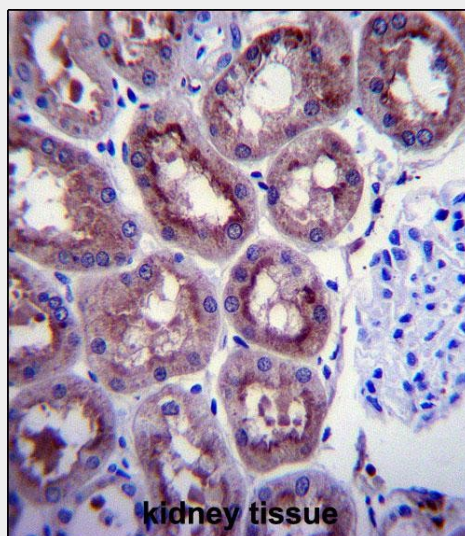
- [Western Blot](#)
- [Blocking Peptides](#)
- [Dot Blot](#)
- [Immunohistochemistry](#)
- [Immunofluorescence](#)
- [Immunoprecipitation](#)
- [Flow Cytometry](#)
- [Cell Culture](#)

ENOA Antibody (C-term) - Images

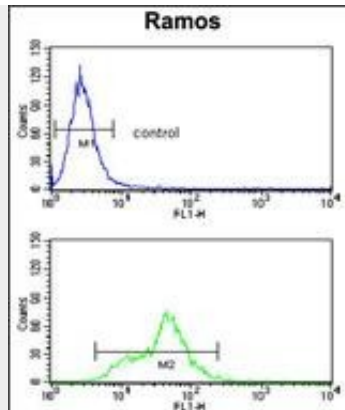
Confocal immunofluorescent analysis of ENOA Antibody (C-term)(Cat#AP2879b) with Hela cell followed by Alexa Fluor 488-conjugated goat anti-rabbit IgG (green).Actin filaments have been labeled with Alexa Fluor 555 phalloidin (red).DAPI was used to stain the cell nuclear (blue).



ENOA Antibody (C-term) (Cat. #AP2879b) western blot analysis in Jurkat,MCF-7,U251 cell line and mouse brain tissue lysates (35ug/lane).This demonstrates the ENOA antibody detected the ENOA protein (arrow).



ENOA Antibody (C-term) (Cat. #AP2879b)immunohistochemistry analysis in formalin fixed and paraffin embedded human kidney tissue followed by peroxidase conjugation of the secondary antibody and DAB staining.This data demonstrates the use of ENOA Antibody (C-term) for immunohistochemistry. Clinical relevance has not been evaluated.



ENOA Antibody (C-term) (Cat. #AP2879b) flow cytometry analysis of Ramos cells (bottom histogram) compared to a negative control cell (top histogram). FITC-conjugated goat-anti-rabbit secondary antibodies were used for the analysis.

ENOA Antibody (C-term) - Background

ENO1 is one of three enolase isoenzymes found in mammals; the protein alpha-enolase, a homodimeric soluble enzyme, and is also a shorter monomeric structural lens protein, tau-crystallin. The two proteins are made from the same message. The full length protein, the isoenzyme, is found in the cytoplasm. The shorter protein is produced from an alternative translation start, is localized to the nucleus, and has been found to bind to an element in the c-myc promoter.

ENOA Antibody (C-term) - References

Cappello, P., Int. J. Cancer 125 (3), 639-648 (2009)
Wygrecka, M., Blood 113 (22), 5588-5598 (2009)