

Phospho-Cdc25A(S79) Antibody
Affinity Purified Rabbit Polyclonal Antibody (Pab)
Catalog # AP3522a

Specification

Phospho-Cdc25A(S79) Antibody - Product Information

Application	DB,E
Primary Accession	P30304
Other Accession	P48965 , P48964 , A7MBD1
Reactivity	Human
Predicted	Bovine, Mouse, Rat
Host	Rabbit
Clonality	Polyclonal
Isotype	Rabbit IgG
Calculated MW	59087

Phospho-Cdc25A(S79) Antibody - Additional Information

Gene ID 993

Other Names

M-phase inducer phosphatase 1, Dual specificity phosphatase Cdc25A, CDC25A

Target/Specificity

This Cdc25A Antibody is generated from rabbits immunized with a KLH conjugated synthetic phosphopeptide corresponding to amino acid residues surrounding S79 of human Cdc25A.

Dilution

DB~~1:500

Format

Purified polyclonal antibody supplied in PBS with 0.09% (W/V) sodium azide. This antibody is purified through a protein A column, followed by peptide affinity purification.

Storage

Maintain refrigerated at 2-8°C for up to 2 weeks. For long term storage store at -20°C in small aliquots to prevent freeze-thaw cycles.

Precautions

Phospho-Cdc25A(S79) Antibody is for research use only and not for use in diagnostic or therapeutic procedures.

Phospho-Cdc25A(S79) Antibody - Protein Information

Name CDC25A

Function Tyrosine protein phosphatase which functions as a dosage- dependent inducer of mitotic progression (PubMed:[1836978](#), PubMed:[12676925](#), PubMed:[14559997](#), PubMed:[20360007](#)).

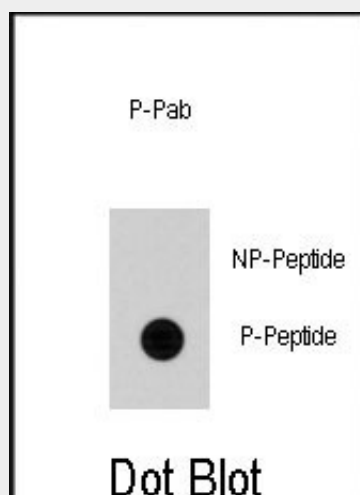
Directly dephosphorylates CDK1 and stimulates its kinase activity (PubMed:[20360007](#)). Also dephosphorylates CDK2 in complex with cyclin-E, in vitro (PubMed:[20360007](#)).

Phospho-Cdc25A(S79) Antibody - Protocols

Provided below are standard protocols that you may find useful for product applications.

- [Western Blot](#)
- [Blocking Peptides](#)
- [Dot Blot](#)
- [Immunohistochemistry](#)
- [Immunofluorescence](#)
- [Immunoprecipitation](#)
- [Flow Cytometry](#)
- [Cell Culture](#)

Phospho-Cdc25A(S79) Antibody - Images



Dot blot analysis of anti-Cdc25A Phospho-specific Pab (Cat.#AP3522a) on nitrocellulose membrane. 50ng of Phospho-peptide or Non Phospho-peptide per dot were adsorbed. Antibody working concentrations are 0.5ug per ml.

Phospho-Cdc25A(S79) Antibody - Background

CDC25A is a member of the CDC25 family of phosphatases. CDC25A is required for progression from G1 to the S phase of the cell cycle. It activates the cyclin-dependent kinase CDC2 by removing two phosphate groups. CDC25A is specifically degraded in response to DNA damage, which prevents cells with chromosomal abnormalities from progressing through cell division. CDC25A is an oncogene, although its exact role in oncogenesis has not been demonstrated.

Phospho-Cdc25A(S79) Antibody - References

Ray,D.,Cancer Res. 68 (5), 1251-1253 (2008)
Xu,X.,Int. J. Mol. Med. 21 (2), 145-152 (2008)
Kang,T.,Cancer Cell 13 (1), 36-47 (2008)