

**Phospho-IRS2(Y978) Antibody**  
**Affinity Purified Rabbit Polyclonal Antibody (Pab)**  
**Catalog # AP3596a**

**Specification**

---

**Phospho-IRS2(Y978) Antibody - Product Information**

|                   |                        |
|-------------------|------------------------|
| Application       | DB,E                   |
| Primary Accession | <a href="#">O9Y4H2</a> |
| Other Accession   | <a href="#">P81122</a> |
| Reactivity        | Human                  |
| Predicted         | Mouse                  |
| Host              | Rabbit                 |
| Clonality         | Polyclonal             |
| Isotype           | Rabbit IgG             |
| Calculated MW     | 137334                 |

**Phospho-IRS2(Y978) Antibody - Additional Information**

**Gene ID** 8660

**Other Names**

Insulin receptor substrate 2, IRS-2, IRS2

**Target/Specificity**

This IRS2 Antibody is generated from rabbits immunized with a KLH conjugated synthetic phosphopeptide corresponding to amino acid residues surrounding Y978 of human IRS2.

**Dilution**

DB~~1:500

**Format**

Purified polyclonal antibody supplied in PBS with 0.09% (W/V) sodium azide. This antibody is purified through a protein A column, followed by peptide affinity purification.

**Storage**

Maintain refrigerated at 2-8°C for up to 2 weeks. For long term storage store at -20°C in small aliquots to prevent freeze-thaw cycles.

**Precautions**

Phospho-IRS2(Y978) Antibody is for research use only and not for use in diagnostic or therapeutic procedures.

**Phospho-IRS2(Y978) Antibody - Protein Information**

**Name** IRS2

**Function** May mediate the control of various cellular processes by insulin.

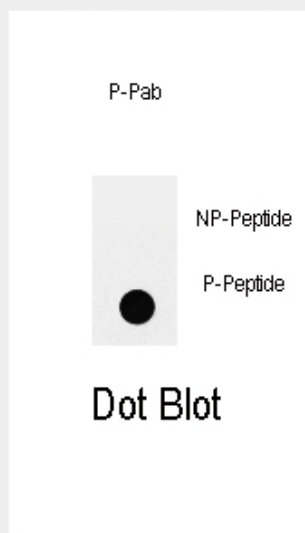
**Cellular Location**

Cytoplasm, cytosol.

**Phospho-IRS2(Y978) Antibody - Protocols**

Provided below are standard protocols that you may find useful for product applications.

- [Western Blot](#)
- [Blocking Peptides](#)
- [Dot Blot](#)
- [Immunohistochemistry](#)
- [Immunofluorescence](#)
- [Immunoprecipitation](#)
- [Flow Cytometry](#)
- [Cell Culture](#)

**Phospho-IRS2(Y978) Antibody - Images**

Dot blot analysis of anti-Phospho-IRS2-pY978 Antibody (Cat.#AP3596a) on nitrocellulose membrane. 50ng of Phospho-peptide or Non Phospho-peptide per dot were adsorbed. Antibody working concentrations are 0.5ug per ml.

**Phospho-IRS2(Y978) Antibody - Background**

Insulin receptor substrate 2, a cytoplasmic signaling molecule that mediates effects of insulin, insulin-like growth factor 1, and other cytokines by acting as a molecular adaptor between diverse receptor tyrosine kinases and downstream effectors. This protein is phosphorylated by the insulin receptor tyrosine kinase upon receptor stimulation, as well as by an interleukin 4 receptor-associated kinase in response to IL4 treatment.

**Phospho-IRS2(Y978) Antibody - References**

Hagg,D.A., Int. J. Mol. Med. 21 (6), 697-704 (2008)  
Platanias,L.C., J. Biol. Chem. 271 (1), 278-282 (1996)  
Sun,X.J., Nature 377 (6545), 173-177 (1995)