

Phospho-CLDN2(Y224) Antibody
Affinity Purified Rabbit Polyclonal Antibody (Pab)
Catalog # AP3639a

Specification

Phospho-CLDN2(Y224) Antibody - Product Information

Application	DB,E
Primary Accession	P57739
Other Accession	NP_065117
Reactivity	Human
Host	Rabbit
Clonality	Polyclonal
Isotype	Rabbit IgG
Calculated MW	24549

Phospho-CLDN2(Y224) Antibody - Additional Information

Gene ID 9075

Other Names

Claudin-2, SP82, CLDN2

Target/Specificity

This CLDN2 Antibody is generated from rabbits immunized with a KLH conjugated synthetic phosphopeptide corresponding to amino acid residues surrounding Y224 of human CLDN2.

Dilution

DB~~1:500

Format

Purified polyclonal antibody supplied in PBS with 0.09% (W/V) sodium azide. This antibody is purified through a protein A column, followed by peptide affinity purification.

Storage

Maintain refrigerated at 2-8°C for up to 2 weeks. For long term storage store at -20°C in small aliquots to prevent freeze-thaw cycles.

Precautions

Phospho-CLDN2(Y224) Antibody is for research use only and not for use in diagnostic or therapeutic procedures.

Phospho-CLDN2(Y224) Antibody - Protein Information

Name CLDN2

Function Plays a major role in tight junction-specific obliteration of the intercellular space, through calcium-independent cell-adhesion activity.

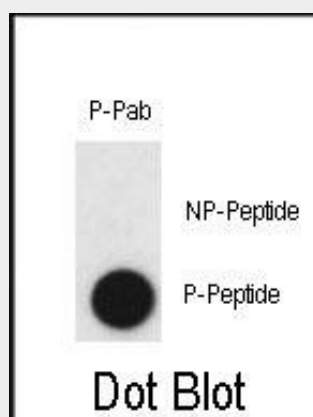
Cellular Location

Cell junction, tight junction {ECO:0000250|UniProtKB:O88552}. Cell membrane {ECO:0000250|UniProtKB:O88552}; Multi-pass membrane protein {ECO:0000250|UniProtKB:O88552}

Phospho-CLDN2(Y224) Antibody - Protocols

Provided below are standard protocols that you may find useful for product applications.

- [Western Blot](#)
- [Blocking Peptides](#)
- [Dot Blot](#)
- [Immunohistochemistry](#)
- [Immunofluorescence](#)
- [Immunoprecipitation](#)
- [Flow Cytometry](#)
- [Cell Culture](#)

Phospho-CLDN2(Y224) Antibody - Images

Dot blot analysis of anti-Phospho-CLDN2-pY224 Antibody (Cat.#AP3639a) on nitrocellulose membrane. 50ng of Phospho-peptide or Non Phospho-peptide per dot were adsorbed. Antibody working concentrations are 0.5ug per ml.

Phospho-CLDN2(Y224) Antibody - Background

Members of the claudin protein family, such as CLDN2, are expressed in an organ-specific manner and regulate the tissue-specific physiologic properties of tight junctions.

Phospho-CLDN2(Y224) Antibody - References

Morita,K., Proc. Natl. Acad. Sci. U.S.A. 96 (2), 511-516 (1999)
Furuse,M., J. Cell Biol. 141 (7), 1539-1550 (1998)