

Phospho-IL6ST(Y905) Antibody
Affinity Purified Rabbit Polyclonal Antibody (Pab)
Catalog # AP3663a

Specification

Phospho-IL6ST(Y905) Antibody - Product Information

Application	DB,E
Primary Accession	P40189
Reactivity	Human
Host	Rabbit
Clonality	Polyclonal
Isotype	Rabbit IgG
Calculated MW	103537

Phospho-IL6ST(Y905) Antibody - Additional Information

Gene ID 3572

Other Names

Interleukin-6 receptor subunit beta, IL-6 receptor subunit beta, IL-6R subunit beta, IL-6R-beta, IL-6RB, CDw130, Interleukin-6 signal transducer, Membrane glycoprotein 130, gp130, Oncostatin-M receptor subunit alpha, CD130, IL6ST

Target/Specificity

This IL6ST Antibody is generated from rabbits immunized with a KLH conjugated synthetic phosphopeptide corresponding to amino acid residues surrounding Y905 of human IL6ST.

Dilution

DB~~1:500

Format

Purified polyclonal antibody supplied in PBS with 0.09% (W/V) sodium azide. This antibody is purified through a protein A column, followed by peptide affinity purification.

Storage

Maintain refrigerated at 2-8°C for up to 2 weeks. For long term storage store at -20°C in small aliquots to prevent freeze-thaw cycles.

Precautions

Phospho-IL6ST(Y905) Antibody is for research use only and not for use in diagnostic or therapeutic procedures.

Phospho-IL6ST(Y905) Antibody - Protein Information

Name IL6ST ([HGNC:6021](#))

Function Signal-transducing molecule (PubMed:[2261637](#)). The receptor systems for IL6, LIF, OSM, CNTF, IL11, CTF1 and BSF3 can utilize IL6ST for initiating signal transmission. Binding of IL6 to IL6R

induces IL6ST homodimerization and formation of a high-affinity receptor complex, which activates the intracellular JAK-MAPK and JAK-STAT3 signaling pathways (PubMed:[2261637](#), PubMed:[19915009](#), PubMed:[23294003](#)). That causes phosphorylation of IL6ST tyrosine residues which in turn activates STAT3 (PubMed:[19915009](#), PubMed:[23294003](#), PubMed:[25731159](#)). In parallel, the IL6 signaling pathway induces the expression of two cytokine receptor signaling inhibitors, SOCS1 and SOCS3, which inhibit JAK and terminate the activity of the IL6 signaling pathway as a negative feedback loop (By similarity). Also activates the yes- associated protein 1 (YAP) and NOTCH pathways to control inflammation- induced epithelial regeneration, independently of STAT3 (By similarity). Acts as a receptor for the neuroprotective peptide humanin as part of a complex with IL27RA/WSX1 and CNTFR (PubMed:[19386761](#)). Mediates signals which regulate immune response, hematopoiesis, pain control and bone metabolism (By similarity). Has a role in embryonic development (By similarity). Essential for survival of motor and sensory neurons and for differentiation of astrocytes (By similarity). Required for expression of TRPA1 in nociceptive neurons (By similarity). Required for the maintenance of PTH1R expression in the osteoblast lineage and for the stimulation of PTH-induced osteoblast differentiation (By similarity). Required for normal trabecular bone mass and cortical bone composition (By similarity).

Cellular Location

[Isoform 1]: Cell membrane; Single-pass type I membrane protein

Tissue Location

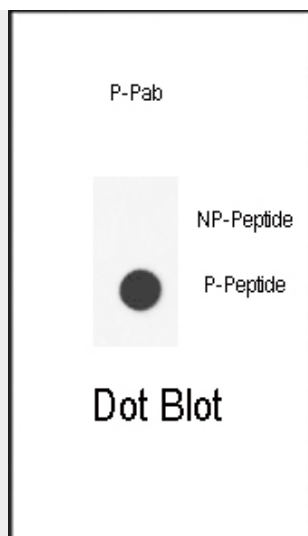
Found in all the tissues and cell lines examined (PubMed:2261637). Expression not restricted to IL6 responsive cells (PubMed:2261637).

Phospho-IL6ST(Y905) Antibody - Protocols

Provided below are standard protocols that you may find useful for product applications.

- [Western Blot](#)
- [Blocking Peptides](#)
- [Dot Blot](#)
- [Immunohistochemistry](#)
- [Immunofluorescence](#)
- [Immunoprecipitation](#)
- [Flow Cytometry](#)
- [Cell Culture](#)

Phospho-IL6ST(Y905) Antibody - Images



Dot blot analysis of anti-Phospho-IL6ST-Y905 Phospho-specific Pab (Cat. #AP3663a) on nitrocellulose membrane. 50ng of Phospho-peptide or Non Phospho-peptide per dot were adsorbed. Antibody working concentrations are 0.5ug per ml.

Phospho-IL6ST(Y905) Antibody - Background

IL6ST is a signal transducer shared by many cytokines, including interleukin 6 (IL6), ciliary neurotrophic factor (CNTF), leukemia inhibitory factor (LIF), and oncostatin M (OSM). This protein functions as a part of the cytokine receptor complex. The activation of this protein is dependent upon the binding of cytokines to their receptors. vIL6, a protein related to IL6 and encoded by the Kaposi sarcoma-associated herpesvirus, can bypass the interleukin 6 receptor (IL6R) and directly activate this protein.

Phospho-IL6ST(Y905) Antibody - References

Lehmann,U., et.al., J. Biol. Chem. 278 (1), 661-671 (2003)
Novotny-Diermayr,V., et.al., J. Biol. Chem. 277 (51), 49134-49142 (2002)