

**Phospho-LINGO-1(LRRN6A)(S596) Antibody**  
**Purified Rabbit Polyclonal Antibody (Pab)**  
**Catalog # AP3685a****Specification**

---

**Phospho-LINGO-1(LRRN6A)(S596) Antibody - Product Information**

Application	DB,E
Primary Accession	<a href="#">Q9D1T0</a>
Other Accession	<a href="#">Q9N008</a> , <a href="#">Q96FE5</a> , <a href="#">Q50L44</a>
Reactivity	Human
Predicted	Chicken, Monkey
Host	Rabbit
Clonality	Polyclonal
Isotype	Rabbit IgG
Calculated MW	69101

**Phospho-LINGO-1(LRRN6A)(S596) Antibody - Additional Information****Gene ID** 235402**Other Names**

Leucine-rich repeat and immunoglobulin-like domain-containing nogo receptor-interacting protein 1, Leucine-rich repeat neuronal protein 1, Leucine-rich repeat neuronal protein 6A, Lingo1, Lern1, Lrrn6a

**Target/Specificity**

This LINGO-1(LRRN6A) Antibody is generated from rabbits immunized with a KLH conjugated synthetic phosphopeptide corresponding to amino acid residues surrounding S596 of human LINGO-1(LRRN6A).

**Dilution**

DB~~1:500

**Format**

Purified polyclonal antibody supplied in PBS with 0.09% (W/V) sodium azide. This antibody is purified through a protein A column, followed by peptide affinity purification.

**Storage**

Maintain refrigerated at 2-8°C for up to 2 weeks. For long term storage store at -20°C in small aliquots to prevent freeze-thaw cycles.

**Precautions**

Phospho-LINGO-1(LRRN6A)(S596) Antibody is for research use only and not for use in diagnostic or therapeutic procedures.

**Phospho-LINGO-1(LRRN6A)(S596) Antibody - Protein Information****Name** Lingo1

**Synonyms** Lern1, Lrrn6a

**Function** Functional component of the Nogo receptor signaling complex (RTN4R/NGFR) in RhoA activation responsible for some inhibition of axonal regeneration by myelin-associated factors. Is also an important negative regulator of oligodendrocyte differentiation and axonal myelination (By similarity). Acts in conjunction with RTN4 and RTN4R in regulating neuronal precursor cell motility during cortical development.

**Cellular Location**

Cell membrane; Single-pass type I membrane protein

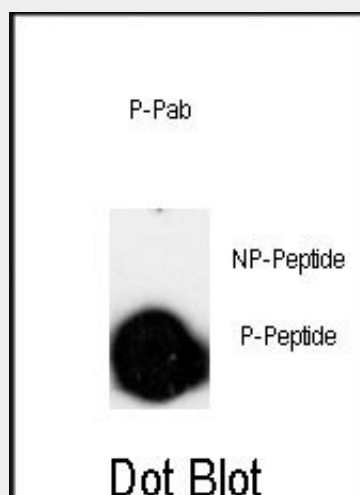
**Tissue Location**

Highly specific expression in the central nervous system. Predominant expression in neocortex, amygdala, hippocampus, thalamus and entorhinal cortex, with lower levels in cerebellum and basal nuclei.

**Phospho-LINGO-1(LRRN6A)(S596) Antibody - Protocols**

Provided below are standard protocols that you may find useful for product applications.

- [Western Blot](#)
- [Blocking Peptides](#)
- [Dot Blot](#)
- [Immunohistochemistry](#)
- [Immunofluorescence](#)
- [Immunoprecipitation](#)
- [Flow Cytometry](#)
- [Cell Culture](#)

**Phospho-LINGO-1(LRRN6A)(S596) Antibody - Images**

Dot blot analysis of anti-Phospho-LINGO-1(LRRN6A)-pS596 Pab (Cat. #AP3685a) on nitrocellulose membrane. 50ng of Phospho-peptide or Non Phospho-peptide per dot were adsorbed. Antibody working concentrations are 0.5ug per ml.

**Phospho-LINGO-1(LRRN6A)(S596) Antibody - Background**

LINGO-1 (LRR and Ig domain-containing Nogo Receptor interacting protein) is a nervous system-specific LRR-Ig-containing protein with an important role in CNS biology. LINGO-1 was

discovered in a sequence database search for human SLIT homologs that were selectively expressed in the brain. LINGO-1 is a transmembrane protein that is a component of the Nogo-66 receptor complex. It binds NgR1 and p75 and is an additional functional component of the NgR1/p75 signaling complex.

#### **Phospho-LINGO-1(LRRN6A)(S596) Antibody - References**

Mandai,K., et.al., Neuron 63 (5), 614-627 (2009)  
Homma,S., et.al., Gene Expr. Patterns 9 (1), 1-26 (2009)