

**APG3(cleaved) Antibody**  
**Affinity Purified Rabbit Polyclonal Antibody (Pab)**  
**Catalog # AP3740a****Specification**

---

**APG3(cleaved) Antibody - Product Information**

Application	DB,E
Primary Accession	<a href="#">Q9NT62</a>
Other Accession	<a href="#">Q6AZ50</a> , <a href="#">Q9CPX6</a> , <a href="#">Q6PFS7</a> , <a href="#">Q0VCL3</a>
Reactivity	Human
Predicted	Bovine, Zebrafish, Mouse, Rat
Host	Rabbit
Clonality	Polyclonal
Isotype	Rabbit IgG
Calculated MW	35864
Antigen Region	90-104

**APG3(cleaved) Antibody - Additional Information****Gene ID** 64422**Other Names**

Ubiquitin-like-conjugating enzyme ATG3, 632-, Autophagy-related protein 3, APG3-like, hApg3, Protein PC3-96, ATG3, APG3, APG3L

**Target/Specificity**

This APG3-cleaved Antibody is generated from rabbits immunized with a KLH conjugated synthetic peptide 90-104aa selected from human APG3.

**Dilution**

DB~~1:500

**Format**

Purified polyclonal antibody supplied in PBS with 0.09% (W/V) sodium azide. This antibody is purified through a protein A column, followed by peptide affinity purification.

**Storage**

Maintain refrigerated at 2-8°C for up to 2 weeks. For long term storage store at -20°C in small aliquots to prevent freeze-thaw cycles.

**Precautions**

APG3(cleaved) Antibody is for research use only and not for use in diagnostic or therapeutic procedures.

**APG3(cleaved) Antibody - Protein Information****Name** ATG3

**Synonyms** APG3, APG3L

**Function** E2 conjugating enzyme required for the cytoplasm to vacuole transport (Cvt), autophagy, and mitochondrial homeostasis. Responsible for the E2-like covalent binding of phosphatidylethanolamine to the C- terminal Gly of ATG8-like proteins (GABARAP, GABARAPL1, GABARAPL2 or MAP1LC3A). The ATG12-ATG5 conjugate plays a role of an E3 and promotes the transfer of ATG8-like proteins from ATG3 to phosphatidylethanolamine (PE). This step is required for the membrane association of ATG8-like proteins. The formation of the ATG8-phosphatidylethanolamine conjugates is essential for autophagy and for the cytoplasm to vacuole transport (Cvt). Preferred substrate is MAP1LC3A. Also acts as an autocatalytic E2-like enzyme, catalyzing the conjugation of ATG12 to itself, ATG12 conjugation to ATG3 playing a role in mitochondrial homeostasis but not in autophagy. ATG7 (E1-like enzyme) facilitates this reaction by forming an E1-E2 complex with ATG3. Promotes primary ciliogenesis by removing OFD1 from centriolar satellites via the autophagic pathway.

**Cellular Location**

Cytoplasm.

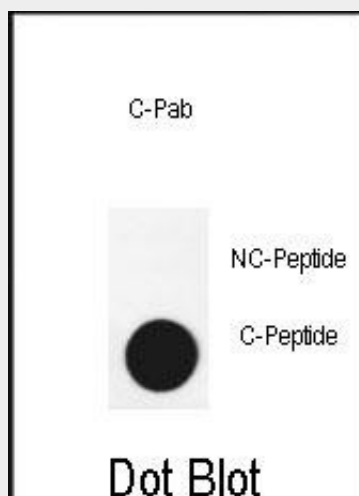
**Tissue Location**

Widely expressed, with a highest expression in heart, skeletal muscle, kidney, liver and placenta

**APG3(cleaved) Antibody - Protocols**

Provided below are standard protocols that you may find useful for product applications.

- [Western Blot](#)
- [Blocking Peptides](#)
- [Dot Blot](#)
- [Immunohistochemistry](#)
- [Immunofluorescence](#)
- [Immunoprecipitation](#)
- [Flow Cytometry](#)
- [Cell Culture](#)

**APG3(cleaved) Antibody - Images**

Dot blot analysis of anti-APG3-cleaved Pab (Cat. #AP3740a) on nitrocellulose membrane. 50ng of Cleaved-peptide or Non Cleaved-peptide per dot were adsorbed. Antibody working concentrations

are 0.6ug per ml.