

**Phospho-AMOT(S1041) Antibody**  
**Affinity Purified Rabbit Polyclonal Antibody (Pab)**  
**Catalog # AP3776a**

**Specification**

---

**Phospho-AMOT(S1041) Antibody - Product Information**

Application	DB,E
Primary Accession	<a href="#">Q4VCS5</a>
Other Accession	<a href="#">NP_001106962.1</a>
Reactivity	Human
Host	Rabbit
Clonality	Polyclonal
Isotype	Rabbit IgG
Calculated MW	118085

**Phospho-AMOT(S1041) Antibody - Additional Information**

**Gene ID** 154796

**Other Names**

Angiomotin, AMOT, KIAA1071

**Target/Specificity**

This AMOT Antibody is generated from rabbits immunized with a KLH conjugated synthetic phosphopeptide corresponding to amino acid residues surrounding S1041 of human AMOT.

**Dilution**

DB~~1:500

**Format**

Purified polyclonal antibody supplied in PBS with 0.09% (W/V) sodium azide. This antibody is purified through a protein A column, followed by peptide affinity purification.

**Storage**

Maintain refrigerated at 2-8°C for up to 2 weeks. For long term storage store at -20°C in small aliquots to prevent freeze-thaw cycles.

**Precautions**

Phospho-AMOT(S1041) Antibody is for research use only and not for use in diagnostic or therapeutic procedures.

**Phospho-AMOT(S1041) Antibody - Protein Information**

**Name** AMOT

**Synonyms** KIAA1071

**Function** Plays a central role in tight junction maintenance via the complex formed with

ARHGAP17, which acts by regulating the uptake of polarity proteins at tight junctions. Appears to regulate endothelial cell migration and tube formation. May also play a role in the assembly of endothelial cell-cell junctions.

#### Cellular Location

Cell junction, tight junction. Note=Localized on the cell surface. May act as a transmembrane protein

#### Tissue Location

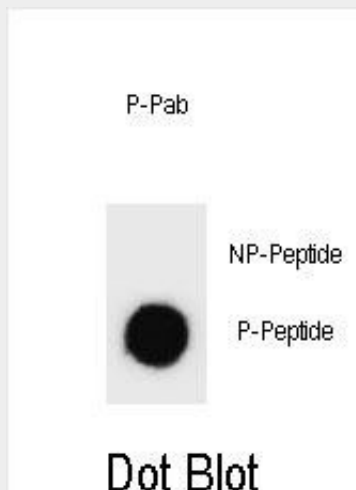
Expressed in placenta and skeletal muscle. Found in the endothelial cells of capillaries as well as larger vessels of the placenta.

### Phospho-AMOT(S1041) Antibody - Protocols

Provided below are standard protocols that you may find useful for product applications.

- [Western Blot](#)
- [Blocking Peptides](#)
- [Dot Blot](#)
- [Immunohistochemistry](#)
- [Immunofluorescence](#)
- [Immunoprecipitation](#)
- [Flow Cytometry](#)
- [Cell Culture](#)

### Phospho-AMOT(S1041) Antibody - Images



Dot blot analysis of Phospho-AMOT-S1041 Antibody Phospho-specific Pab (Cat. #AP3776a) on nitrocellulose membrane. 50ng of Phospho-peptide or Non Phospho-peptide per dot were adsorbed. Antibody working concentrations are 0.6ug per ml.

### Phospho-AMOT(S1041) Antibody - Background

This gene belongs to the motin family of angiostatin binding proteins characterized by conserved coiled-coil domains and C-terminal PDZ binding motifs. The encoded protein is expressed predominantly in endothelial cells of capillaries as well as larger vessels of the placenta where it may mediate the inhibitory effect of angiostatin on tube formation and the migration of endothelial

cells toward growth factors during the formation of new blood vessels. Alternative splicing results in multiple transcript variants encoding different isoforms.

#### **Phospho-AMOT(S1041) Antibody - References**

Bailey, S.D., et al. Diabetes Care 33(10):2250-2253(2010)  
Heller, B., et al. J. Biol. Chem. 285(16):12308-12320(2010)  
Talmud, P.J., et al. Am. J. Hum. Genet. 85(5):628-642(2009)  
Gagne, V., et al. Cell Motil. Cytoskeleton 66(9):754-768(2009)  
Zheng, Y., et al. Circ. Res. 105(3):260-270(2009)