

Phospho-IKKB(S733) Antibody
Affinity Purified Rabbit Polyclonal Antibody (Pab)
Catalog # AP3795a**Specification**

Phospho-IKKB(S733) Antibody - Product Information

Application	DB,E
Primary Accession	O14920
Other Accession	NP_001177649.1
Reactivity	Human
Host	Rabbit
Clonality	Polyclonal
Isotype	Rabbit IgG
Calculated MW	86564

Phospho-IKKB(S733) Antibody - Additional Information**Gene ID** 3551**Other Names**

Inhibitor of nuclear factor kappa-B kinase subunit beta, I-kappa-B-kinase beta, IKK-B, IKK-beta, IKBKB, I-kappa-B kinase 2, IKK2, Nuclear factor NF-kappa-B inhibitor kinase beta, NFKB1KB, IKBKB, IKKB

Target/Specificity

This IKKB Antibody is generated from rabbits immunized with a KLH conjugated synthetic phosphopeptide corresponding to amino acid residues surrounding S733 of human IKKB.

Dilution

DB~~1:500

Format

Purified polyclonal antibody supplied in PBS with 0.09% (W/V) sodium azide. This antibody is purified through a protein A column, followed by peptide affinity purification.

Storage

Maintain refrigerated at 2-8°C for up to 2 weeks. For long term storage store at -20°C in small aliquots to prevent freeze-thaw cycles.

Precautions

Phospho-IKKB(S733) Antibody is for research use only and not for use in diagnostic or therapeutic procedures.

Phospho-IKKB(S733) Antibody - Protein Information**Name** IKBKB**Synonyms** IKKB

Function Serine kinase that plays an essential role in the NF-kappa-B signaling pathway which is activated by multiple stimuli such as inflammatory cytokines, bacterial or viral products, DNA damages or other cellular stresses (PubMed:[20434986](#), PubMed:[20797629](#), PubMed:[21138416](#), PubMed:[9346484](#), PubMed:[30337470](#)). Acts as a part of the canonical IKK complex in the conventional pathway of NF-kappa-B activation (PubMed:[9346484](#)). Phosphorylates inhibitors of NF-kappa-B on 2 critical serine residues (PubMed:[9346484](#), PubMed:[20434986](#), PubMed:[20797629](#), PubMed:[21138416](#)). These modifications allow polyubiquitination of the inhibitors and subsequent degradation by the proteasome (PubMed:[9346484](#), PubMed:[20434986](#), PubMed:[20797629](#), PubMed:[21138416](#)). In turn, free NF-kappa-B is translocated into the nucleus and activates the transcription of hundreds of genes involved in immune response, growth control, or protection against apoptosis (PubMed:[9346484](#), PubMed:[20434986](#), PubMed:[20797629](#), PubMed:[21138416](#)). In addition to the NF-kappa-B inhibitors, phosphorylates several other components of the signaling pathway including NEMO/IKBKG, NF-kappa-B subunits RELA and NFkB1, as well as IKK-related kinases TBK1 and IKBKE (PubMed:[11297557](#), PubMed:[14673179](#), PubMed:[20410276](#), PubMed:[21138416](#)). IKK-related kinase phosphorylations may prevent the overproduction of inflammatory mediators since they exert a negative regulation on canonical IKKs (PubMed:[11297557](#), PubMed:[20410276](#), PubMed:[21138416](#)). Phosphorylates FOXO3, mediating the TNF-dependent inactivation of this pro-apoptotic transcription factor (PubMed:[15084260](#)). Also phosphorylates other substrates including NAA10, NCOA3, BCL10 and IRS1 (PubMed:[19716809](#), PubMed:[17213322](#)). Phosphorylates RIPK1 at 'Ser-25' which represses its kinase activity and consequently prevents TNF- mediated RIPK1-dependent cell death (By similarity). Phosphorylates the C-terminus of IRF5, stimulating IRF5 homodimerization and translocation into the nucleus (PubMed:[25326418](#)).

Cellular Location

Cytoplasm. Nucleus. Membrane raft. Note=Colocalized with DPP4 in membrane rafts.

Tissue Location

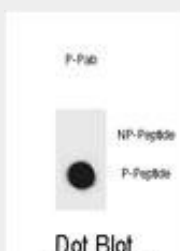
Highly expressed in heart, placenta, skeletal muscle, kidney, pancreas, spleen, thymus, prostate, testis and peripheral blood

Phospho-IKKB(S733) Antibody - Protocols

Provided below are standard protocols that you may find useful for product applications.

- [Western Blot](#)
- [Blocking Peptides](#)
- [Dot Blot](#)
- [Immunohistochemistry](#)
- [Immunofluorescence](#)
- [Immunoprecipitation](#)
- [Flow Cytometry](#)
- [Cell Culture](#)

Phospho-IKKB(S733) Antibody - Images



Dot blot analysis of IKKB Antibody (Phospho S733) Phospho-specific Pab (Cat. #AP3795a) on nitrocellulose membrane. 50ng of Phospho-peptide or Non Phospho-peptide per dot were adsorbed. Antibody working concentrations are 0.6ug per ml.

Phospho-IKKB(S733) Antibody - Background

NFKB1 (MIM 164011) or NFKB2 (MIM 164012) is bound to REL (MIM 164910), RELA (MIM 164014), or RELB (MIM 604758) to form the NFKB complex. The NFKB complex is inhibited by I-kappa-B proteins (NFKBIA, MIM 164008, or NFKBIB, MIM 604495), which inactivate NF-kappa-B by trapping it in the cytoplasm. Phosphorylation of serine residues on the I-kappa-B proteins by kinases (IKBKA, MIM 600664, or IKBKB) marks them for destruction via the ubiquitination pathway, thereby allowing activation of the NF-kappa-B complex. Activated NFKB complex translocates into the nucleus and binds DNA at kappa-B-binding motifs such as 5-prime GGGRNYYCC 3-prime or 5-prime HGGARNYYCC 3-prime (where H is A, C, or T; R is an A or G purine; and Y is a C or T pyrimidine).

Phospho-IKKB(S733) Antibody - References

Yatherajam, G., et al. J. Immunol. 185(5):2665-2669(2010) Kenneth, N.S., et al. EMBO J. 29(17):2966-2978(2010) Zhao, M., et al. J. Biol. Chem. 285(32):24372-24380(2010) Niida, M., et al. Mol. Immunol. 47(14):2378-2387(2010) Schuurhof, A., et al. Pediatr. Pulmonol. 45(6):608-613(2010)