

Phospho-MYPT1 (Thr696) Antibody
Purified Rabbit Polyclonal Antibody (Pab)
Catalog # AP3914a**Specification**

Phospho-MYPT1 (Thr696) Antibody - Product Information

Application	WB,E
Primary Accession	O14974
Other Accession	Q90623 , Q6DRG7 , Q9DBR7 , Q10728
Reactivity	Mouse
Predicted	Chicken, Zebrafish, Rat
Host	Rabbit
Clonality	polyclonal
Isotype	Rabbit IgG
Calculated MW	115281

Phospho-MYPT1 (Thr696) Antibody - Additional Information**Gene ID** 4659**Other Names**

Protein phosphatase 1 regulatory subunit 12A, Myosin phosphatase-targeting subunit 1, Myosin phosphatase target subunit 1, Protein phosphatase myosin-binding subunit, PPP1R12A, MBS, MYPT1

Target/Specificity

This Phospho-MYPT1 (Thr696) antibody is generated from a rabbit immunized with a KLH conjugated synthetic peptide between 669-702 amino acids from human MYPT1.

Dilution

WB~~1:500

Format

Purified polyclonal antibody supplied in PBS with 0.09% (W/V) sodium azide. This antibody is purified through a protein A column, followed by peptide affinity purification.

Storage

Maintain refrigerated at 2-8°C for up to 2 weeks. For long term storage store at -20°C in small aliquots to prevent freeze-thaw cycles.

Precautions

Phospho-MYPT1 (Thr696) Antibody is for research use only and not for use in diagnostic or therapeutic procedures.

Phospho-MYPT1 (Thr696) Antibody - Protein Information**Name** PPP1R12A ([HGNC:7618](#))

Function Key regulator of protein phosphatase 1C (PPP1C). Mediates binding to myosin. As part of the PPP1C complex, involved in dephosphorylation of PLK1. Capable of inhibiting HIF1AN-dependent suppression of HIF1A activity.

Cellular Location

Cytoplasm. Cytoplasm, cytoskeleton, stress fiber. Note=Also along actomyosin filaments

Tissue Location

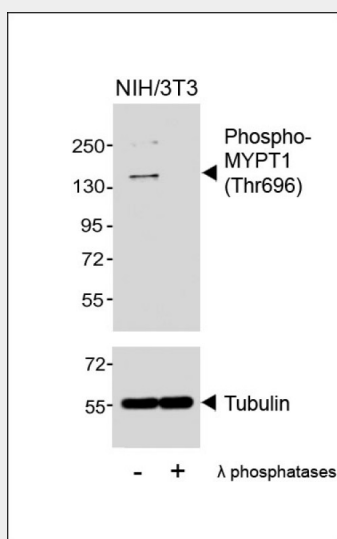
Expressed in striated muscles, specifically in type 2a fibers (at protein level).

Phospho-MYPT1 (Thr696) Antibody - Protocols

Provided below are standard protocols that you may find useful for product applications.

- [Western Blot](#)
- [Blocking Peptides](#)
- [Dot Blot](#)
- [Immunohistochemistry](#)
- [Immunofluorescence](#)
- [Immunoprecipitation](#)
- [Flow Cytometry](#)
- [Cell Culture](#)

Phospho-MYPT1 (Thr696) Antibody - Images



Western blot analysis of lysates from NIH/3T3 cell line, untreated or treated with λ phosphatases, 30min, using Phospho-MYPT1 (Thr696) Antibody (upper) or Tubulin (lower).

Phospho-MYPT1 (Thr696) Antibody - Background

Key regulator of protein phosphatase 1C (PPP1C). Mediates binding to myosin. As part of the PPP1C complex, involved in dephosphorylation of PLK1. Capable of inhibiting HIF1AN- dependent suppression of HIF1A activity.

Phospho-MYPT1 (Thr696) Antibody - References

Takahashi N.,et al.Genomics 44:150-152(1997).

Guo J.H.,et al.Submitted (DEC-2001) to the EMBL/GenBank/DDBJ databases.

Xia D.,et al.Submitted (SEP-2003) to the EMBL/GenBank/DDBJ databases.

Ota T.,et al.Nat. Genet. 36:40-45(2004).

Scherer S.E.,et al.Nature 440:346-351(2006).