

LUZP1 Antibody (C-term)
Affinity Purified Rabbit Polyclonal Antibody (Pab)
Catalog # AP4711b

Specification

LUZP1 Antibody (C-term) - Product Information

Application	WB, FC,E
Primary Accession	Q86V48
Reactivity	Human
Host	Rabbit
Clonality	Polyclonal
Isotype	Rabbit IgG
Calculated MW	120275
Antigen Region	1042-1070

LUZP1 Antibody (C-term) - Additional Information

Gene ID 7798

Other Names

Leucine zipper protein 1, LUZP1

Target/Specificity

This LUZP1 antibody is generated from rabbits immunized with a KLH conjugated synthetic peptide between 1042-1070 amino acids from the C-terminal region of human LUZP1.

Dilution

WB~~1:1000

FC~~1:10~50

Format

Purified polyclonal antibody supplied in PBS with 0.09% (W/V) sodium azide. This antibody is purified through a protein A column, followed by peptide affinity purification.

Storage

Maintain refrigerated at 2-8°C for up to 2 weeks. For long term storage store at -20°C in small aliquots to prevent freeze-thaw cycles.

Precautions

LUZP1 Antibody (C-term) is for research use only and not for use in diagnostic or therapeutic procedures.

LUZP1 Antibody (C-term) - Protein Information

Name LUZP1

Cellular Location

Cytoplasm, cytoskeleton, microtubule organizing center, centrosome. Nucleus

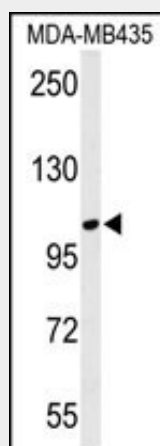
{ECO:0000250|UniProtKB:Q9ESV1}. Note=Also detected in soma and dendrites of neurons.
{ECO:0000250|UniProtKB:Q9ESV1}

LUZP1 Antibody (C-term) - Protocols

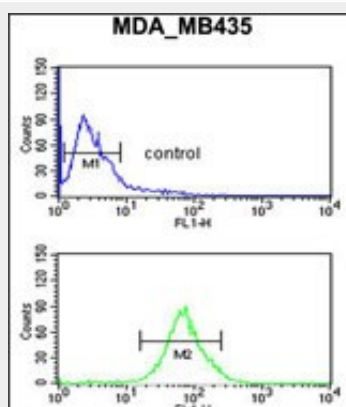
Provided below are standard protocols that you may find useful for product applications.

- [Western Blot](#)
- [Blocking Peptides](#)
- [Dot Blot](#)
- [Immunohistochemistry](#)
- [Immunofluorescence](#)
- [Immunoprecipitation](#)
- [Flow Cytometry](#)
- [Cell Culture](#)

LUZP1 Antibody (C-term) - Images



Western blot analysis of LUZP1 Antibody (C-term) (Cat. #AP4711b) in MDA-MB435 cell line lysates (35ug/lane). LUZP1 (arrow) was detected using the purified Pab.



LUZP1 Antibody (C-term) (Cat. #AP4711b) flow cytometric analysis of MDA-MB435 cells (bottom histogram) compared to a negative control cell (top histogram). FITC-conjugated goat-anti-rabbit secondary antibodies were used for the analysis.

LUZP1 Antibody (C-term) - Background

LUZP1 encodes a protein that contains a leucine zipper motif. The exact function of the encoded protein is not known. In mice this gene affects neural tube closure.

LUZP1 Antibody (C-term) - References

Olsen, J.V., et al. Cell 127(3):635-648(2006)
Jikuya, H., et al. DNA Res. 10(1):49-57(2003)
Sun, D.S., et al. Genomics 36(1):54-62(1996)