

**CP054 Antibody (C-term)**  
**Affinity Purified Rabbit Polyclonal Antibody (Pab)**  
**Catalog # AP4759b**

**Specification**

---

**CP054 Antibody (C-term) - Product Information**

Application	WB, FC,E
Primary Accession	<a href="#">Q6UWD8</a>
Reactivity	Human
Host	Rabbit
Clonality	Polyclonal
Isotype	Rabbit IgG
Calculated MW	24360
Antigen Region	170-198

**CP054 Antibody (C-term) - Additional Information**

**Gene ID** 283897

**Other Names**

Transmembrane protein C16orf54, C16orf54

**Target/Specificity**

This CP054 antibody is generated from rabbits immunized with a KLH conjugated synthetic peptide between 170-198 amino acids from the C-terminal region of human CP054.

**Dilution**

WB~~1:1000

FC~~1:10~50

**Format**

Purified polyclonal antibody supplied in PBS with 0.09% (W/V) sodium azide. This antibody is purified through a protein A column, followed by peptide affinity purification.

**Storage**

Maintain refrigerated at 2-8°C for up to 2 weeks. For long term storage store at -20°C in small aliquots to prevent freeze-thaw cycles.

**Precautions**

CP054 Antibody (C-term) is for research use only and not for use in diagnostic or therapeutic procedures.

**CP054 Antibody (C-term) - Protein Information**

**Name** C16orf54

**Cellular Location**

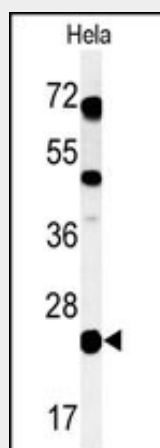
Membrane; Single-pass membrane protein

## CP054 Antibody (C-term) - Protocols

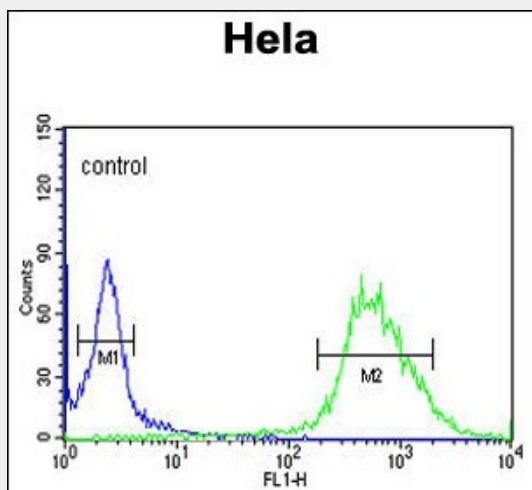
Provided below are standard protocols that you may find useful for product applications.

- [Western Blot](#)
- [Blocking Peptides](#)
- [Dot Blot](#)
- [Immunohistochemistry](#)
- [Immunofluorescence](#)
- [Immunoprecipitation](#)
- [Flow Cytometry](#)
- [Cell Culture](#)

## CP054 Antibody (C-term) - Images



Western blot analysis of CP054 Antibody (C-term) (Cat. #AP4759b) in HeLa cell line lysates (35ug/lane). CP054 (arrow) was detected using the purified Pab.



CP054 Antibody (C-term) (Cat. #AP4759b) flow cytometric analysis of HeLa cells (right histogram) compared to a negative control cell (left histogram). FITC-conjugated goat-anti-rabbit secondary antibodies were used for the analysis.

## CP054 Antibody (C-term) - References

Clark, H.F., et al. Genome Res. 13(10):2265-2270(2003)  
Venter, J.C., et al. Science 291(5507):1304-1351(2001)  
Loftus, B.J., et al. Genomics 60(3):295-308(1999)