

**RNASEH2B Antibody (Center)**  
**Affinity Purified Rabbit Polyclonal Antibody (Pab)**  
**Catalog # AP4774c****Specification**

---

**RNASEH2B Antibody (Center) - Product Information**

Application	WB, IHC-P,E
Primary Accession	<a href="#">Q5TBB1</a>
Reactivity	Human
Host	Rabbit
Clonality	Polyclonal
Isotype	Rabbit IgG
Calculated MW	35139
Antigen Region	130-157

**RNASEH2B Antibody (Center) - Additional Information****Gene ID** 79621**Other Names**

Ribonuclease H2 subunit B, RNase H2 subunit B, Aicardi-Goutieres syndrome 2 protein, AGS2, Deleted in lymphocytic leukemia 8, Ribonuclease HI subunit B, RNASEH2B, DLEU8

**Target/Specificity**

This RNASEH2B antibody is generated from rabbits immunized with a KLH conjugated synthetic peptide between 130-157 amino acids from the Central region of human RNASEH2B.

**Dilution**

WB~~1:1000  
IHC-P~~1:50~100

**Format**

Purified polyclonal antibody supplied in PBS with 0.09% (W/V) sodium azide. This antibody is purified through a protein A column, followed by peptide affinity purification.

**Storage**

Maintain refrigerated at 2-8°C for up to 2 weeks. For long term storage store at -20°C in small aliquots to prevent freeze-thaw cycles.

**Precautions**

RNASEH2B Antibody (Center) is for research use only and not for use in diagnostic or therapeutic procedures.

**RNASEH2B Antibody (Center) - Protein Information****Name** RNASEH2B**Synonyms** DLEU8

**Function** Non catalytic subunit of RNase H2, an endonuclease that specifically degrades the RNA of RNA:DNA hybrids. Participates in DNA replication, possibly by mediating the removal of lagging-strand Okazaki fragment RNA primers during DNA replication. Mediates the excision of single ribonucleotides from DNA:RNA duplexes.

**Cellular Location**

Nucleus.

**Tissue Location**

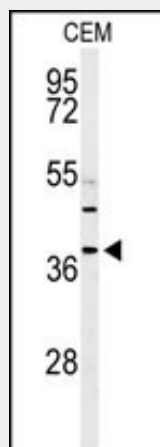
Widely expressed..

**RNASEH2B Antibody (Center) - Protocols**

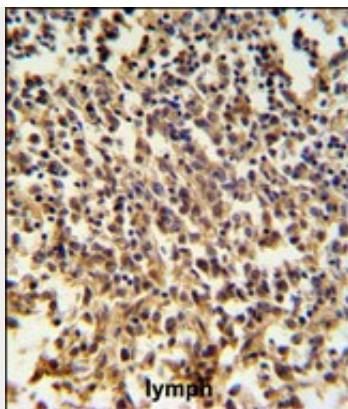
Provided below are standard protocols that you may find useful for product applications.

- [Western Blot](#)
- [Blocking Peptides](#)
- [Dot Blot](#)
- [Immunohistochemistry](#)
- [Immunofluorescence](#)
- [Immunoprecipitation](#)
- [Flow Cytometry](#)
- [Cell Culture](#)

**RNASEH2B Antibody (Center) - Images**



Western blot analysis of RNASEH2B Antibody (Center) (Cat. #AP4774c) in CEM cell line lysates (35ug/lane). RNASEH2B (arrow) was detected using the purified Pab.



RNASEH2B Antibody (Center) (Cat. #AP4774c) IHC analysis in formalin fixed and paraffin embedded human lymph tissue followed by peroxidase conjugation of the secondary antibody and DAB staining. This data demonstrates the use of the RNASEH2B Antibody (Center) for immunohistochemistry. Clinical relevance has not been evaluated.

#### **RNASEH2B Antibody (Center) - Background**

RNASEH2B is composed of a single catalytic subunit (A) and two non-catalytic subunits (B and C) and specifically degrades the RNA of RNA:DNA hybrids. RNASEH2B is the non-catalytic B subunit of RNase H2, which is thought to play a role in DNA replication.

#### **RNASEH2B Antibody (Center) - References**

Crozat, K., et al. Immunol. Rev. 227(1):129-149(2009)  
Chon, H., et al. Nucleic Acids Res. 37(1):96-110(2009)  
Crow, Y.J., et al. Dev Med Child Neurol 50(6):410-416(2008)