

TELO2 Antibody (C-term)
Affinity Purified Rabbit Polyclonal Antibody (Pab)
Catalog # AP4808b**Specification**

TELO2 Antibody (C-term) - Product Information

Application	WB, IHC-P, FC,E
Primary Accession	Q9Y4R8
Reactivity	Human
Host	Rabbit
Clonality	Polyclonal
Isotype	Rabbit IgG
Calculated MW	91747
Antigen Region	786-812

TELO2 Antibody (C-term) - Additional Information**Gene ID** 9894**Other Names**

Telomere length regulation protein TEL2 homolog, Protein clk-2 homolog, hCLK2, TELO2, KIAA0683

Target/Specificity

This TELO2 antibody is generated from rabbits immunized with a KLH conjugated synthetic peptide between 786-812 amino acids from the C-terminal region of human TELO2.

DilutionWB~~1:1000
IHC-P~~1:50~100
FC~~1:10~50**Format**

Purified polyclonal antibody supplied in PBS with 0.09% (W/V) sodium azide. This antibody is purified through a protein A column, followed by peptide affinity purification.

Storage

Maintain refrigerated at 2-8°C for up to 2 weeks. For long term storage store at -20°C in small aliquots to prevent freeze-thaw cycles.

Precautions

TELO2 Antibody (C-term) is for research use only and not for use in diagnostic or therapeutic procedures.

TELO2 Antibody (C-term) - Protein Information**Name** TELO2**Synonyms** KIAA0683

Function Regulator of the DNA damage response (DDR). Part of the TTT complex that is required to stabilize protein levels of the phosphatidylinositol 3-kinase-related protein kinase (PIKK) family proteins. The TTT complex is involved in the cellular resistance to DNA damage stresses, like ionizing radiation (IR), ultraviolet (UV) and mitomycin C (MMC). Together with the TTT complex and HSP90 may participate in the proper folding of newly synthesized PIKKs. Promotes assembly, stabilizes and maintains the activity of mTORC1 and mTORC2 complexes, which regulate cell growth and survival in response to nutrient and hormonal signals. May be involved in telomere length regulation.

Cellular Location

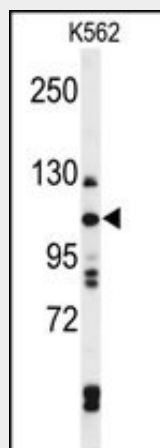
Cytoplasm. Membrane. Nucleus. Chromosome, telomere

TELO2 Antibody (C-term) - Protocols

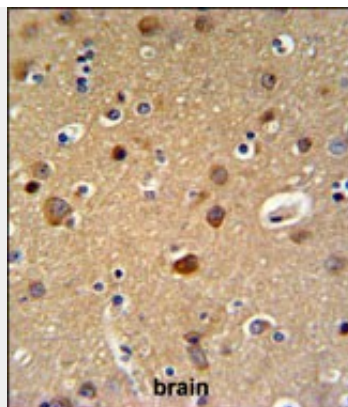
Provided below are standard protocols that you may find useful for product applications.

- [Western Blot](#)
- [Blocking Peptides](#)
- [Dot Blot](#)
- [Immunohistochemistry](#)
- [Immunofluorescence](#)
- [Immunoprecipitation](#)
- [Flow Cytometry](#)
- [Cell Culture](#)

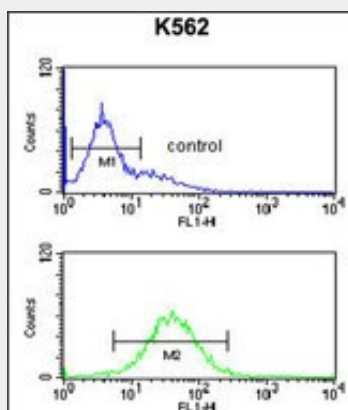
TELO2 Antibody (C-term) - Images



Western blot analysis of TELO2 Antibody (C-term) (Cat. #AP4808b) in K562 cell line lysates (35ug/lane). TELO2 (arrow) was detected using the purified Pab.



TELO2 Antibody (C-term) (Cat. #AP4808b) IHC analysis in formalin fixed and paraffin embedded brain tissue followed by peroxidase conjugation of the secondary antibody and DAB staining. This data demonstrates the use of the TELO2 Antibody (C-term) for immunohistochemistry. Clinical relevance has not been evaluated.



TELO2 Antibody (C-term) (Cat. #AP4808b) flow cytometric analysis of K562 cells (bottom histogram) compared to a negative control cell (top histogram). FITC-conjugated goat-anti-rabbit secondary antibodies were used for the analysis.

TELO2 Antibody (C-term) - Background

TELO2 is a protein that functions as an S-phase checkpoint protein in the cell cycle. The protein may also play a role in DNA repair.

TELO2 Antibody (C-term) - References

- Collis, S.J., et al. Mol. Cell 32(3):313-324(2008)
- Takai, H., et al. Cell 131(7):1248-1259(2007)
- Collis, S.J., et al. Nat. Cell Biol. 9(4):391-401(2007)