

TSPAN7 Antibody (Center)
Affinity Purified Rabbit Polyclonal Antibody (Pab)
Catalog # AP4874c**Specification**

TSPAN7 Antibody (Center) - Product Information

Application	WB, FC,E
Primary Accession	P41732
Other Accession	Q62283
Reactivity	Human
Predicted	Mouse
Host	Rabbit
Clonality	Polyclonal
Isotype	Rabbit IgG
Calculated MW	27574
Antigen Region	98-124

TSPAN7 Antibody (Center) - Additional Information**Gene ID** 7102**Other Names**

Tetraspanin-7, Tspan-7, Cell surface glycoprotein A15, Membrane component chromosome X surface marker 1, T-cell acute lymphoblastic leukemia-associated antigen 1, TALLA-1, Transmembrane 4 superfamily member 2, CD231, TSPAN7, A15, DXS1692E, MXS1, TM4SF2

Target/Specificity

This TSPAN7 antibody is generated from rabbits immunized with a KLH conjugated synthetic peptide between 98-124 amino acids from the Central region of human TSPAN7.

Dilution

WB~~1:1000
FC~~1:10~50

Format

Purified polyclonal antibody supplied in PBS with 0.09% (W/V) sodium azide. This antibody is purified through a protein A column, followed by peptide affinity purification.

Storage

Maintain refrigerated at 2-8°C for up to 2 weeks. For long term storage store at -20°C in small aliquots to prevent freeze-thaw cycles.

Precautions

TSPAN7 Antibody (Center) is for research use only and not for use in diagnostic or therapeutic procedures.

TSPAN7 Antibody (Center) - Protein Information

Name TSPAN7

Synonyms A15, DXS1692E, MXS1, TM4SF2

Function May be involved in cell proliferation and cell motility.

Cellular Location

Membrane; Multi-pass membrane protein.

Tissue Location

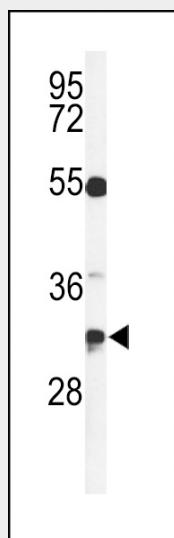
Not solely expressed in T-cells. Expressed in acute myelocytic leukemia cells of some patients

TSPAN7 Antibody (Center) - Protocols

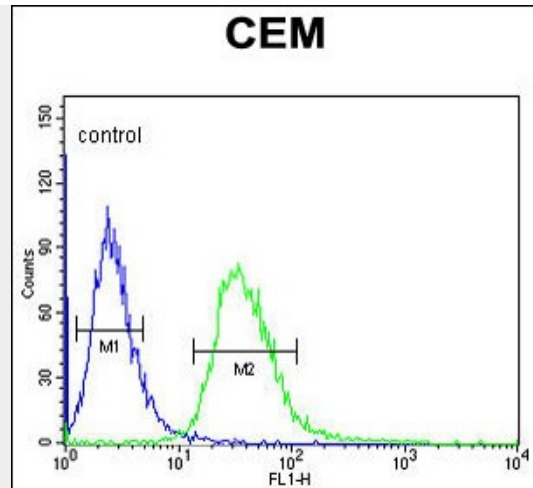
Provided below are standard protocols that you may find useful for product applications.

- [Western Blot](#)
- [Blocking Peptides](#)
- [Dot Blot](#)
- [Immunohistochemistry](#)
- [Immunofluorescence](#)
- [Immunoprecipitation](#)
- [Flow Cytometry](#)
- [Cell Culture](#)

TSPAN7 Antibody (Center) - Images



Western blot analysis of TSPAN7 Antibody (Center) (Cat. #AP4874c) in CEM cell line lysates (35ug/lane). TSPAN7 (arrow) was detected using the purified Pab.



TSPAN7 Antibody (Center) (Cat. #AP4874c) flow cytometric analysis of CEM cells (right histogram) compared to a negative control cell (left histogram). FITC-conjugated goat-anti-rabbit secondary antibodies were used for the analysis.

TSPAN7 Antibody (Center) - Background

TSPAN7 is a member of the transmembrane 4 superfamily, also known as the tetraspanin family. Most of these members are cell-surface proteins that are characterized by the presence of four hydrophobic domains. The proteins mediate signal transduction events that play a role in the regulation of cell development, activation, growth and motility. This encoded protein is a cell surface glycoprotein and may have a role in the control of neurite outgrowth. It is known to complex with integrins. This gene is associated with X-linked mental retardation and neuropsychiatric diseases such as Huntington's chorea, fragile X syndrome and myotonic dystrophy.

TSPAN7 Antibody (Center) - References

Radhakrishnan, Y., et al. Biol. Reprod. 81(4):647-656(2009)
Guilmatre, A., et al. Arch. Gen. Psychiatry 66(9):947-956(2009)
Noor, A., et al. Psychiatr. Genet. 19(3):154-155(2009)