

**ISLR Antibody (C-term)**  
**Affinity Purified Rabbit Polyclonal Antibody (Pab)**  
**Catalog # AP4877b****Specification**

---

**ISLR Antibody (C-term) - Product Information**

Application	WB, IHC-P, FC,E
Primary Accession	<a href="#">O14498</a>
Reactivity	Human
Host	Rabbit
Clonality	Polyclonal
Isotype	Rabbit IgG
Calculated MW	45997
Antigen Region	333-362

**ISLR Antibody (C-term) - Additional Information****Gene ID** 3671**Other Names**

Immunoglobulin superfamily containing leucine-rich repeat protein, ISLR

**Target/Specificity**

This ISLR antibody is generated from rabbits immunized with a KLH conjugated synthetic peptide between 333-362 amino acids from the C-terminal region of human ISLR.

**Dilution**

WB~~1:1000  
IHC-P~~1:50~100  
FC~~1:10~50

**Format**

Purified polyclonal antibody supplied in PBS with 0.09% (W/V) sodium azide. This antibody is purified through a protein A column, followed by peptide affinity purification.

**Storage**

Maintain refrigerated at 2-8°C for up to 2 weeks. For long term storage store at -20°C in small aliquots to prevent freeze-thaw cycles.

**Precautions**

ISLR Antibody (C-term) is for research use only and not for use in diagnostic or therapeutic procedures.

**ISLR Antibody (C-term) - Protein Information****Name** ISLR**Cellular Location**

Secreted.

#### Tissue Location

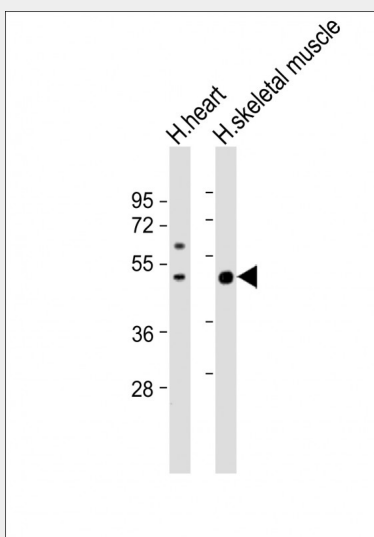
Expressed in various tissues including retina, heart, skeletal muscle, prostate, ovary, small intestine, thyroid, adrenal cortex, testis, stomach and spinal cord

#### ISLR Antibody (C-term) - Protocols

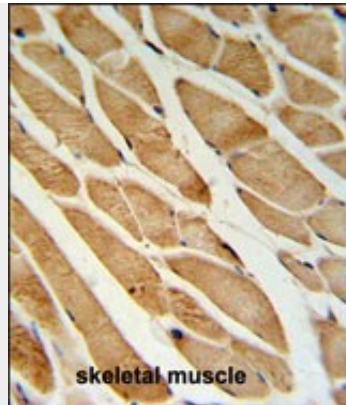
Provided below are standard protocols that you may find useful for product applications.

- [Western Blot](#)
- [Blocking Peptides](#)
- [Dot Blot](#)
- [Immunohistochemistry](#)
- [Immunofluorescence](#)
- [Immunoprecipitation](#)
- [Flow Cytometry](#)
- [Cell Culture](#)

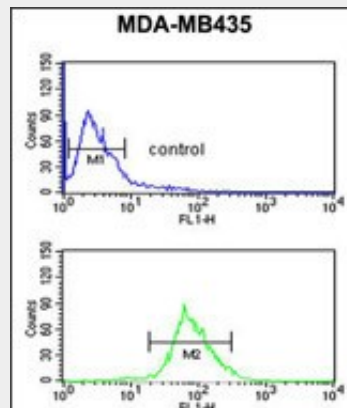
#### ISLR Antibody (C-term) - Images



All lanes : Anti-ISLR Antibody (C-term) at 1:1000 dilution Lane 1: human heart lysate Lane 2: human skeletal muscle lysate Lysates/proteins at 20 µg per lane. Secondary Goat Anti-Rabbit IgG, (H+L), Peroxidase conjugated at 1/10000 dilution. Predicted band size : 46 kDa Blocking/Dilution buffer: 5% NFDM/TBST.



ISLR Antibody (C-term) (Cat. #AP4877b) IHC analysis in formalin fixed and paraffin embedded skeletal muscle followed by peroxidase conjugation of the secondary antibody and DAB staining. This data demonstrates the use of the ISLR Antibody (C-term) for immunohistochemistry. Clinical relevance has not been evaluated.



ISLR Antibody (C-term) (Cat. #AP4877b) flow cytometric analysis of MDA-MB435 cells (bottom histogram) compared to a negative control cell (top histogram). FITC-conjugated goat-anti-rabbit secondary antibodies were used for the analysis.

#### ISLR Antibody (C-term) - References

Clark, H.F., et al. Genome Res. 13(10):2265-2270(2003)  
Nagasawa, A., et al. Genomics 61(1):37-43(1999)  
Nagasawa, A., et al. Genomics 44(3):273-279(1997)