

MILK2 Antibody (C-term)
Affinity Purified Rabbit Polyclonal Antibody (Pab)
Catalog # AP4901b

Specification

MILK2 Antibody (C-term) - Product Information

Application	WB, IHC-P, FC,E
Primary Accession	Q8IY33
Reactivity	Human
Host	Rabbit
Clonality	Polyclonal
Isotype	Rabbit IgG
Calculated MW	97502
Antigen Region	841-870

MILK2 Antibody (C-term) - Additional Information

Gene ID 79778

Other Names

MICAL-like protein 2, Junctional Rab13-binding protein, Molecule interacting with CasL-like 2, MICAL-L2, MICALL2, JRAB

Target/Specificity

This MILK2 antibody is generated from rabbits immunized with a KLH conjugated synthetic peptide between 841-870 amino acids from the C-terminal region of human MILK2.

Dilution

WB~~1:1000
IHC-P~~1:50~100
FC~~1:10~50

Format

Purified polyclonal antibody supplied in PBS with 0.09% (W/V) sodium azide. This antibody is purified through a protein A column, followed by peptide affinity purification.

Storage

Maintain refrigerated at 2-8°C for up to 2 weeks. For long term storage store at -20°C in small aliquots to prevent freeze-thaw cycles.

Precautions

MILK2 Antibody (C-term) is for research use only and not for use in diagnostic or therapeutic procedures.

MILK2 Antibody (C-term) - Protein Information

Name MICALL2

Synonyms JRAB

Function Effector of small Rab GTPases which is involved in junctional complexes assembly through the regulation of cell adhesion molecules transport to the plasma membrane and actin cytoskeleton reorganization. Regulates the endocytic recycling of occludins, claudins and E-cadherin to the plasma membrane and may thereby regulate the establishment of tight junctions and adherens junctions. In parallel, may regulate actin cytoskeleton reorganization directly through interaction with F-actin or indirectly through actinins and filamins. Most probably involved in the processes of epithelial cell differentiation, cell spreading and neurite outgrowth (By similarity).

Cellular Location

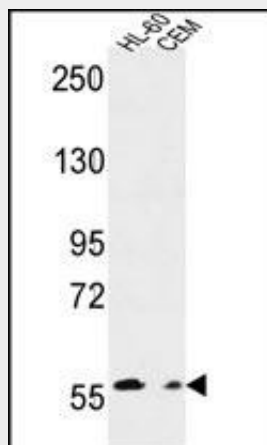
Cell membrane; Peripheral membrane protein. Cell junction, tight junction Recycling endosome. Cell projection Cytoplasm, cytoskeleton. Cytoplasm, cytosol

MILK2 Antibody (C-term) - Protocols

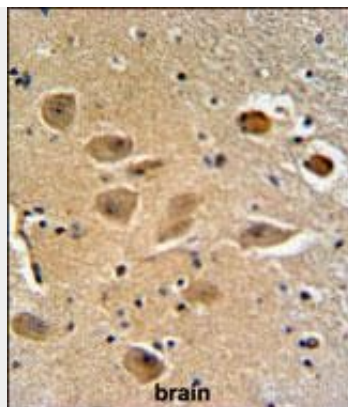
Provided below are standard protocols that you may find useful for product applications.

- [Western Blot](#)
- [Blocking Peptides](#)
- [Dot Blot](#)
- [Immunohistochemistry](#)
- [Immunofluorescence](#)
- [Immunoprecipitation](#)
- [Flow Cytometry](#)
- [Cell Culture](#)

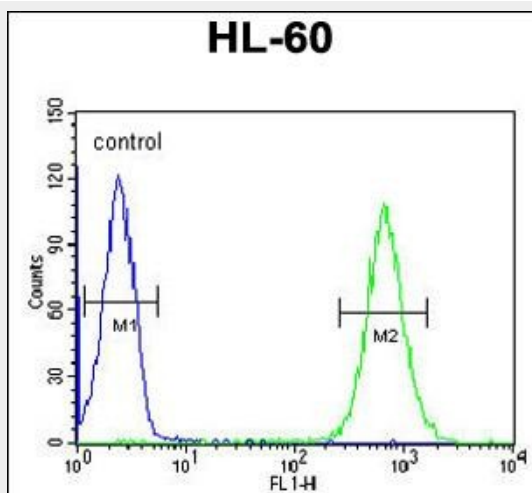
MILK2 Antibody (C-term) - Images



MILK2 Antibody (C-term) (Cat. #AP4901b) western blot analysis in HL-60,CEM cell line lysates (35ug/lane).This demonstrates the MILK2 antibody detected the MILK2 protein (arrow).



MILK2 Antibody (C-term) (Cat. #AP4901b) IHC analysis in formalin fixed and paraffin embedded human brain tissue followed by peroxidase conjugation of the secondary antibody and DAB staining. This data demonstrates the use of the MILK2 Antibody (C-term) for immunohistochemistry. Clinical relevance has not been evaluated.



MILK2 Antibody (C-term) (Cat. #AP4901b) flow cytometric analysis of HL-60 cells (right histogram) compared to a negative control cell (left histogram). FITC-conjugated goat-anti-rabbit secondary antibodies were used for the analysis.

MILK2 Antibody (C-term) - Background

MILK2 may be a cytoskeletal regulator.

MILK2 Antibody (C-term) - References

Kanda, I., et al. Oncogene 27(12):1687-1695(2008)
Teraï, T., et al. Mol. Biol. Cell 17(5):2465-2475(2006)
Clark, H.F., et al. Genome Res. 13(10):2265-2270(2003)
Terman, J.R., et al. Cell 109(7):887-900(2002)