

**NASP Antibody (N-term)**  
**Affinity Purified Rabbit Polyclonal Antibody (Pab)**  
**Catalog # AP4911a**

**Specification**

---

**NASP Antibody (N-term) - Product Information**

Application	WB, FC,E
Primary Accession	<a href="#">P49321</a>
Reactivity	Human
Host	Rabbit
Clonality	Polyclonal
Isotype	Rabbit IgG
Calculated MW	85238
Antigen Region	152-180

**NASP Antibody (N-term) - Additional Information**

**Gene ID** 4678

**Other Names**

Nuclear autoantigenic sperm protein, NASP, NASP

**Target/Specificity**

This NASP antibody is generated from rabbits immunized with a KLH conjugated synthetic peptide between 152-180 amino acids from the N-terminal region of human NASP.

**Dilution**

WB~~1:1000  
FC~~1:10~50

**Format**

Purified polyclonal antibody supplied in PBS with 0.09% (W/V) sodium azide. This antibody is prepared by Saturated Ammonium Sulfate (SAS) precipitation followed by dialysis against PBS.

**Storage**

Maintain refrigerated at 2-8°C for up to 2 weeks. For long term storage store at -20°C in small aliquots to prevent freeze-thaw cycles.

**Precautions**

NASP Antibody (N-term) is for research use only and not for use in diagnostic or therapeutic procedures.

**NASP Antibody (N-term) - Protein Information**

**Name** NASP

**Function** Required for DNA replication, normal cell cycle progression and cell proliferation. Forms a cytoplasmic complex with HSP90 and H1 linker histones and stimulates HSP90 ATPase activity.

NASP and H1 histone are subsequently released from the complex and translocate to the nucleus where the histone is released for binding to DNA.

**Cellular Location**

Cytoplasm {ECO:0000250|UniProtKB:Q99MD9}. Nucleus {ECO:0000250|UniProtKB:Q99MD9}

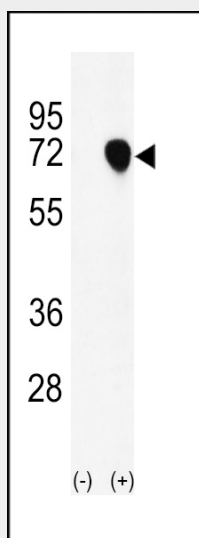
**Tissue Location**

Isoform 1 is testis- and sperm-specific.

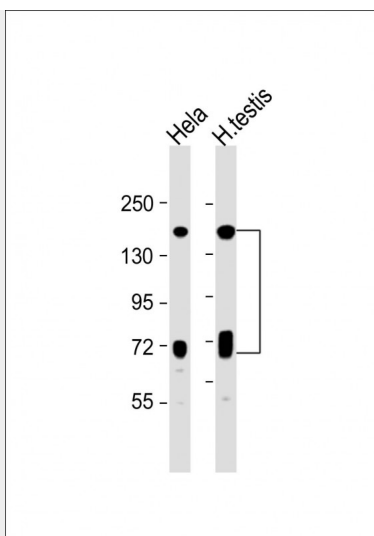
**NASP Antibody (N-term) - Protocols**

Provided below are standard protocols that you may find useful for product applications.

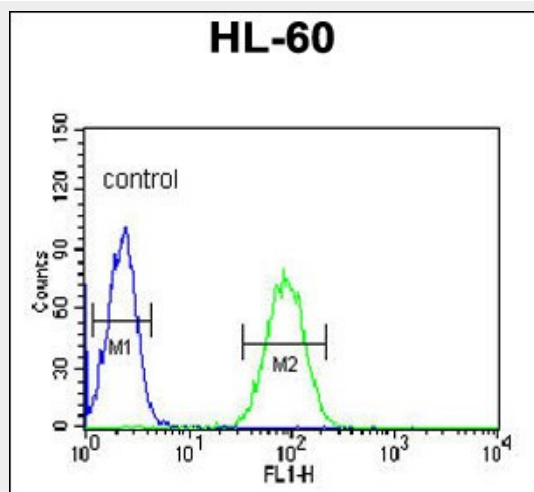
- [Western Blot](#)
- [Blocking Peptides](#)
- [Dot Blot](#)
- [Immunohistochemistry](#)
- [Immunofluorescence](#)
- [Immunoprecipitation](#)
- [Flow Cytometry](#)
- [Cell Culture](#)

**NASP Antibody (N-term) - Images**

Western blot analysis of NASP (arrow) using rabbit polyclonal NASP Antibody (N-term) (Cat. #AP4911a). 293 cell lysates (2 ug/lane) either nontransfected (Lane 1) or transiently transfected with the NASP gene (Lane 2) .



All lanes : Anti-NASP Antibody (N-term) at 1:1000 dilution Lane 1: HeLa whole cell lysate Lane 2: human testis lysate Lysates/proteins at 20 µg per lane. Secondary Goat Anti-Rabbit IgG, (H+L), Peroxidase conjugated at 1/10000 dilution. Predicted band size : 85 kDa Blocking/Dilution buffer: 5% NFDM/TBST.



NASP Antibody (N-term) (Cat. #AP4911a) flow cytometric analysis of HL-60 cells (right histogram) compared to a negative control cell (left histogram). FITC-conjugated goat-anti-rabbit secondary antibodies were used for the analysis.

#### **NASP Antibody (N-term) - Background**

NASP encodes a H1 histone binding protein that is involved in transporting histones into the nucleus of dividing cells. Multiple isoforms are encoded by transcript variants of this gene. The somatic form is expressed in all mitotic cells, is localized to the nucleus, and is coupled to the cell cycle. The testicular form is expressed in embryonic tissues, tumor cells, and the testis. In male germ cells, this protein is localized to the cytoplasm of primary spermatocytes, the nucleus of spermatids, and the periacrosomal region of mature spermatozoa.

#### **NASP Antibody (N-term) - References**

Alekseev, O.M., et al. Reprod. Biol. Endocrinol. 7, 45 (2009)  
Wang, H., et al. Nucleic Acids Res. 36(18):5763-5772(2008)  
Sugiyama, N., et al. Mol. Cell Proteomics 6(6):1103-1109(2007)