

GTD2A Antibody (C-term)
Affinity Purified Rabbit Polyclonal Antibody (Pab)
Catalog # AP4949b**Specification**

GTD2A Antibody (C-term) - Product Information

| | |
|-------------------|------------------------|
| Application | WB, FC,E |
| Primary Accession | Q86UP8 |
| Other Accession | Q6EKJ0 |
| Reactivity | Human |
| Host | Rabbit |
| Clonality | Polyclonal |
| Isotype | Rabbit IgG |
| Calculated MW | 107168 |
| Antigen Region | 812-841 |

GTD2A Antibody (C-term) - Additional Information**Gene ID** 84163**Other Names**

General transcription factor II-I repeat domain-containing protein 2A, GTF2I repeat domain-containing protein 2A, Transcription factor GTF2IRD2-alpha, GTF2IRD2, GTF2IRD2A

Target/Specificity

This GTD2A antibody is generated from rabbits immunized with a KLH conjugated synthetic peptide between 812-841 amino acids from the C-terminal region of human GTD2A.

Dilution

WB~~1:1000
FC~~1:10~50

Format

Purified polyclonal antibody supplied in PBS with 0.09% (W/V) sodium azide. This antibody is purified through a protein A column, followed by peptide affinity purification.

Storage

Maintain refrigerated at 2-8°C for up to 2 weeks. For long term storage store at -20°C in small aliquots to prevent freeze-thaw cycles.

Precautions

GTD2A Antibody (C-term) is for research use only and not for use in diagnostic or therapeutic procedures.

GTD2A Antibody (C-term) - Protein Information**Name** GTF2IRD2

Synonyms GTF2IRD2A

Cellular Location

Nucleus.

Tissue Location

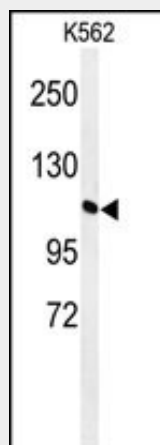
Ubiquitous..

GTD2A Antibody (C-term) - Protocols

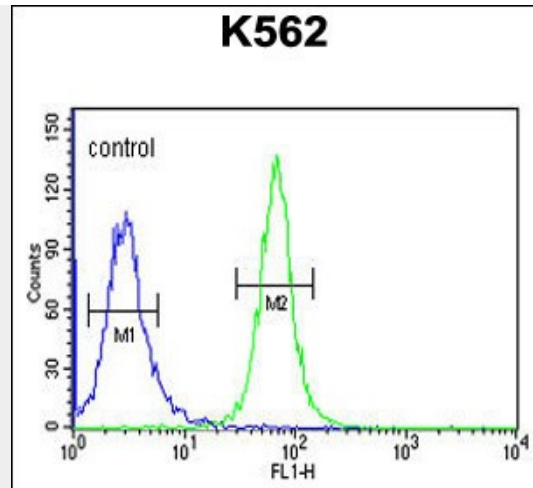
Provided below are standard protocols that you may find useful for product applications.

- [Western Blot](#)
- [Blocking Peptides](#)
- [Dot Blot](#)
- [Immunohistochemistry](#)
- [Immunofluorescence](#)
- [Immunoprecipitation](#)
- [Flow Cytometry](#)
- [Cell Culture](#)

GTD2A Antibody (C-term) - Images



Western blot analysis of GTD2A Antibody (C-term) (Cat. #AP4949b) in K562 cell line lysates (35ug/lane). GTD2A (arrow) was detected using the purified Pab.



GTD2A Antibody (C-term) (Cat. #AP4949b) flow cytometric analysis of K562 cells (right histogram) compared to a negative control cell (left histogram). FITC-conjugated goat-anti-rabbit secondary antibodies were used for the analysis.

GTD2A Antibody (C-term) - Background

GTD2A is unusual in that its coding sequence is mostly derived from Charlie8 repeat elements. However, there is mRNA and EST evidence to suggest that this gene is transcribed, and the encoded protein has a homolog in mouse, with which it shares 78% sequence identity. The exact function of this gene product is not known. It is inferred to be a transcription factor based on the presence of GTF2I-like repeats (containing helix-loop-helix motifs), also found in other proteins such as GTF2IRD1 and GTF2I. These three genes are clustered together on chr 7q11.23.

GTD2A Antibody (C-term) - References

Hinsley, T.A., et al. Protein Sci. 13(10):2588-2599(2004)
 Makeyev, A.V., et al. Proc. Natl. Acad. Sci. U.S.A. 101(30):11052-11057(2004)
 Tipney, H.J., et al. Eur. J. Hum. Genet. 12(7):551-560(2004)