

PTPLB Antibody (C-term)
Affinity Purified Rabbit Polyclonal Antibody (Pab)
Catalog # AP4975b

Specification

PTPLB Antibody (C-term) - Product Information

Application	WB, IHC-P, FC,E
Primary Accession	Q6Y1H2
Other Accession	Q2KIP8 , NP_940684
Reactivity	Human
Predicted	Bovine
Host	Rabbit
Clonality	Polyclonal
Isotype	Rabbit IgG
Calculated MW	28368
Antigen Region	226-254

PTPLB Antibody (C-term) - Additional Information

Gene ID 201562

Other Names

Very-long-chain (3R)-3-hydroxyacyl-CoA dehydratase 2, 3-hydroxyacyl-CoA dehydratase 2, HACD2, Protein-tyrosine phosphatase-like member B, PTPLB, HACD2

Target/Specificity

This PTPLB antibody is generated from rabbits immunized with a KLH conjugated synthetic peptide between 226-254 amino acids from the C-terminal region of human PTPLB.

Dilution

WB~~1:1000
IHC-P~~1:50~100
FC~~1:10~50

Format

Purified polyclonal antibody supplied in PBS with 0.09% (W/V) sodium azide. This antibody is purified through a protein A column, followed by peptide affinity purification.

Storage

Maintain refrigerated at 2-8°C for up to 2 weeks. For long term storage store at -20°C in small aliquots to prevent freeze-thaw cycles.

Precautions

PTPLB Antibody (C-term) is for research use only and not for use in diagnostic or therapeutic procedures.

PTPLB Antibody (C-term) - Protein Information

Name HACD2 {ECO:0000303|PubMed:18554506, ECO:0000312|HGNC:HGNC:9640}

Function Catalyzes the third of the very long-chain fatty acids (VLCFA) elongation four-step cycle (condensation, reduction, dehydration, and reduction). This endoplasmic reticulum-elongation process is characterized by the addition of two carbons to the lipid chain through each cycle. This enzyme catalyzes the dehydration of the 3-hydroxyacyl-CoA intermediate into trans-2,3-enoyl-CoA, within each cycle of elongation. Therefore, it participates in the production of various VLCFAs involved in multiple biological processes as precursors of membrane lipids and lipid mediators.

Cellular Location

Endoplasmic reticulum membrane; Multi-pass membrane protein

Tissue Location

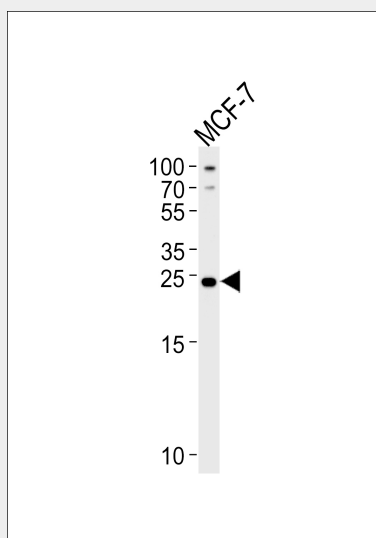
Highly expressed in testis, spleen, prostate, colon and heart, followed by moderate expression in thymus, ovary, small intestine, peripheral blood leukocytes, liver, skeletal muscle and pancreas. Weakly detected in kidney, placenta, brain and lung

PTPLB Antibody (C-term) - Protocols

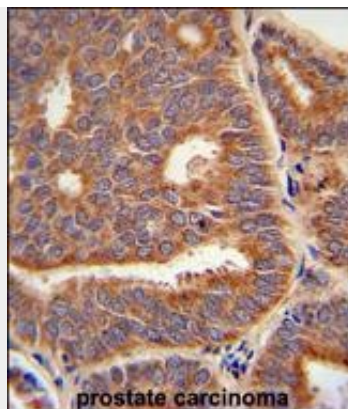
Provided below are standard protocols that you may find useful for product applications.

- [Western Blot](#)
- [Blocking Peptides](#)
- [Dot Blot](#)
- [Immunohistochemistry](#)
- [Immunofluorescence](#)
- [Immunoprecipitation](#)
- [Flow Cytometry](#)
- [Cell Culture](#)

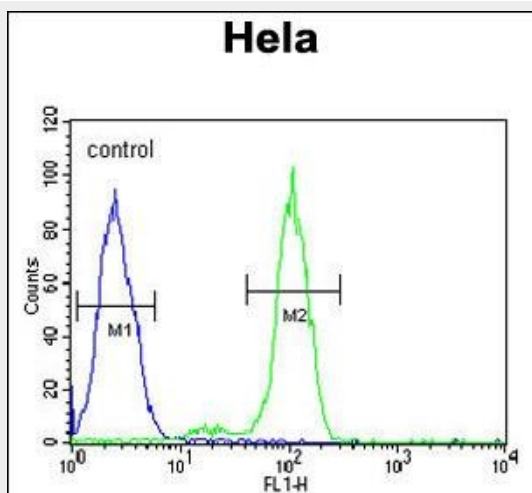
PTPLB Antibody (C-term) - Images



Western blot analysis of lysate from MCF-7 cell line, using PTPLB Antibody (C-term)(Cat. #AP4975b). AP4975b was diluted at 1:1000 at each lane. A goat anti-rabbit IgG H&L(HRP) at 1:5000 dilution was used as the secondary antibody. Lysate at 35ug per lane.



PTPLB Antibody (C-term) (Cat. #AP4975b) immunohistochemistry analysis in formalin fixed and paraffin embedded human prostate carcinoma followed by peroxidase conjugation of the secondary antibody and DAB staining. This data demonstrates the use of the PTPLB Antibody (C-term) for immunohistochemistry. Clinical relevance has not been evaluated.



PTPLB Antibody (C-term) (Cat. #AP4975b) flow cytometric analysis of Hela cells (right histogram) compared to a negative control cell (left histogram). FITC-conjugated goat-anti-rabbit secondary antibodies were used for the analysis.

PTPLB Antibody (C-term) - Background

PTPLB is probable anti-phosphatase.

PTPLB Antibody (C-term) - References

Wang, B., et al. Mol. Cell. Biol. 24(7):2767-2778(2004)