

**ASM3A Antibody (C-term)**  
**Affinity Purified Rabbit Polyclonal Antibody (Pab)**  
**Catalog # AP4977b****Specification**

---

**ASM3A Antibody (C-term) - Product Information**

Application	WB, IHC-P, FC,E
Primary Accession	<a href="#">O92484</a>
Other Accession	<a href="#">O3ZC91</a> , <a href="#">NP_006705</a>
Reactivity	Human
Predicted	Bovine
Host	Rabbit
Clonality	Polyclonal
Isotype	Rabbit IgG
Calculated MW	51260
Antigen Region	321-349

**ASM3A Antibody (C-term) - Additional Information****Gene ID** 10924**Other Names**

Acid sphingomyelinase-like phosphodiesterase 3a, ASM-like phosphodiesterase 3a, 314-, SMPDL3A, ASML3A

**Target/Specificity**

This ASM3A antibody is generated from rabbits immunized with a KLH conjugated synthetic peptide between 321-349 amino acids from the C-terminal region of human ASM3A.

**Dilution**WB~~1:1000  
IHC-P~~1:50~100  
FC~~1:10~50**Format**

Purified polyclonal antibody supplied in PBS with 0.09% (W/V) sodium azide. This antibody is purified through a protein A column, followed by peptide affinity purification.

**Storage**

Maintain refrigerated at 2-8°C for up to 2 weeks. For long term storage store at -20°C in small aliquots to prevent freeze-thaw cycles.

**Precautions**

ASM3A Antibody (C-term) is for research use only and not for use in diagnostic or therapeutic procedures.

**ASM3A Antibody (C-term) - Protein Information**

**Name** SMPDL3A {ECO:0000303|PubMed:25288789, ECO:0000312|HGNC:HGNC:17389}

**Function** Cyclic-nucleotide phosphodiesterase that acts as a negative regulator of innate immunity by mediating degradation of 2',3'-cGAMP, thereby inhibiting the cGAS-STING signaling (PubMed:[37890481](#)). Specifically linearizes 2',3'-cGAMP into 2'5'-bond pGpA and further hydrolyzes pGpA to produce GpA (PubMed:[37890481](#)). Also has in vitro nucleotide phosphodiesterase activity with nucleoside triphosphates, such as ATP (PubMed:[25288789](#), PubMed:[26783088](#)). Has in vitro activity with p-nitrophenyl-TMP (PubMed:[25288789](#)). Has lower activity with nucleoside diphosphates, and no activity with nucleoside monophosphates (PubMed:[25288789](#), PubMed:[28104755](#), PubMed:[26783088](#)). Has in vitro activity with CDP-choline, giving rise to CMP and phosphocholine. Has in vitro activity with CDP-ethanolamine (PubMed:[26783088](#)). Does not have sphingomyelin phosphodiesterase activity (PubMed:[25288789](#), PubMed:[26783088](#)).

**Cellular Location**

Secreted

**Tissue Location**

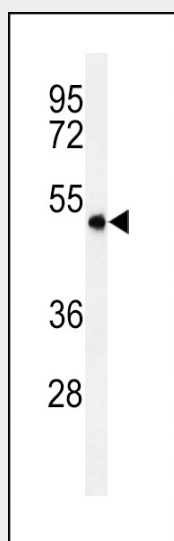
Detected in blood serum. Detected in macrophages (at protein level).

**ASM3A Antibody (C-term) - Protocols**

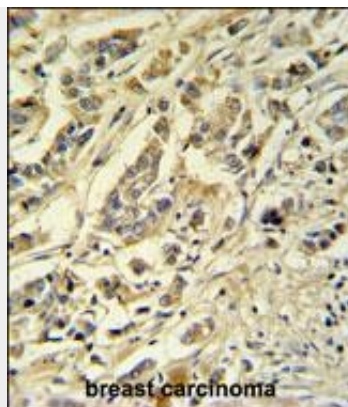
Provided below are standard protocols that you may find useful for product applications.

- [Western Blot](#)
- [Blocking Peptides](#)
- [Dot Blot](#)
- [Immunohistochemistry](#)
- [Immunofluorescence](#)
- [Immunoprecipitation](#)
- [Flow Cytometry](#)
- [Cell Culture](#)

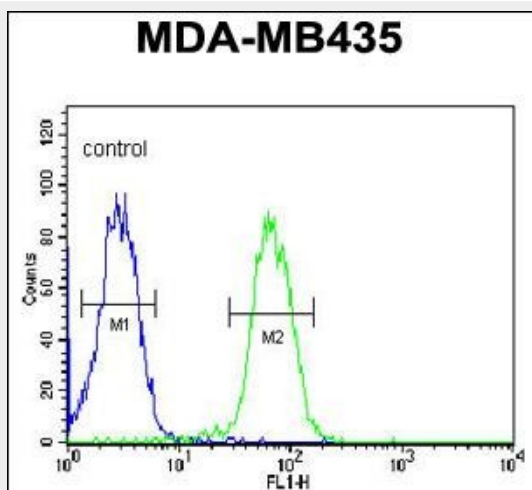
**ASM3A Antibody (C-term) - Images**



Western blot analysis of ASM3A Antibody (C-term) (Cat. #AP4977b) in MDA-MB435 cell line lysates (35ug/lane). ASM3A (arrow) was detected using the purified Pab.



ASM3A Antibody (C-term) (Cat. #AP4977b) IHC analysis in formalin fixed and paraffin embedded breast carcinoma followed by peroxidase conjugation of the secondary antibody and DAB staining. This data demonstrates the use of the ASM3A Antibody (C-term) for immunohistochemistry. Clinical relevance has not been evaluated.



ASM3A Antibody (C-term) (Cat. #AP4977b) flow cytometric analysis of MDA-MB435 cells (right histogram) compared to a negative control cell (left histogram). FITC-conjugated goat-anti-rabbit secondary antibodies were used for the analysis.

#### ASM3A Antibody (C-term) - References

Mungall, A.J., et al. Nature 425(6960):805-811(2003)  
Wright, K.O., et al. J. Urol. 168(6):2645-2649(2002)