

ATHL1 Antibody (C-term)
Affinity Purified Rabbit Polyclonal Antibody (Pab)
Catalog # AP4984b**Specification**

ATHL1 Antibody (C-term) - Product Information

Application	WB, IHC-P, FC,E
Primary Accession	Q32M88
Other Accession	NP_079368
Reactivity	Human
Host	Rabbit
Clonality	Polyclonal
Isotype	Rabbit IgG
Antigen Region	688-716

ATHL1 Antibody (C-term) - Additional Information**Gene ID** 80162**Other Names**

Acid trehalase-like protein 1, 321-, ATHL1

Target/Specificity

This ATHL1 antibody is generated from rabbits immunized with a KLH conjugated synthetic peptide between 688-716 amino acids from the C-terminal region of human ATHL1.

Dilution

WB~~1:1000
IHC-P~~1:50~100
FC~~1:10~50

Format

Purified polyclonal antibody supplied in PBS with 0.09% (W/V) sodium azide. This antibody is purified through a protein A column, followed by peptide affinity purification.

Storage

Maintain refrigerated at 2-8°C for up to 2 weeks. For long term storage store at -20°C in small aliquots to prevent freeze-thaw cycles.

Precautions

ATHL1 Antibody (C-term) is for research use only and not for use in diagnostic or therapeutic procedures.

ATHL1 Antibody (C-term) - Protein Information**Name** PGGHG {ECO:0000303|PubMed:26682924, ECO:0000312|HGNC:HGNC:26210}**Function** Catalyzes the hydrolysis of glucose from the disaccharide unit linked to hydroxylysine

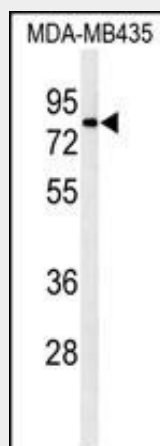
residues of collagen and collagen-like proteins.

ATHL1 Antibody (C-term) - Protocols

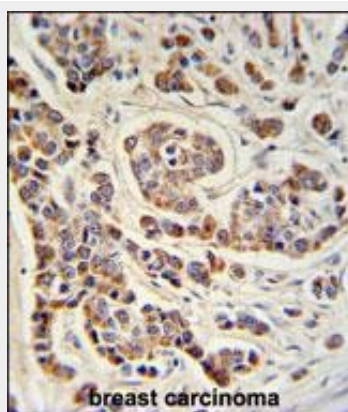
Provided below are standard protocols that you may find useful for product applications.

- [Western Blot](#)
- [Blocking Peptides](#)
- [Dot Blot](#)
- [Immunohistochemistry](#)
- [Immunofluorescence](#)
- [Immunoprecipitation](#)
- [Flow Cytometry](#)
- [Cell Culture](#)

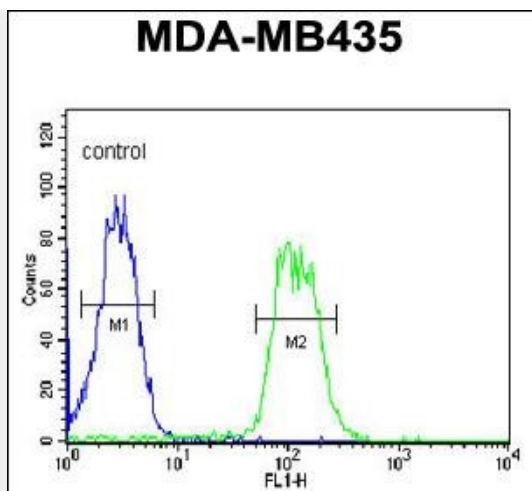
ATHL1 Antibody (C-term) - Images



Western blot analysis of ATHL1 Antibody (C-term) (Cat. #AP4984b) in MDA-MB435 cell line lysates (35ug/lane). ATHL1 (arrow) was detected using the purified Pab.



ATHL1 Antibody (C-term) (Cat. #AP4984b) IHC analysis in formalin fixed and paraffin embedded human breast carcinoma followed by peroxidase conjugation of the secondary antibody and DAB staining. This data demonstrates the use of the ATHL1 Antibody (C-term) for immunohistochemistry. Clinical relevance has not been evaluated.



ATHL1 Antibody (C-term) (Cat. #AP4984b) flow cytometric analysis of MDA-MB435 cells (right histogram) compared to a negative control cell (left histogram). FITC-conjugated goat-anti-rabbit secondary antibodies were used for the analysis.

ATHL1 Antibody (C-term) - References

Wheeler, H.E., et al. PLoS Genet. 5 (10), E1000685 (2009)

Oh, J.H., et al. Mamm. Genome 16(12):942-954(2005)

ATHL1 Antibody (C-term) - Citations

- [Glycosylation-related gene expression is linked to differentiation status in glioblastomas undifferentiated cells.](#)