

C10orf46 Antibody (C-term)
Affinity Purified Rabbit Polyclonal Antibody (Pab)
Catalog # AP4997b**Specification**

C10orf46 Antibody (C-term) - Product Information

Application	WB,E
Primary Accession	Q86Y37
Other Accession	Q5XI53 , Q8R0X2
Reactivity	Human, Mouse
Predicted	Rat
Host	Rabbit
Clonality	Polyclonal
Isotype	Rabbit IgG
Calculated MW	41064
Antigen Region	326-354

C10orf46 Antibody (C-term) - Additional Information**Gene ID** 143384**Other Names**

CDK2-associated and cullin domain-containing protein 1, Cdk-associated cullin1, CACUL1, C10orf46, CAC1

Target/Specificity

This C10orf46 antibody is generated from rabbits immunized with a KLH conjugated synthetic peptide between 326-354 amino acids from the C-terminal region of human C10orf46.

Dilution

WB~~1:1000

Format

Purified polyclonal antibody supplied in PBS with 0.09% (W/V) sodium azide. This antibody is purified through a protein A column, followed by peptide affinity purification.

Storage

Maintain refrigerated at 2-8°C for up to 2 weeks. For long term storage store at -20°C in small aliquots to prevent freeze-thaw cycles.

Precautions

C10orf46 Antibody (C-term) is for research use only and not for use in diagnostic or therapeutic procedures.

C10orf46 Antibody (C-term) - Protein Information**Name** CACUL1

Synonyms C10orf46, CAC1

Function Cell cycle associated protein capable of promoting cell proliferation through the activation of CDK2 at the G1/S phase transition.

Tissue Location

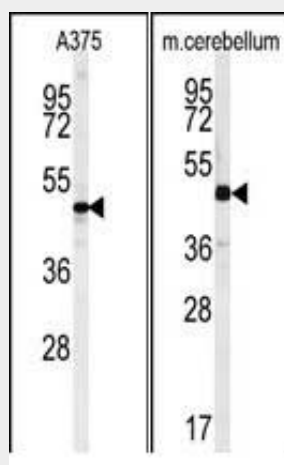
Ubiquitously expressed with highest expression in the mammary gland and large intestine. Highly expressed in cancer tissues and cancer cell lines. During cell cycle progression expression is high in G1/S, low in the middle of S phase, and increases again in S/G2 phase.

C10orf46 Antibody (C-term) - Protocols

Provided below are standard protocols that you may find useful for product applications.

- [Western Blot](#)
- [Blocking Peptides](#)
- [Dot Blot](#)
- [Immunohistochemistry](#)
- [Immunofluorescence](#)
- [Immunoprecipitation](#)
- [Flow Cytometry](#)
- [Cell Culture](#)

C10orf46 Antibody (C-term) - Images



(LEFT)Western blot analysis of C10orf46 Antibody (C-term)(Cat. #AP4997b) in A375 cell line lysates (35ug/lane).C10orf46 (arrow) was detected using the purified Pab. (RIGHT)Western blot analysis of C10orf46 Antibody (C-term) (Cat. #AP4997b) in mouse cerebellum tissue lysates (35ug/lane).C10orf46 (arrow) was detected using the purified Pab.

C10orf46 Antibody (C-term) - References

Kong, Y., et al. Cell Cycle 8(21):3544-3553(2009)
Deloukas, P., et al. Nature 429(6990):375-381(2004)