

**Claudin 1 Antibody (Ab-210)**  
**Purified Rabbit Polyclonal Antibody (Pab)**  
**Catalog # AP50007****Specification**

---

**Claudin 1 Antibody (Ab-210) - Product Information**

Application	WB
Primary Accession	<a href="#">O95832</a>
Reactivity	Human, Mouse, Rat
Host	Rabbit
Clonality	Polyclonal
Calculated MW	23 KDa
Antigen Region	189-211

**Claudin 1 Antibody (Ab-210) - Additional Information****Gene ID** 9076**Other Names**

Claudin-1, Senescence-associated epithelial membrane protein, CLDN1, CLD1, SEMP1

**Dilution**

WB~~ 1:1000

**Format**Rabbit IgG in phosphate buffered saline (without Mg<sup>2+</sup> and Ca<sup>2+</sup>), pH 7.4, 150mM NaCl, 0.09% (W/V) sodium azide and 50% glycerol.**Storage Conditions**

-20°C

**Claudin 1 Antibody (Ab-210) - Protein Information****Name** CLDN1**Synonyms** CLD1, SEMP1**Function**

Claudins function as major constituents of the tight junction complexes that regulate the permeability of epithelia. While some claudin family members play essential roles in the formation of impermeable barriers, others mediate the permeability to ions and small molecules. Often, several claudin family members are coexpressed and interact with each other, and this determines the overall permeability. CLDN1 is required to prevent the paracellular diffusion of small molecules through tight junctions in the epidermis and is required for the normal barrier function of the skin. Required for normal water homeostasis and to prevent excessive water loss through the skin, probably via an indirect effect on the expression levels of other proteins, since CLDN1 itself seems to be dispensable for water barrier formation in keratinocyte tight junctions (PubMed:<a href="http://www.uniprot.org/citations/23407391" target="\_blank">23407391</a>).

**Cellular Location**

Cell junction, tight junction. Cell membrane; Multi-pass membrane protein. Basolateral cell membrane Note=Associates with CD81 and the CLDN1-CD81 complex localizes to the basolateral cell membrane.

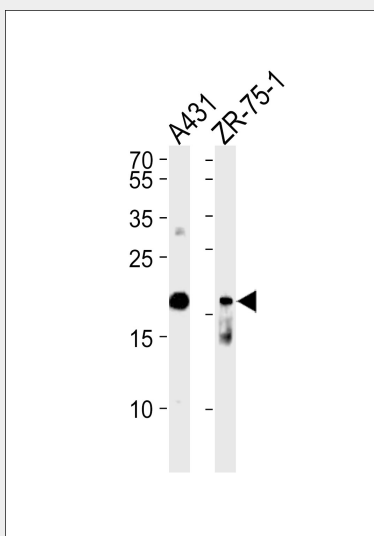
**Tissue Location**

Strongly expressed in liver and kidney. Expressed in heart, brain, spleen, lung and testis.

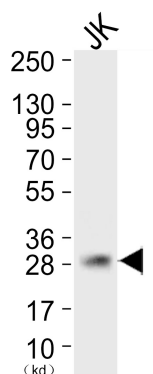
**Claudin 1 Antibody (Ab-210) - Protocols**

Provided below are standard protocols that you may find useful for product applications.

- [Western Blot](#)
- [Blocking Peptides](#)
- [Dot Blot](#)
- [Immunohistochemistry](#)
- [Immunofluorescence](#)
- [Immunoprecipitation](#)
- [Flow Cytometry](#)
- [Cell Culture](#)

**Claudin 1 Antibody (Ab-210) - Images**

Western blot analysis of lysates from A431,ZR-75-1 cell line (from left to right),using Claudin 1 Antibody (Ab-210) (B8316). B8316 was diluted at 1:1000 at each lane. A goat anti-rabbit IgG H&L(HRP) at 1:5000 dilution was used as the secondary antibody.Lysates at 35ug per lane.



Western blot analysis of extracts from JK cells, using Claudin 1 (Ab-210) Antibody. The lane on the left is treated with synthesized peptide.

### **Claudin 1 Antibody (Ab-210) - Background**

Plays a major role in tight junction-specific obliteration of the intercellular space, through calcium-independent cell-adhesion activity (By similarity). Acts as a co- receptor for HCV entry into hepatic cells.

### **Claudin 1 Antibody (Ab-210) - References**

Swissel K.L.,et al.Gene 226:285-295(1999).  
Mitic L.M.,et al.Submitted (DEC-1998) to the EMBL/GenBank/DDBJ databases.  
Halford S.,et al.Cytogenet. Cell Genet. 88:217-217(2000).  
Kraemer F.,et al.Hum. Genet. 107:249-256(2000).  
Clark H.F.,et al.Genome Res. 13:2265-2270(2003).