

Prostate Apoptosis Response protein-4 Antibody
Purified Rabbit Polyclonal Antibody (Pab)
Catalog # AP50009**Specification**

Prostate Apoptosis Response protein-4 Antibody - Product Information

Application	WB, IHC
Primary Accession	Q96IZ0
Reactivity	Human, Mouse, Rat
Host	Rabbit
Clonality	Polyclonal
Calculated MW	37 KDa
Antigen Region	310-338

Prostate Apoptosis Response protein-4 Antibody - Additional Information**Gene ID** 5074**Other Names**

PRKC apoptosis WT1 regulator protein, Prostate apoptosis response 4 protein, Par-4, PAWR, PAR4

Dilution

WB~~ 1:1000

IHC~~1:50-1:100

FormatRabbit IgG in phosphate buffered saline (without Mg²⁺ and Ca²⁺), pH 7.4, 150mM NaCl, 0.09% (W/V) sodium azide and 50% glycerol.**Storage Conditions**

-20°C

Prostate Apoptosis Response protein-4 Antibody - Protein Information**Name** PAWR**Synonyms** PAR4**Function**

Pro-apoptotic protein capable of selectively inducing apoptosis in cancer cells, sensitizing the cells to diverse apoptotic stimuli and causing regression of tumors in animal models. Induces apoptosis in certain cancer cells by activation of the Fas prodeath pathway and coparallel inhibition of NF-kappa-B transcriptional activity. Inhibits the transcriptional activation and augments the transcriptional repression mediated by WT1. Down-regulates the anti- apoptotic protein BCL2 via its interaction with WT1. Seems also to be a transcriptional repressor by itself. May be directly involved in regulating the amyloid precursor protein (APP) cleavage activity of BACE1.

Cellular Location

Cytoplasm. Nucleus. Note=Mainly cytoplasmic in absence of apoptosis signal and in normal cells. Nuclear in most cancer cell lines. Nuclear entry seems to be essential but not sufficient for apoptosis (By similarity). Nuclear localization includes nucleoplasm and PML nuclear bodies.

Tissue Location

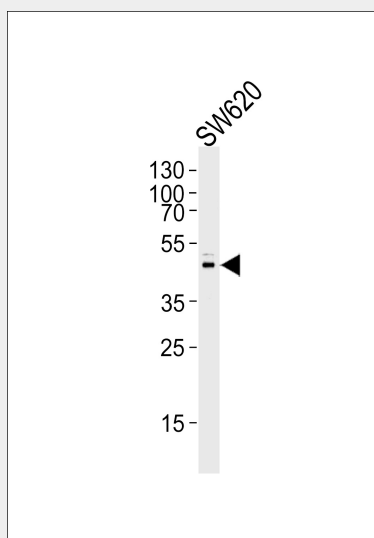
Widely expressed. Expression is elevated in various neurodegenerative diseases such as amyotrophic lateral sclerosis, Alzheimer, Parkinson and Huntington diseases and stroke. Down-regulated in several cancers.

Prostate Apoptosis Response protein-4 Antibody - Protocols

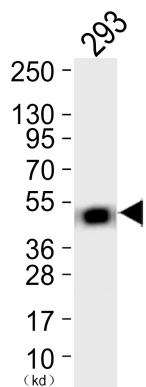
Provided below are standard protocols that you may find useful for product applications.

- [Western Blot](#)
- [Blocking Peptides](#)
- [Dot Blot](#)
- [Immunohistochemistry](#)
- [Immunofluorescence](#)
- [Immunoprecipitation](#)
- [Flow Cytometry](#)
- [Cell Culture](#)

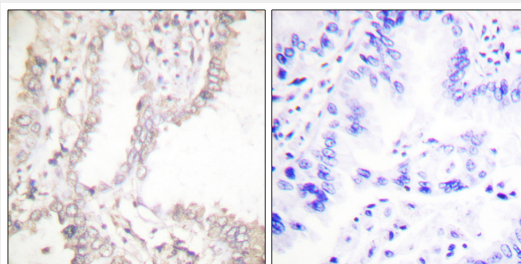
Prostate Apoptosis Response protein-4 Antibody - Images



Western blot analysis of lysate from SW620 cell line, using Prostate Apoptosis Response protein-4 Antibody (C0309). C0309 was diluted at 1:1000. A goat anti-rabbit IgG H&L (HRP) at 1:5000 dilution was used as the secondary antibody. Lysate at 35ug.



Western blot analysis of extracts from 293 cells. The lane on the left is treated with synthesized peptide.



Immunohistochemical analysis of paraffin-embedded human lung carcinoma tissue using Prostate Apoptosis Response Protein-4 antibody.

Prostate Apoptosis Response protein-4 Antibody - Background

Pro-apoptotic protein capable of selectively inducing apoptosis in cancer cells, sensitizing the cells to diverse apoptotic stimuli and causing regression of tumors in animal models. Induces apoptosis in certain cancer cells by activation of the Fas prodeath pathway and coparallel inhibition of NF-kappa-B transcriptional activity. Inhibits the transcriptional activation and augments the transcriptional repression mediated by WT1. Down-regulates the anti-apoptotic protein BCL2 via its interaction with WT1. Seems also to be a transcriptional repressor by itself. May be directly involved in regulating the amyloid precursor protein (APP) cleavage activity of BACE1.

Prostate Apoptosis Response protein-4 Antibody - References

Johnstone R.W., et al. Mol. Cell. Biol. 16:6945-6956(1996).
Ebert L., et al. Submitted (JUN-2004) to the EMBL/GenBank/DDBJ databases.
Hsu S.-C., et al. Gene 295:109-116(2002).
Chakraborty M., et al. Cancer Res. 61:7255-7263(2001).
Chang S., et al. FEBS Lett. 510:57-61(2002).