

HS1 Antibody (Ab-397)
Purified Rabbit Polyclonal Antibody (Pab)
Catalog # AP50022**Specification**

HS1 Antibody (Ab-397) - Product Information

Application	WB
Primary Accession	P14317
Reactivity	Human
Host	Rabbit
Clonality	Polyclonal
Calculated MW	54 KDa
Antigen Region	380-402

HS1 Antibody (Ab-397) - Additional Information**Gene ID** 3059**Other Names**

Hematopoietic lineage cell-specific protein, Hematopoietic cell-specific LYN substrate 1, LckBP1, p75, HCLS1, HS1

Dilution

WB~~ 1:1000

FormatRabbit IgG in phosphate buffered saline (without Mg²⁺ and Ca²⁺), pH 7.4, 150mM NaCl, 0.09% (W/V) sodium azide and 50% glycerol.**Storage Conditions**

-20°C

HS1 Antibody (Ab-397) - Protein Information**Name** HCLS1**Synonyms** HS1**Function**

Substrate of the antigen receptor-coupled tyrosine kinase. Plays a role in antigen receptor signaling for both clonal expansion and deletion in lymphoid cells. May also be involved in the regulation of gene expression.

Cellular Location

Membrane; Peripheral membrane protein. Cytoplasm. Mitochondrion

Tissue Location

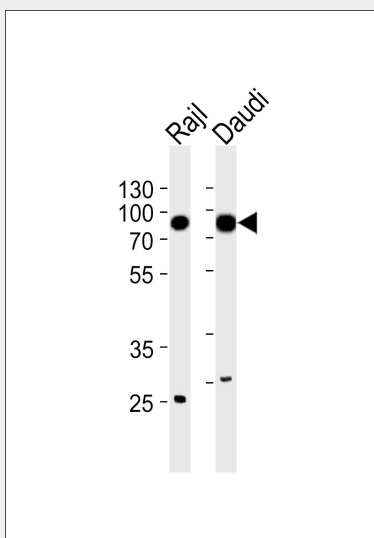
Expressed only in tissues and cells of hematopoietic origin

HS1 Antibody (Ab-397) - Protocols

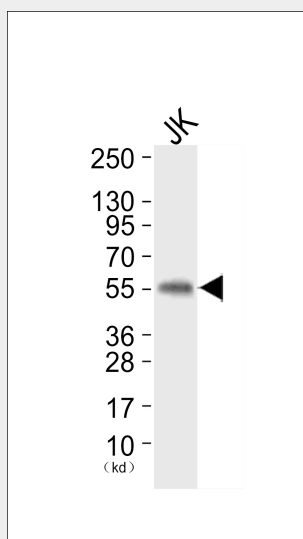
Provided below are standard protocols that you may find useful for product applications.

- [Western Blot](#)
- [Blocking Peptides](#)
- [Dot Blot](#)
- [Immunohistochemistry](#)
- [Immunofluorescence](#)
- [Immunoprecipitation](#)
- [Flow Cytometry](#)
- [Cell Culture](#)

HS1 Antibody (Ab-397) - Images



Western blot analysis of lysates from Raji, Daudi cell line (from left to right), using HS1 Antibody (Ab-397) (B8462). B8462 was diluted at 1:1000 at each lane. A goat anti-rabbit IgG H&L (HRP) at 1:5000 dilution was used as the secondary antibody. Lysates at 35 µg per lane.



Western blot analysis of extracts from JK cells, using HS1 (Ab-397) Antibody. The lane on the left

is treated with synthesized peptide.

HS1 Antibody (Ab-397) - Background

Substrate of the antigen receptor-coupled tyrosine kinase. Plays a role in antigen receptor signaling for both clonal expansion and deletion in lymphoid cells. May also be involved in the regulation of gene expression.

HS1 Antibody (Ab-397) - References

Kitamura D.,et al.Nucleic Acids Res. 17:9367-9379(1989).
Kalnine N.,et al.Submitted (MAY-2003) to the EMBL/GenBank/DDBJ databases.
Ota T.,et al.Nat. Genet. 36:40-45(2004).
Ebert L.,et al.Submitted (JUN-2004) to the EMBL/GenBank/DDBJ databases.
Muzny D.M.,et al.Nature 440:1194-1198(2006).