

PTGDR Antibody
Purified Rabbit Polyclonal Antibody (Pab)
Catalog # AP50035**Specification**

PTGDR Antibody - Product Information

Application	IF, WB
Primary Accession	Q13258
Reactivity	Human
Host	Rabbit
Clonality	Polyclonal
Calculated MW	40 KDa
Antigen Region	285-316

PTGDR Antibody - Additional Information**Gene ID** 5729**Other Names**

Prostaglandin D2 receptor, PGD receptor, PGD2 receptor, Prostanoid DP receptor, PTGDR

Dilution

IF~~1:100

WB~~ 1:1000

FormatRabbit IgG in phosphate buffered saline (without Mg²⁺ and Ca²⁺), pH 7.4, 150mM NaCl, 0.09% (W/V) sodium azide and 50% glycerol.**Storage Conditions**

-20°C

PTGDR Antibody - Protein Information**Name** PTGDR**Function**

Receptor for prostaglandin D2 (PGD2). The activity of this receptor is mainly mediated by G(s) proteins that stimulate adenylate cyclase, resulting in an elevation of intracellular cAMP. A mobilization of calcium is also observed, but without formation of inositol 1,4,5-trisphosphate (By similarity). Involved in PLA2G3- dependent maturation of mast cells. PLA2G3 is secreted by immature mast cells and acts on nearby fibroblasts upstream to PTDGS to synthesize PGD2, which in turn promotes mast cell maturation and degranulation via PTGDR (By similarity).

Cellular Location

Cell membrane; Multi-pass membrane protein

Tissue Location

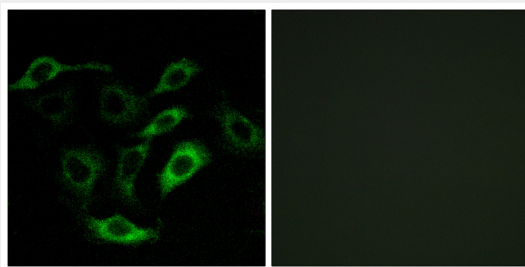
Expressed in retinal choroid, ciliary epithelium, longitudinal and circular ciliary muscles, iris, small intestine and platelet membranes.

PTGDR Antibody - Protocols

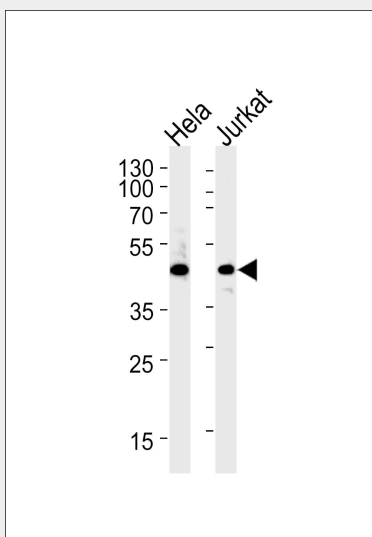
Provided below are standard protocols that you may find useful for product applications.

- [Western Blot](#)
- [Blocking Peptides](#)
- [Dot Blot](#)
- [Immunohistochemistry](#)
- [Immunofluorescence](#)
- [Immunoprecipitation](#)
- [Flow Cytometry](#)
- [Cell Culture](#)

PTGDR Antibody - Images



Immunofluorescence analysis of A549 cells, using PTGDR antibody.



Western blot analysis of lysates from HeLa, Jurkat cell line (from left to right), using PTGDR Antibody (G940). G940 was diluted at 1:1000 at each lane. A goat anti-rabbit IgG H&L (HRP) at 1:5000 dilution was used as the secondary antibody. Lysates at 35 µg per lane.

PTGDR Antibody - Background

Receptor for prostaglandin D₂ (PGD₂). The activity of this receptor is mainly mediated by G(s) proteins that stimulate adenylate cyclase, resulting in an elevation of intracellular cAMP. A

mobilization of calcium is also observed, but without formation of inositol 1,4,5-trisphosphate (By similarity).

PTGDR Antibody - References

Boie Y.,et al.J. Biol. Chem. 270:18910-18916(1995).
Martin A.L.,et al.Submitted (APR-2007) to the EMBL/GenBank/DDBJ databases.
Heilig R.,et al.Nature 421:601-607(2003).
Mural R.J.,et al.Submitted (SEP-2005) to the EMBL/GenBank/DDBJ databases.
Town M.H.,et al.Prostaglandins 25:13-28(1983).