

**Cytochrome P450 2A6 Antibody**  
**Purified Rabbit Polyclonal Antibody (Pab)**  
**Catalog # AP50056****Specification**

---

**Cytochrome P450 2A6 Antibody - Product Information**

Application	WB
Primary Accession	<a href="#">P11509</a>
Reactivity	Human
Host	Rabbit
Clonality	Polyclonal
Calculated MW	57 KDa
Antigen Region	15-43

**Cytochrome P450 2A6 Antibody - Additional Information****Gene ID** 1548**Other Names**

Cytochrome P450 2A6, 11413-, 4-cineole 2-exo-monooxygenase, CYP1A6, Coumarin 7-hydroxylase, Cytochrome P450 IIA3, Cytochrome P450(I), CYP2A6, CYP2A3

**Dilution**

WB~~ 1:500-1:1000

**Format**

Rabbit IgG in phosphate buffered saline (without Mg<sup>2+</sup> and Ca<sup>2+</sup>), pH 7.4, 150mM NaCl, 0.09% (W/V) sodium azide and 50% glycerol.

**Storage Conditions**

-20°C

**Cytochrome P450 2A6 Antibody - Protein Information****Name** CYP2A6**Synonyms** CYP2A3**Function**

Exhibits a high coumarin 7-hydroxylase activity. Can act in the hydroxylation of the anti-cancer drugs cyclophosphamide and ifosfamide. Competent in the metabolic activation of aflatoxin B1. Constitutes the major nicotine C-oxidase. Acts as a 1,4-cineole 2-exo- monooxygenase. Possesses low phenacetin O-deethylation activity.

**Cellular Location**

Endoplasmic reticulum membrane; Peripheral membrane protein. Microsome membrane; Peripheral membrane protein

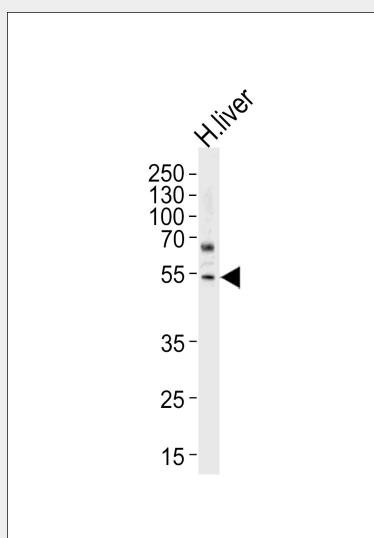
**Tissue Location**

Liver.

**Cytochrome P450 2A6 Antibody - Protocols**

Provided below are standard protocols that you may find useful for product applications.

- [Western Blot](#)
- [Blocking Peptides](#)
- [Dot Blot](#)
- [Immunohistochemistry](#)
- [Immunofluorescence](#)
- [Immunoprecipitation](#)
- [Flow Cytometry](#)
- [Cell Culture](#)

**Cytochrome P450 2A6 Antibody - Images**

Western blot analysis of lysates from H.liver cell line, using Cytochrome P450 2A6 Antibody (C12258). C12258 was diluted at 1:1000. A goat anti-rabbit IgG H&L (HRP) at 1:5000 dilution was used as the secondary antibody. Lysates at 35 µg.

**Cytochrome P450 2A6 Antibody - Background**

Exhibits a high coumarin 7-hydroxylase activity. Can act in the hydroxylation of the anti-cancer drugs cyclophosphamide and ifosfamide. Competent in the metabolic activation of aflatoxin B1. Constitutes the major nicotine C-oxidase. Acts as a 1,4-cineole 2-exo-monooxygenase. Possesses low phenacetin O-deethylation activity.

**Cytochrome P450 2A6 Antibody - References**

- Miles J.S., et al. Nucleic Acids Res. 17:2907-2917 (1989).  
Yamano S., et al. Nucleic Acids Res. 17:4888-4888 (1989).  
Yamano S., et al. Biochemistry 29:1322-1329 (1990).  
Zhuge J., et al. Submitted (SEP-1999) to the EMBL/GenBank/DDBJ databases.  
Ota T., et al. Nat. Genet. 36:40-45 (2004).